



E A S T T O W E R

Deansgate

S Q U A R E

A N E W L E V E L

DEANSGATE SQUARE

a new level

EAST
TOWER

Contents.

THE DEVELOPMENT	6 - 7
THE VISION	8 - 9
DEVELOPMENT MAP	10 - 11
MANCHESTER	
THE GUIDE	12 - 19
LOCATION	20 - 25
HEALTH & WELLNESS	
THE CLUB	26 - 39
LIFESTYLE & SERVICES	
THE TEA ROOM	40 - 41
THE SALON	42 - 43
THE ROOF GARDEN	44 - 47
THE CONCIERGE	48 - 49
THE GALLERY	50 - 53
THE SQUARE	54 - 55
THE APARTMENTS	
INTERIORS	56 - 61
VIEWS	62 - 63
SPECIFICATIONS	64 - 69
APARTMENT LOCATOR	70 - 72
FLOORPLANS	73 - 101
THE DEVELOPER	102 - 103

Reaching new heights.

Comprising 1,508 spacious apartments across four carefully designed towers, Deansgate Square is Manchester's premier new development. Marrying luxury living with unrivalled private on-site amenities, all in an iconic location at the heart of one of the world's best-known cities.

Every element has been carefully crafted, ensuring that every need is considered. From the outset, our team of designers have factored in all the key aspects for iconic modern living - and much more. Covering 22,000 ft² the Deansgate Square development has a level of amenity unmatched with anywhere else in the UK. Comprising a pool, gymnasium, sports hall, spa, lounge, business gallery and rooftop garden.

Deansgate Square takes city centre living in Manchester to a new level.

And with its enviable location in the heart of the city, the possibilities are endless.

Deansgate

S Q U A R E

Architect's Vision

DEANSGATE SQUARE COMPRISES A COLLECTION OF FOUR RESIDENTIAL TOWERS TOGETHER WITH A STANDALONE AMENITY BUILDING FOR RESIDENTS USE ONLY, 25,000 SQ FT OF COMMERCIAL SPACE AND SECURE UNDERGROUND PARKING.

THE TOWERS ARE EXPRESSED AS A COHESIVE SCULPTURAL GROUPING, SITUATED NEXT TO THE RIVER MEDLOCK AND AT THE GATEWAY TO THE CITY CENTRE. THEY ARE THE FIRST IN A SERIES OF DEVELOPMENTS THAT FORM THE WIDER GREAT JACKSON STREET MASTERPLAN VISION.



The architectural expression of the buildings is deliberately restrained and is repeated across all four towers, creating a cluster of strong, elegant silhouettes. Care has been taken to ensure that a refined and slender profile is introduced to the Manchester skyline.

The verticality of the towers has been emphasised through two subtle moves. Each face of each tower is indented creating a vertical crease which breaks down each surface into two narrower planes. Adjacent faces of the towers receive subtle contrasting colour tones, silver grey and anthracite, intended to pick out the crisp vertical lines of the four corners of each building.

The detailed design of the building façades comprises a uniform pattern of coloured, fritted and clear double glazed unitised panels, creating a dynamic animated façade which responds to shifting viewpoints and changing environmental conditions.

Ian Simpson
simpsonhaugh

The arrangement of the four towers has been carefully considered whereby the shadows cast by the towers move away from the public space created at their base by mid-afternoon. Essential to create an appealing public space.

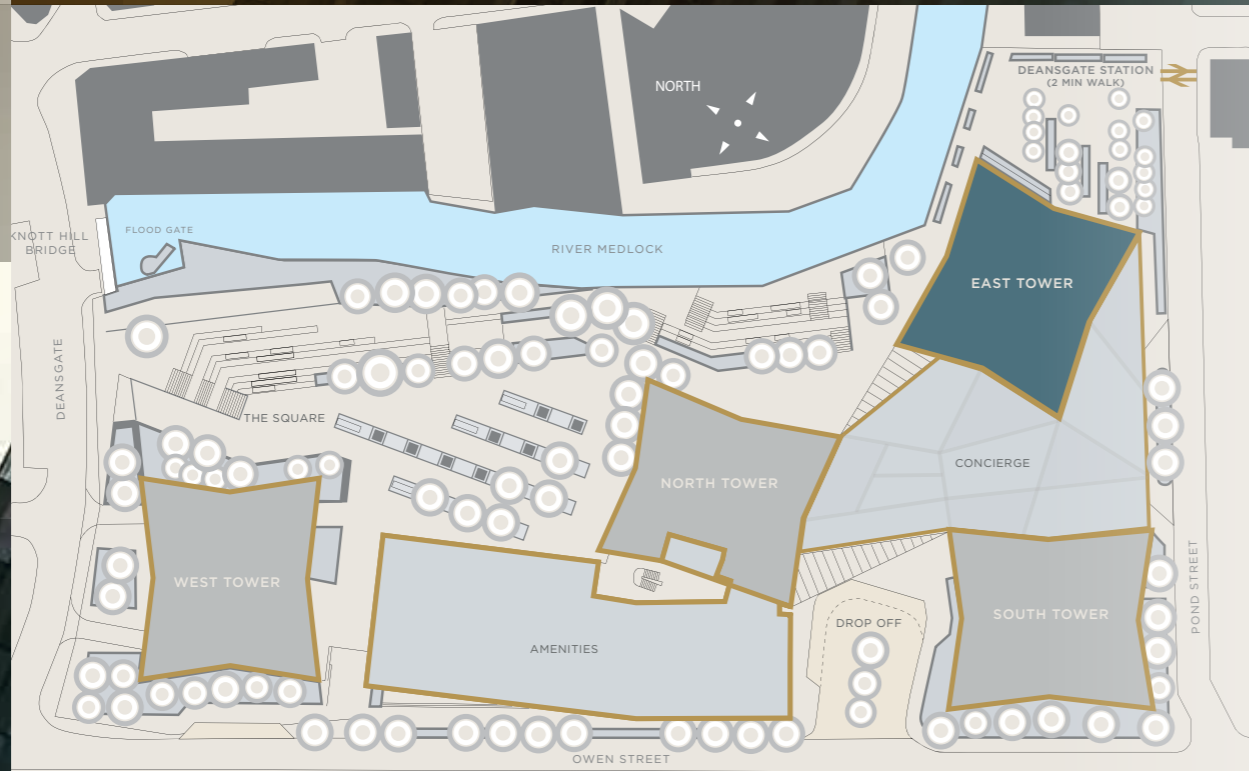
The development is situated adjacent to the River Medlock, with the river walk forming part of a terraced landscaped arrangement connecting the Plaza with the river edge. The terraces are arranged to relate directly to it, offering viewing opportunities both up and down river.

Deansgate Square includes significant new areas of landscaped space and public realm, creating a rich groundscape that dramatically improves the quality of both public and private environments to support the delivery of the wider Great Jackson Street Masterplan vision. The Square, accommodating food and retail units, is designed to be a flexible space to cater for varying size of events and will create a destination for the development and the wider city.

The East Tower

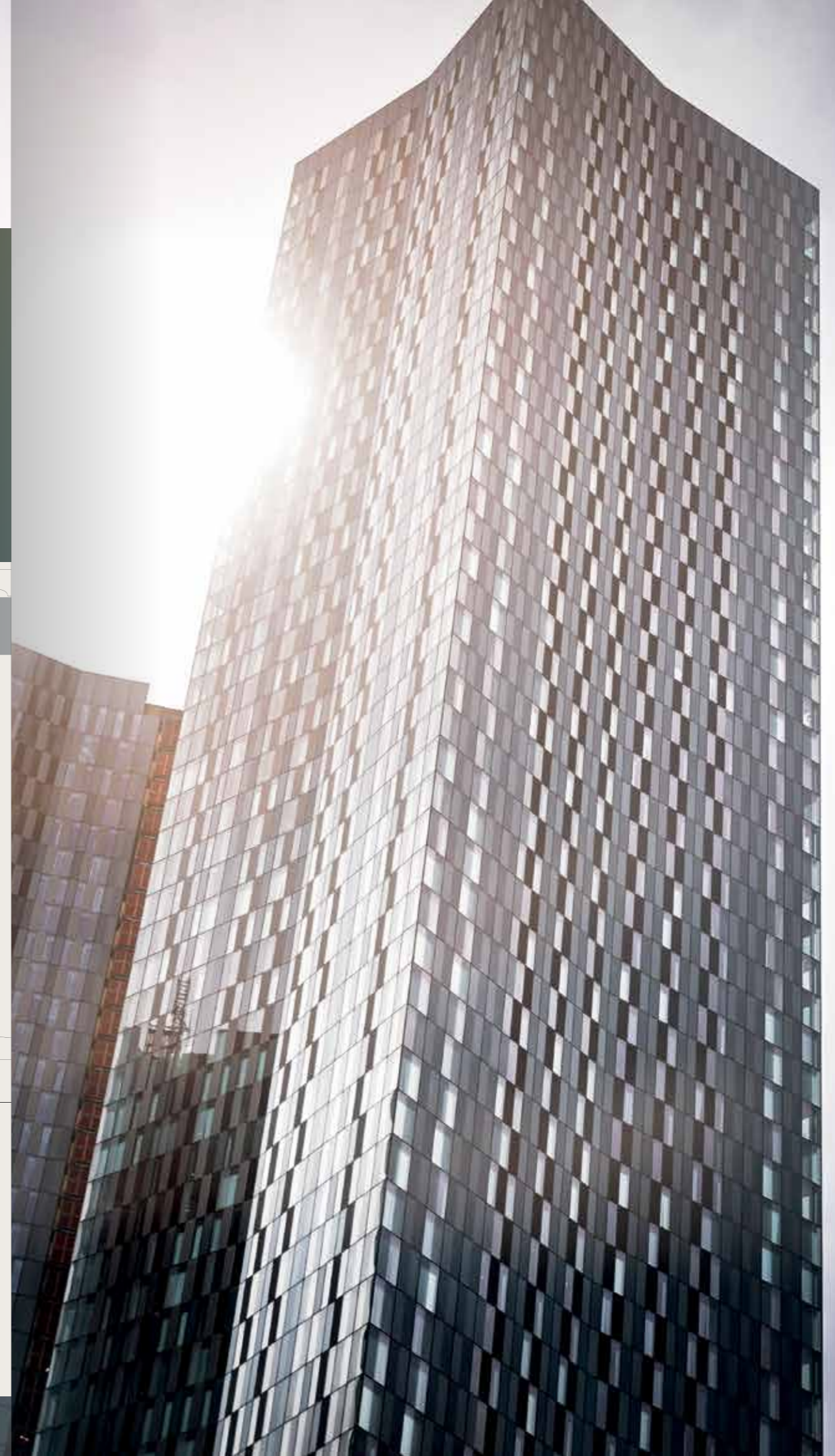
51 STOREYS 386 APARTMENTS

Not only is Deansgate Square perfectly placed to explore Manchester and beyond - it benefits from its own community hub. The Club can be reached in under a minute from each of the iconic towers, plus a range of retail options all located within the development's boundary.



SITE PLAN

- EAST TOWER 386 apartments
- SOUTH TOWER 496 apartments
- NORTH TOWER 276 apartments
- WEST TOWER 350 apartments



Endless possibilities. Countless stories.

At the foot of Deansgate, the central artery running through the heart of Manchester, Deansgate Square not only gives stunning views across this popular, ever-growing metropolis, but is also ideally situated for exploring the city and everything it has to offer.

Manchester. Living.

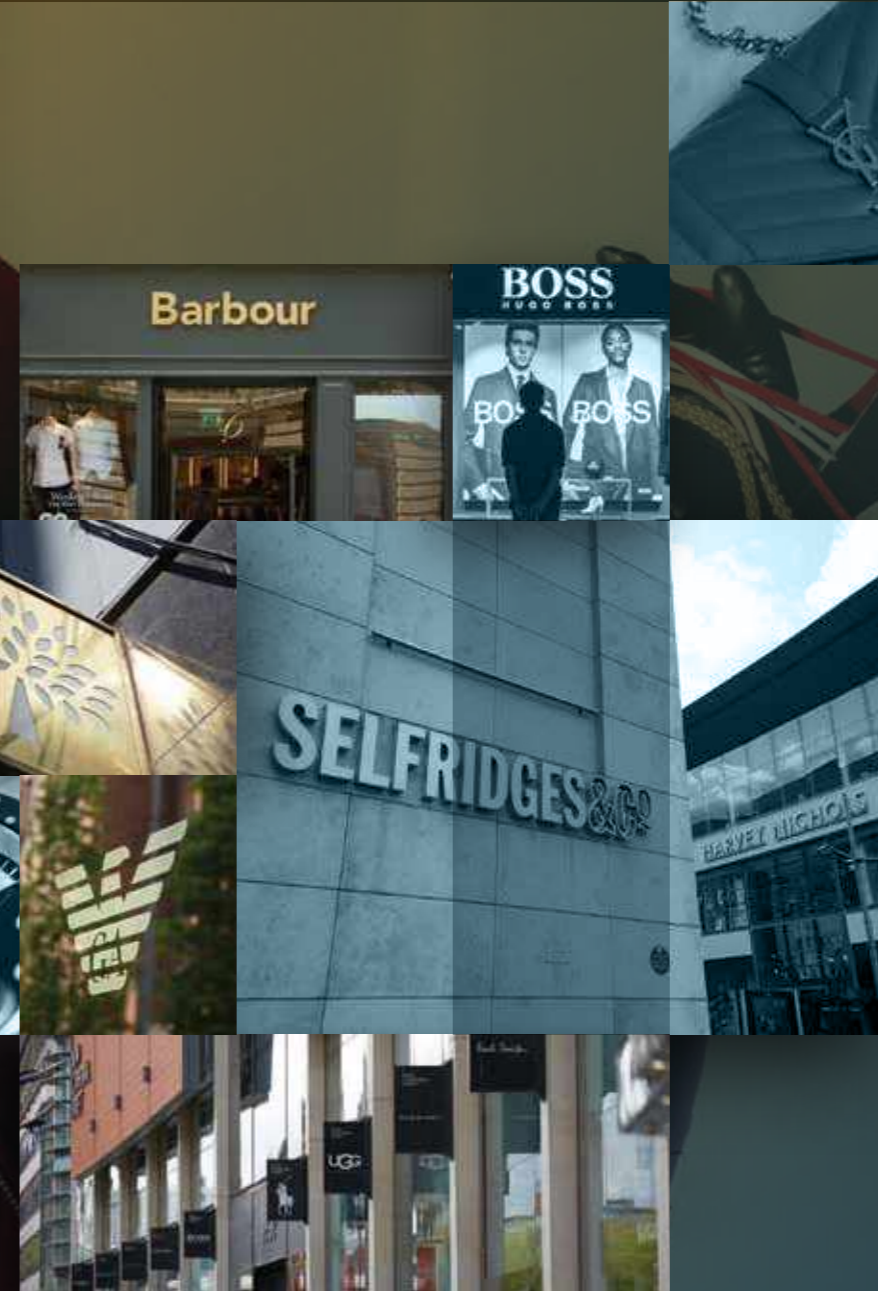
Tasty nights out.

Manchester has become well-known for its culinary culture. Home to an eclectic mix of eateries, the city offers everything from Michelin-starred high cuisine, through to the latest in hip street food pop-ups.



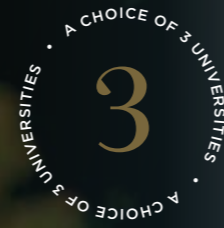
Shop. Chic.

With its very own style and swagger, Manchester offers a wide variety of sensational shopping for the fashion conscious. Whether you are looking for designer stores, the UK's favourite high-street retailers or artisan independents, there is something for everyone located on almost every street in the city.



Education.

Deansgate Square is more than just an impressive place to live, it offers many great opportunities for you and your family to learn and grow in one of the UK's, Europe's and the wider world's best education hubs.



Manchester offers a plethora of quality schools and world-leading higher education establishments that you and your family will be able to access as residents at Deansgate Square.

Ofsted ratings for both state primary and secondary schools in the region invariably range from 'Good' to 'Outstanding', with impressive pass rates and record numbers of students going onto further academic study.

Manchester city centre is also home to one of Europe's largest student populations across its 3 universities:

- Manchester University
 - Manchester Metropolitan University
 - The University of Salford
- plus
- Northern Ballet School
 - Royal Northern College of Music



TRAVELLING TIMES

UNIVERSITY OF MANCHESTER

🚶 20 mins 🚗 4 mins 🚲 8 mins

MANCHESTER METROPOLITAN UNIVERSITY

🚶 12 mins 🚗 4 mins 🚲 3 mins

UNIVERSITY OF SALFORD

🚶 32 mins 🚗 8 mins 🚲 12 mins

ROYAL NORTHERN COLLEGE OF MUSIC

🚶 19 mins 🚗 5 mins 🚲 7 mins

NORTHERN BALLET SCHOOL

🚶 13 mins 🚗 4 mins 🚲 4 mins



- 1 DUKES 92
- 2 CASTLEFIELD BOWL
- 3 THE KNOTT
- 4 ATLAS BAR
- 5 THE COMEDY STORE
- 6 REVOLUTION
- 7 LOLA LO
- 8 INDIAN TIFFIN ROOM
- 9 ODEON CINEMA
- 10 WOOD
- 11 GORILLA
- 12 CLOUD 23
- 13 IMPOSSIBLE
- 14 ALBERT'S SCHLOSS
- 15 BREWDOG
- 16 20 STORIES
- 17 THE IVY
- 18 TATTU
- 19 THE REFINERY
- 20 SAN CARLO

- BUSINESS DISTRICT
- PLACES OF INTEREST

Well connected.

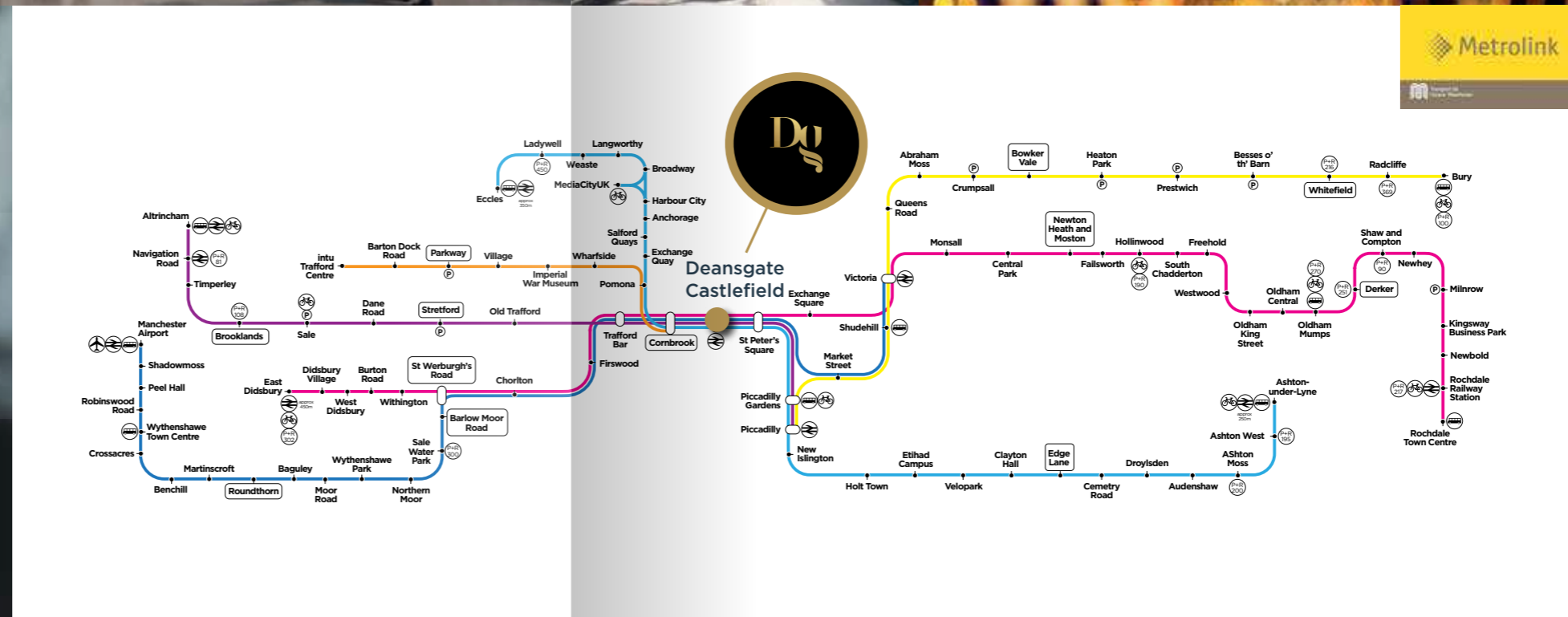
LOCAL TRANSPORT

Deansgate Square offers a wealth of nearby transport connections that can see you make the most of everything in the local area and further afield. Whether it's the city's tram network, bus routes or trains, you can easily access everything Manchester has to offer in terms of top venues, attractions and public spaces. In addition, the rest of the UK is also within touching distance courtesy of Manchester's three major train stations. Moreover, the upcoming HS2 rail network will offer journeys to the capital in 67 minutes*.

*HS2 data from HS2.org.uk

METROLINK

Deansgate Square is perfectly positioned for all the Metrolink lines as well as National Rail services.



Flying high.

Just a short train or car journey to the southwest of the city centre is Manchester Airport, which can connect you to over 200 worldwide destinations.



Hello to luxury.

THE CLUB

The Club has a level of amenity unmatched anywhere else in the UK, comprising:

- 20M SWIMMING POOL
- VITALITY POOL
- SAUNA
- STEAM ROOM
- SPA TREATMENT ROOMS (INCLUDING NAIL BAR)
- RESIDENTS' CHANGING FACILITIES
- 6000 ft² SPORTS HALL (TENNIS, 5-A-SIDE FOOTBALL, BASKETBALL)
- 4300 ft² GYMNASIUM
- 1130 ft² SPIN STUDIO
- 1100 ft² YOGA / AEROBIC STUDIO
- ROOFTOP GARDEN
- PRIVATE SALON (ABILITY TO HIRE FOR PRIVATE EVENTS)

THE POOL

An inspiring space cultivated using the most contemporary materials and equipment. The 20m swimming pool boasts luxuriously designed changing rooms, along with a sauna and steam room facility, vitality pool, 'experience shower' and is situated close to the spa treatment rooms in which residents can book massages, facials and more.

Health & Wellness.

Our health and wellness team includes everyone from personal trainers to sports rehabilitation specialists, ensuring The Club is accessible to all residents.



THE GYMNASIUM

The gymnasium situated over two floors, boasts state-of-the-art technology which allows residents to access a connective wellness experience via bespoke training programmes. Residents can benefit from regular live classes from qualified instructors as part of a curated daily timetable as well as booking personal 1-2-1 training sessions.



YOGA STUDIO

The yoga studio is a tranquil space, equipped with ambient circadian lighting and a virtual instructor, walking residents through their flow from a screen.



SPIN STUDIO

The spin studio provides the perfect environment to join like-minded members in a group indoor cycling class.

A state-of-the-art Wexer creates virtual digital fitness solutions with more than 1,000 fitness videos and exercises. Complete with a professional sound system and multi-coloured lighting, designed to enhance the user experience.



SPORTS HALL

A first for living in Manchester, with its bright pink floor, the 6,000 ft² sports hall is available for hire for a variety of different sports, including 5-a-side football, basketball and tennis.

The Club.

MEZZANINE FLOOR PLAN

- 1 YOGA/AEROBIC STUDIO
- 2 TREATMENT ROOM 1
- 3 TREATMENT ROOM 2
- 4 NAIL BAR
- 5 STAIRS TO ALL LEVELS
- 6 SPORTS HALL
- 7 TREATMENT ROOM RECEPTION
- 8 GYMNASIUM

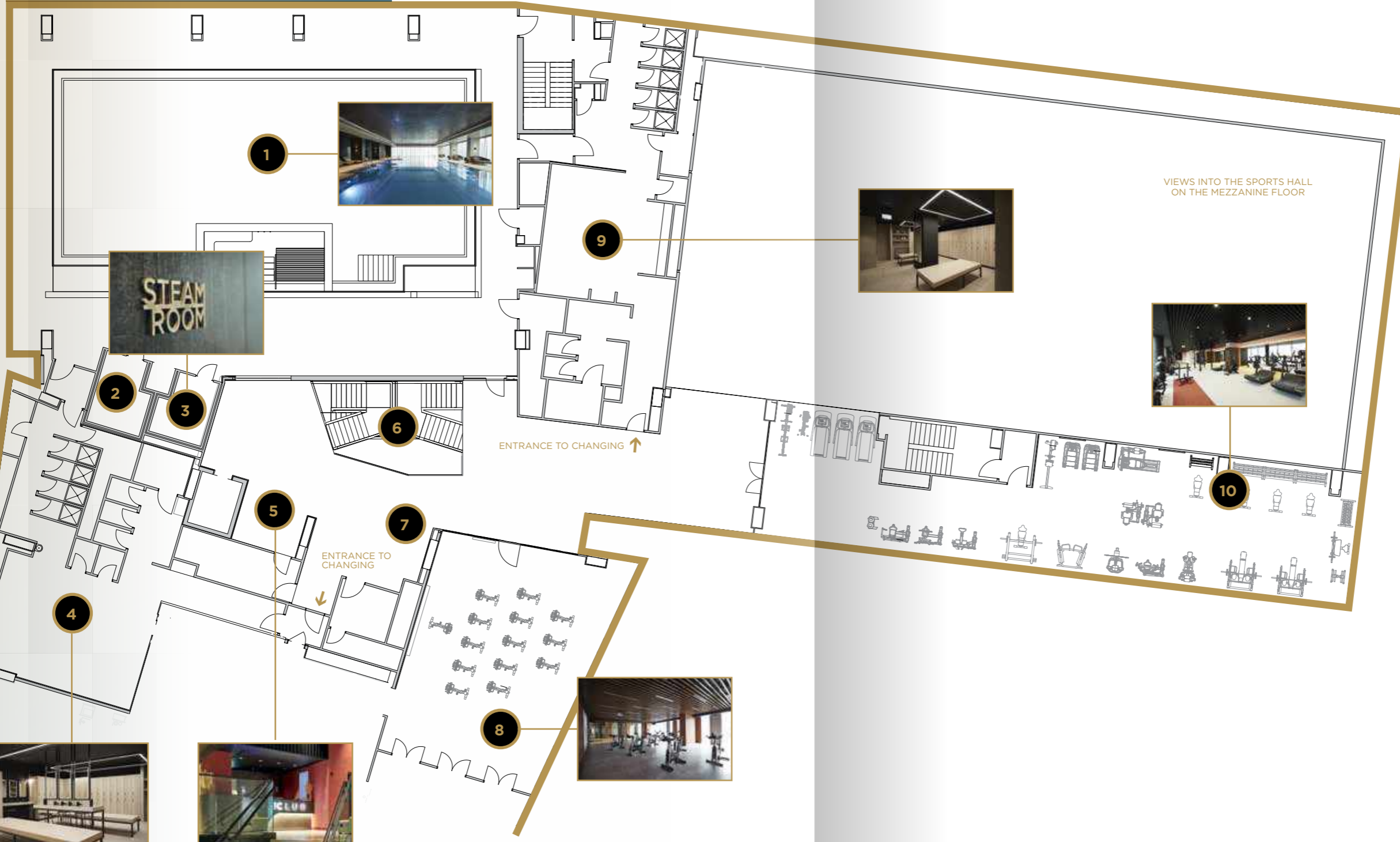


m

The Club.

FLOOR 1 PLAN

- 1 SWIMMING POOL
- 2 SAUNA
- 3 STEAM ROOM
- 4 FEMALE CHANGING
- 5 THE CLUB RECEPTION
- 6 STAIRS TO ALL LEVELS
- 7 LOUNGE AREA
- 8 SPIN STUDIO
- 9 MALE CHANGING
- 10 GYMNASIUM



Relax. Unwind.

THE TEA ROOM

From the sounds residents hear to the aromas they smell, careful consideration has been given to create a tranquil yet captivating space.

The Tea Room, eclectic and richly designed and with direct access onto the rooftop garden, offers a comfortable space for catching up with fellow residents and friends, or relaxing and reading the Sunday papers, with a subtle nod to that British classic, a cup of tea.

Dine. Enjoy.

THE SALON

Adjoining to the Tea Room is The Salon, a private dining room available for residents to hire out for entertaining with friends or business colleagues, with the option of hiring a private chef.



The great outdoors.

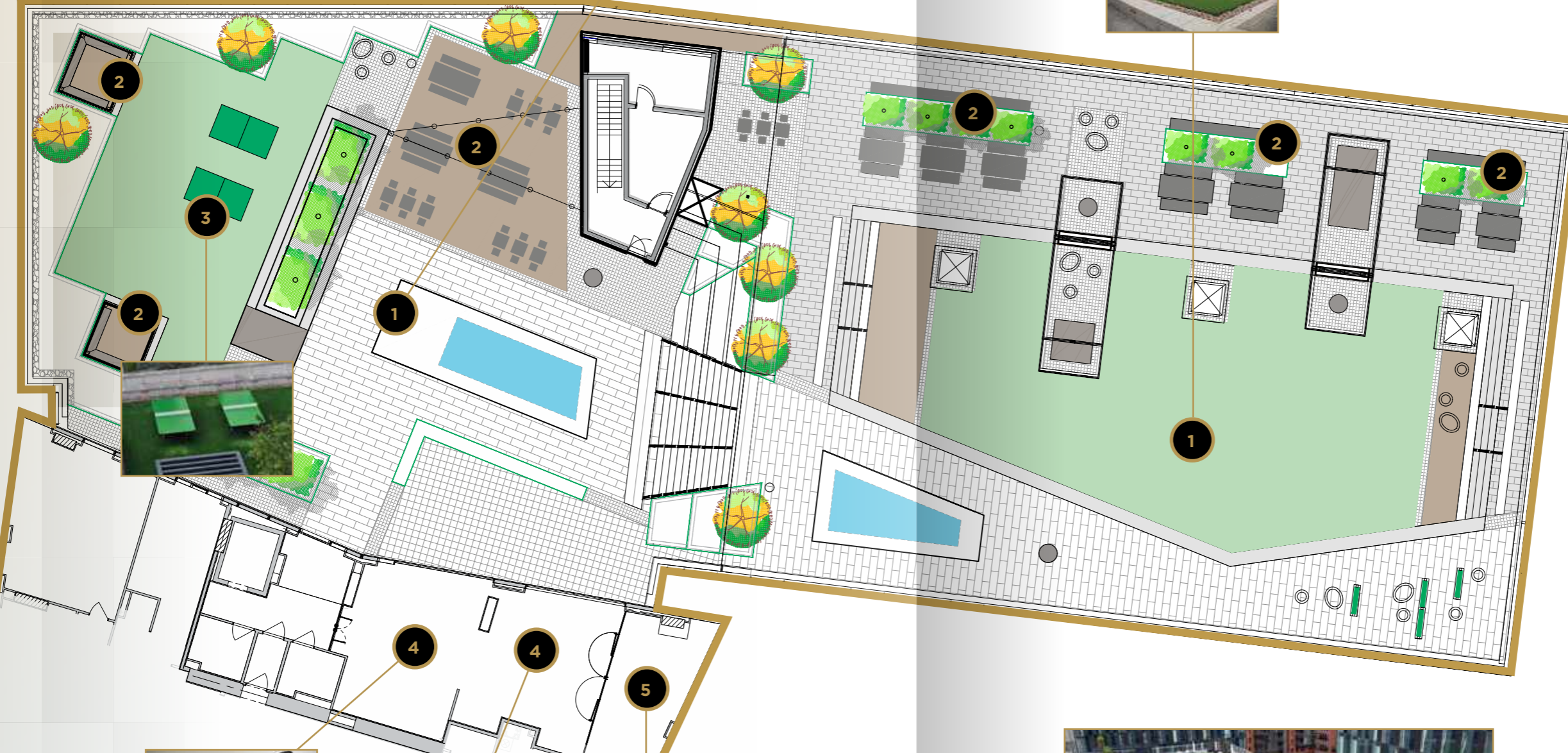
THE ROOFTOP GARDEN

Offering a place to relax outdoors, in beautifully landscaped luxury, the roof garden not only provides the perfect place to enjoy the outdoors but also affords great views across the city centre.

The Rooftop Garden.

FLOOR 3 PLAN

- 1 GARDEN
- 2 OUTDOOR SEATING
- 3 TABLE TENNIS
- 4 THE TEA ROOM
- 5 THE SALON



At your service.

THE CONCIERGE

The main concierge further adds to the opulence of the development. A huge skylight takes centre stage and provides a focal point for residents and guests alike. The materials used throughout the concierge areas have been carefully selected and lovingly crafted to provide a truly bespoke environment.



AVAILABLE 24/7



DEDICATED RESIDENTS' DROP OFF / PICK UP POINT



CENTRAL HUB



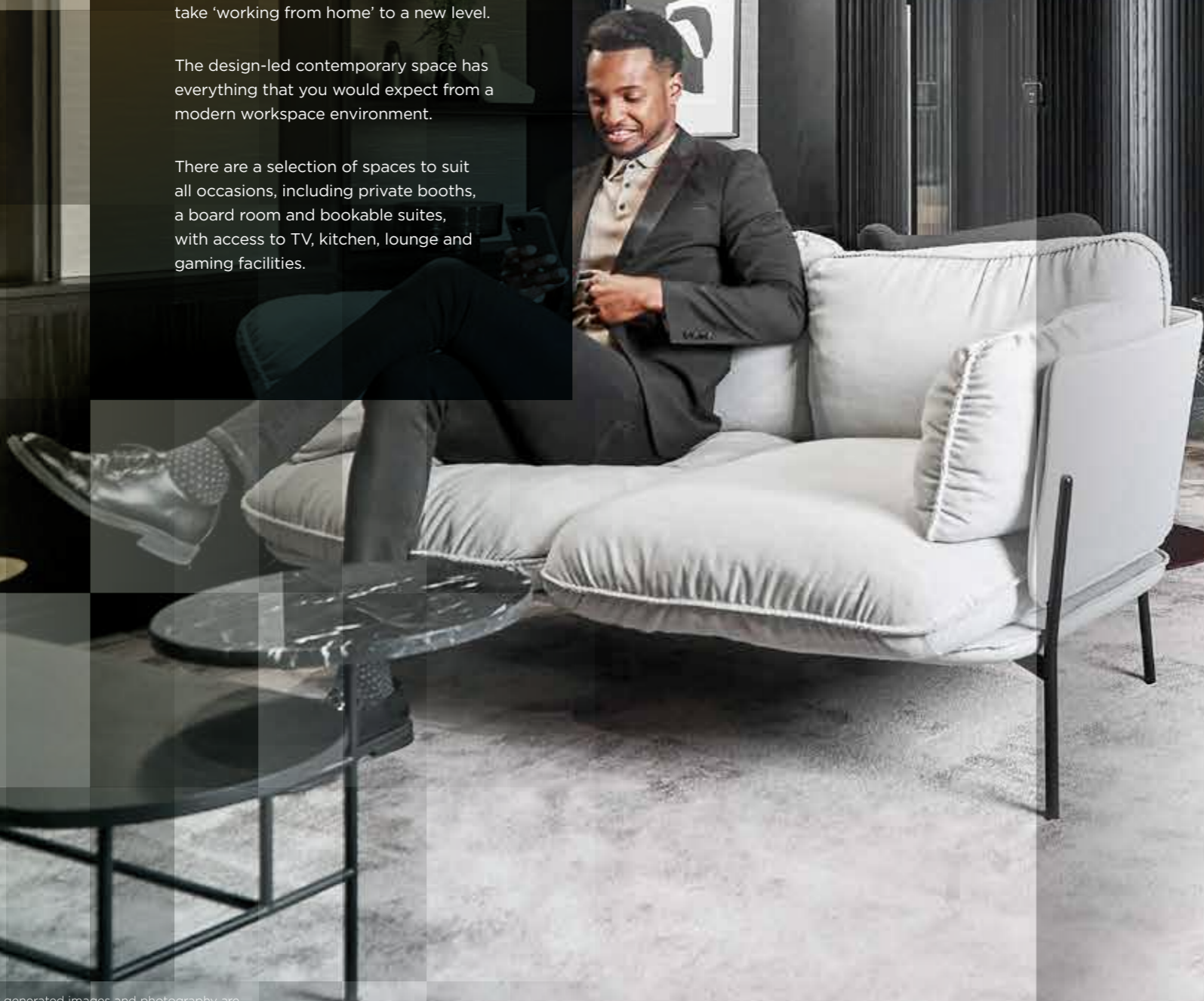
An office out of the office.

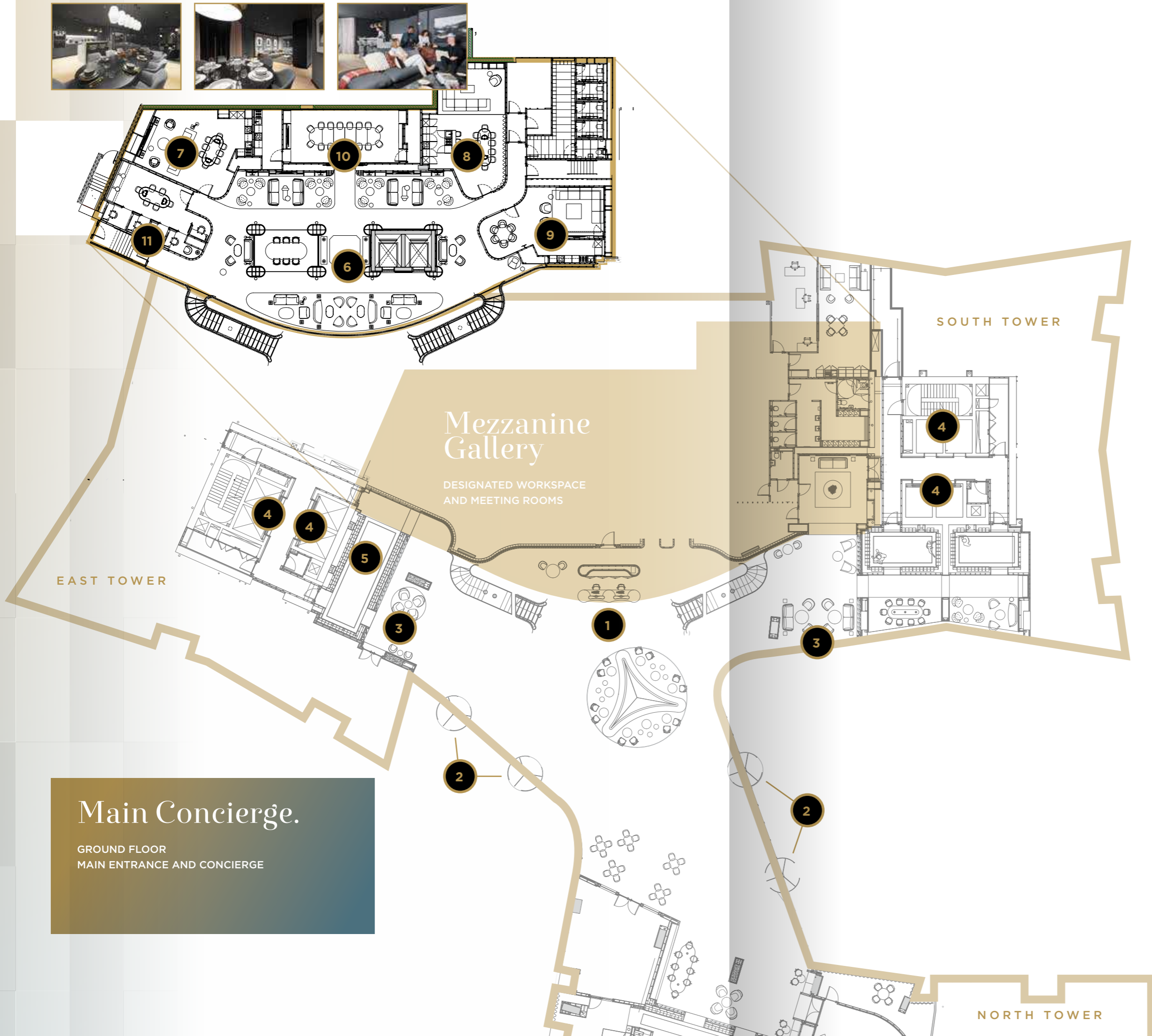
THE GALLERY

The business gallery, situated over the main concierge, offers a peaceful and professional environment to take 'working from home' to a new level.

The design-led contemporary space has everything that you would expect from a modern workspace environment.

There are a selection of spaces to suit all occasions, including private booths, a board room and bookable suites, with access to TV, kitchen, lounge and gaming facilities.





- 1 CONCIERGE
- 2 ENTRANCE X4
- 3 LOUNGE
- 4 LIFTS
- 5 MAIL BOXES
- 6 CO-WORKING SPACE
- 7 BOOKABLE SUITE NO.1
- 8 BOOKABLE SUITE NO.2
- 9 BOOKABLE SUITE NO.3
- 10 THE BOARDROOM
- 11 PRIVATE INDIVIDUAL BOOTHS

Main Concierge.
 GROUND FLOOR
 MAIN ENTRANCE AND CONCIERGE



Convenience on your doorstep.

THE SQUARE

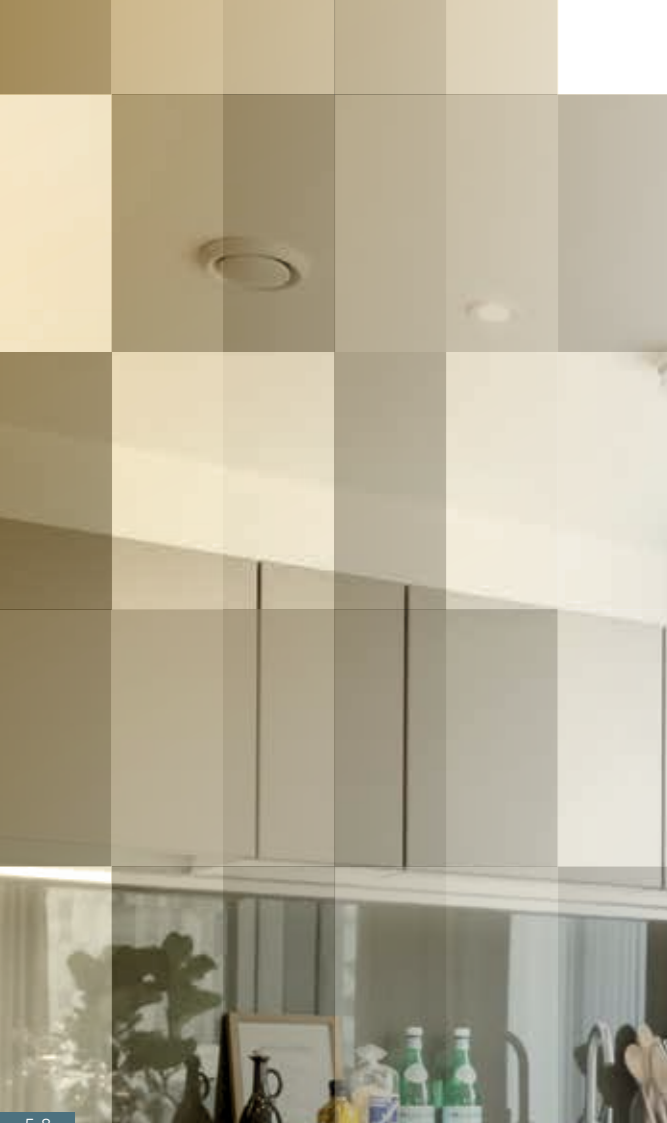
Retail spaces will contribute to the amenity provision across the development. A curatorial approach has been taken to select independent local operators to create a stimulating retail environment for residents to enjoy including a general store, bar, cafe and more.

The Square, which overlooks the River Medlock, part of the development, will also host events sealing it as new destination in Manchester.

Interiors.

APARTMENTS

Each carefully designed living space offers you unparalleled views across the city centre and beyond, with full height windows allowing you to relax and enjoy the view. Plus, with the latest soundproofing technology, you can be safe in the knowledge your luxury will be undisturbed.



LIVING

Featuring bespoke units, the modern kitchens also feature integrated appliances including: hob, oven, fridge-freezer, dishwasher and the all important wine cooler. Oak herringbone flooring adds to the overall aesthetic creating a luxurious and contemporary living space.

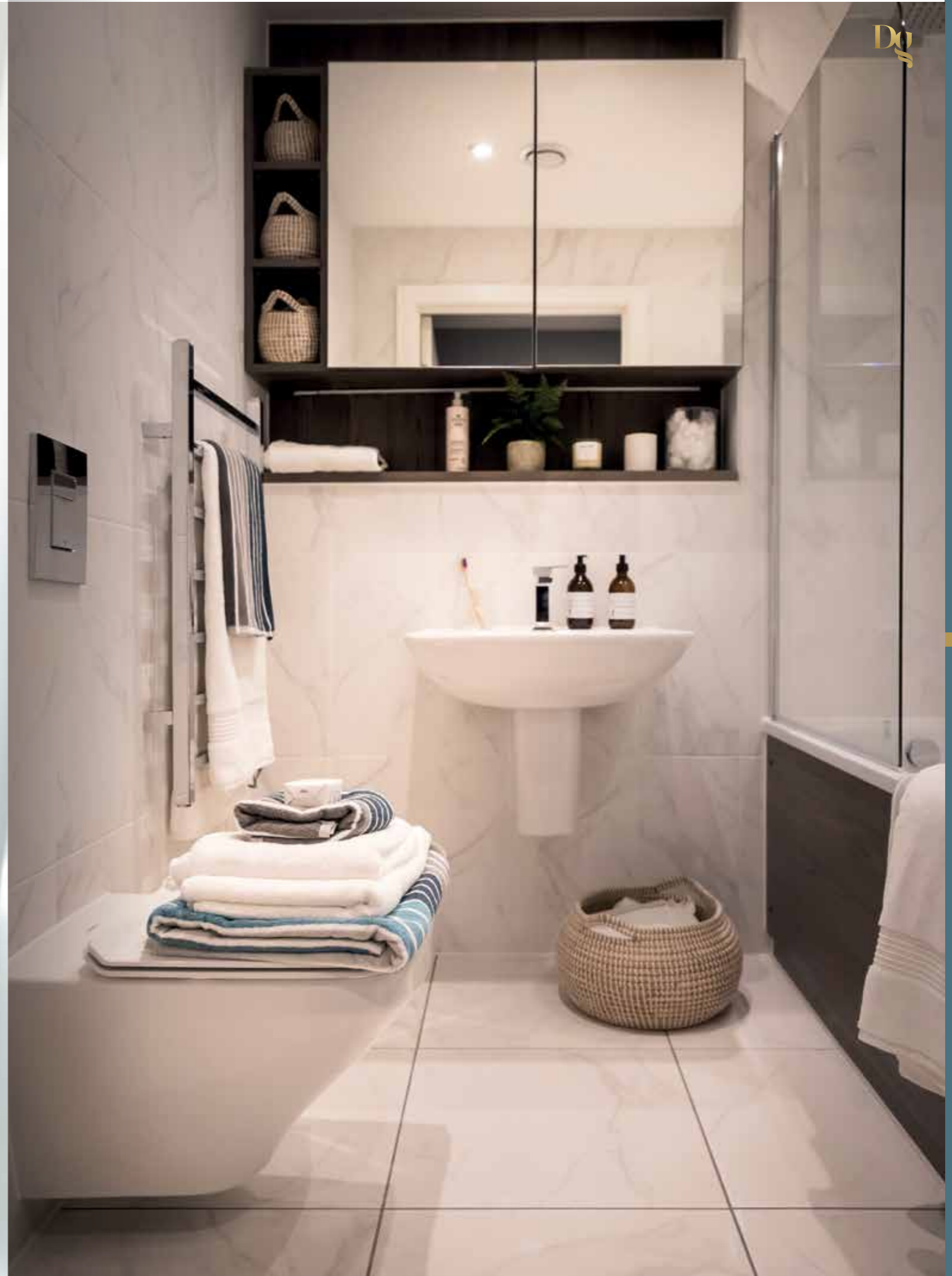
BEDROOM

Each bedroom at Deansgate Square has been designed with a good night's sleep in mind, with room for double beds, clean white walls and full-height windows. The carpet in each bedroom is from award-winning supplier Cormar, carefully selected to give you that luxury feeling each morning as soon as your feet touch the ground.



BATHROOM

Deansgate Square boasts luxury fully tiled bathrooms, perfectly partnered with stylish Duravit sanitary ware, featuring Me by Starck wash basins and Durastyle wall hung WCs with concealed cisterns and soft close seats. Bathrooms feature generously sized enamelled steel baths by Kaldewei, whilst both bathrooms and en-suites feature rainhead showers by Vado. Mood lighting is also installed to give the complete sense of luxury and relaxation in the bathroom.



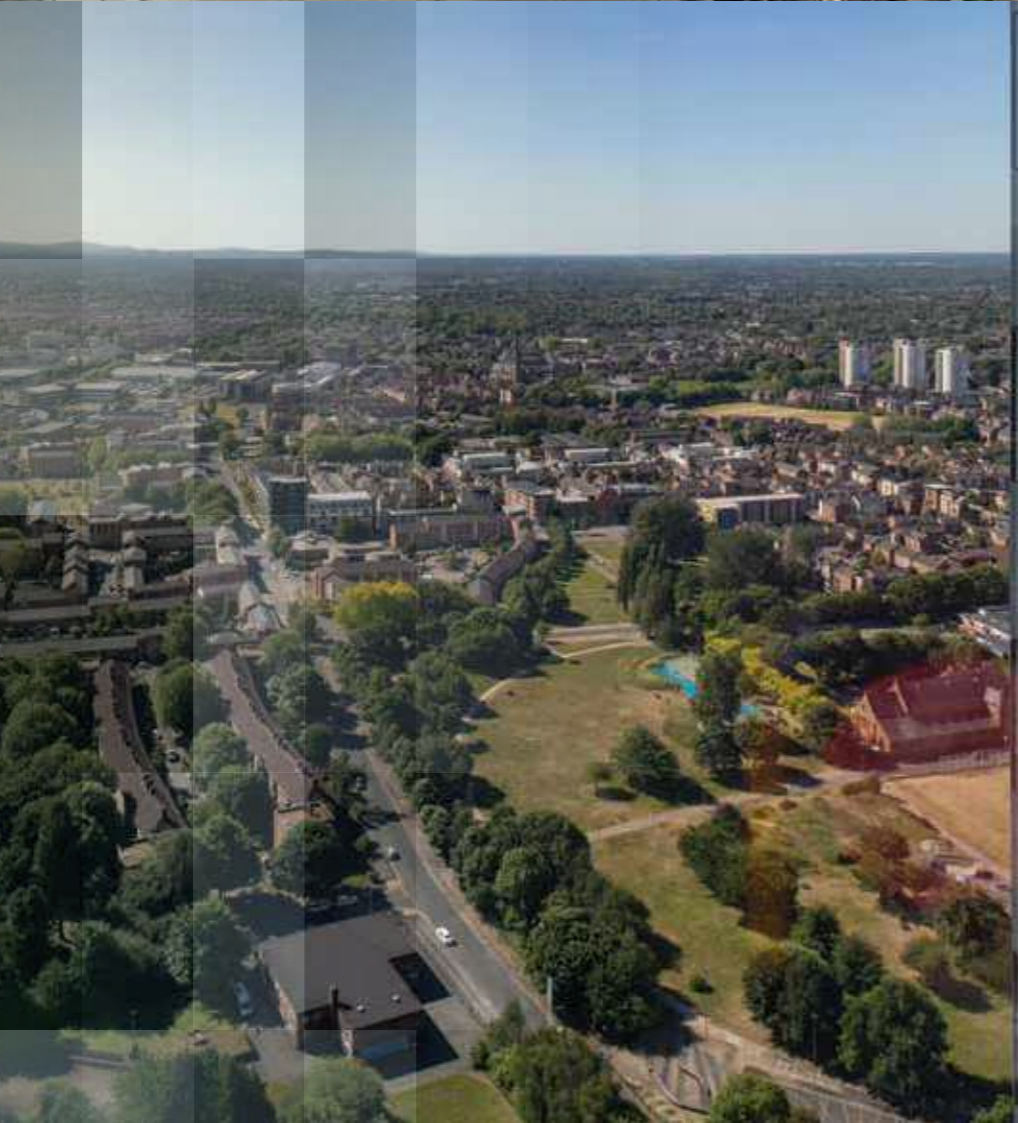
NORTH



EAST



SOUTH



WEST



Apartment Specifications

INTERNAL FINISHES

- Walnut veneer apartment entrance doors and white satinwood internal doors
- Chrome ironmongery
- Satinwood finish to internal skirtings and architraves
- White emulsion to walls and ceilings

FLOORING

- Havwoods Bronzo narrow plank, engineered oak flooring in a herringbone pattern in living areas and hallways
- Cormar carpets in bedrooms
- Tiling to bathrooms, en-suites and cloakrooms

KITCHENS

- Bespoke English kitchen cabinets
- Handleless door and drawer fronts
- Composite 22mm square-edged work surfaces with full-height glass splashbacks*
- Integrated Neff touch control ceramic hob, oven and concealed re-circulating cooker hood
- Integrated Neff fridge-freezer and automatic dishwasher
- Integrated CDA wine cooler
- Underslung composite sink unit with swan neck monoblock mixer tap
- LED under unit lighting

BATHROOMS & EN-SUITES

- Duravit sanitary ware featuring Me by Starck wall hung wash basins and Durastyle wall hung WCs with concealed cisterns and soft close seats
- Kaldewei baths
- Vado brassware and showers
- Rainhead showers
- Glazed shower screens
- Ceramic tiled walls
- Bespoke storage with mirrored doors, built-in shaver socket and mood lighting

ELECTRICAL & COMMUNICATION

- LED downlights to hallways, living areas, bedrooms, bathrooms and en-suites
- Provision for BT, Sky Q and Virgin Media in living areas and bedrooms**
- Hyperoptic broadband (speeds of up to 1Gb)
- Brushed nickel sockets and switches throughout

HEATING

- Adax Neo slim-line electric panel heaters with central timer (in hallway)
- Chrome ladder towel rails to bathrooms and en-suites

SAFETY & SECURITY

- Secure residents' entrances with dedicated fob access to shared spaces and apartments
- Automated door entry system with video and audio streaming
- Dedicated concierge operating 24/7
- Smoke and heat detectors to kitchens and entrance halls
- Sprinkler system
- Vertical dimout blinds throughout

*For kitchen preselections please see page 68
 ** BT not available in bedrooms

The specification is the anticipated specification but may be subject to change as necessary and without notice. Any photographs or computer generated images are indicative of the quality and style of the specification and may not represent the actual fittings and furnishings at the development. Please note kitchen layouts are indicative and may be subject to change.



Penthouse Specifications

INTERNAL FINISHES

- Walnut veneer apartment entrance and internal doors to match†
- Wood finish balustrade to stairs
- Chrome ironmongery
- Satinwood finish to internal skirtings and architraves
- White emulsion to walls and ceilings

FLOORING

- Havwoods Bronzo narrow plank, engineered oak flooring in a herringbone pattern to living areas and hallways
- Cormar carpets to bedrooms
- Tiling to bathrooms, en-suites and cloakrooms

KITCHENS

- Integrated Siematic kitchen with handleless door and drawer fronts
- Corian work surfaces with a Mixa sink
- Quooker Fusion 3-in-1 Boiler Tap in Chrome
- Integrated Siemens touch control ceramic hob oven (5 ring) with warming drawer, and concealed re-circulating cooker hood†
- Integrated Siemens fridge-freezer and automatic dishwasher
- Integrated CDA wine cooler
- LED under unit lighting

BATHROOMS & EN-SUITES

- Duravit sanitary ware featuring Me by Starck wall hung wash basins (double unit in Bedroom 1)†
- Durastyle wall hung WCs with concealed cisterns and soft close seats
- Free standing baths†
- Vado brassware and showers
- Rainhead showers
- Glazed shower screens
- Ceramic tiled walls
- Bespoke storage with mirrored doors, built-in shaver socket and mood lighting

BEDROOMS

- Bespoke his & hers dressing areas to master bedroom

ELECTRICAL & COMMUNICATION

- LED downlights to hallways, living areas, bedrooms, bathrooms and en-suites
- Provision for BT, Sky Q and Virgin Media in living areas and bedrooms**
- Hyperoptic broadband (speeds up to 1Gb)
- Brushed nickel sockets and switches throughout

HEATING

- Adax Neo slim-line electric panel heaters with central timer (in hallway)
- Under floor heating to living areas and hallways
- Chrome heated towel rails to bathroom and en-suites
- Double hot water cylinder providing twice as much hot water†
- Cooling / Air conditioning†

SAFETY & SECURITY

- Secure residents' entrances with dedicated fob access to shared spaces and apartments
- Automated door entry system with video and audio streaming
- Dedicated concierge operating 24/7
- Smoke and heat detectors to kitchens and entrance halls
- Sprinkler system
- Electric dimout roller blinds throughout (remote controlled)†

†Exclusive to Penthouses.
 ** BT not available in bedrooms

Integrated kitchens designed by Stuart Fraser.

The specification is the anticipated specification but may be subject to change as necessary and without notice. Any photographs or computer generated images are indicative of the quality and style of the specification and may not represent the actual fittings and furnishings at the development. Please note kitchen layouts are indicative and may be subject to change.



Kitchen Selections

LEVEL	MAIN UNITS	FEATURE UNITS	WORKSURFACES	GLASS SPLASHBACK
MEZZ	Vinyl wrapped Dust Grey	Indigo Blue	Apollo Ice White	Deco Matte Anchor
1	Vinyl wrapped Stone Grey	Cuzco Oro Leather	Apollo Moon Rock	Deco Glaze Silt
2	Vinyl wrapped Dust Grey	Indigo Blue	Apollo Ice White	Deco Matte Anchor
3	Vinyl wrapped Stone Grey	Cuzco Oro Leather	Apollo Moon Rock	Deco Glaze Silt
4	Vinyl wrapped Dust Grey	Indigo Blue	Apollo Ice White	Deco Matte Anchor
5	Vinyl wrapped Stone Grey	Cuzco Oro Leather	Apollo Moon Rock	Deco Glaze Silt
6	Vinyl wrapped Dust Grey	Indigo Blue	Apollo Ice White	Deco Matte Anchor
7	Vinyl wrapped Stone Grey	Cuzco Oro Leather	Apollo Moon Rock	Deco Glaze Silt
8	Vinyl wrapped Dust Grey	Indigo Blue	Apollo Ice White	Deco Matte Anchor
9	Vinyl wrapped Stone Grey	Cuzco Oro Leather	Apollo Moon Rock	Deco Glaze Silt
10	Vinyl wrapped Dust Grey	Indigo Blue	Apollo Ice White	Deco Matte Anchor
11	Vinyl wrapped Stone Grey	Cuzco Oro Leather	Apollo Moon Rock	Deco Glaze Silt
12	Vinyl wrapped Dust Grey	Indigo Blue	Apollo Ice White	Deco Matte Anchor
13	Vinyl wrapped Stone Grey	Cuzco Oro Leather	Apollo Moon Rock	Deco Glaze Silt
14	Vinyl wrapped Dust Grey	Indigo Blue	Apollo Ice White	Deco Matte Anchor
15	Vinyl wrapped Stone Grey	Cuzco Oro Leather	Apollo Moon Rock	Deco Glaze Silt
16	Vinyl wrapped Dust Grey	Indigo Blue	Apollo Ice White	Deco Matte Anchor
17	Vinyl wrapped Stone Grey	Cuzco Oro Leather	Apollo Moon Rock	Deco Glaze Silt
18	Vinyl wrapped Dust Grey	Indigo Blue	Apollo Ice White	Deco Matte Anchor
19	Vinyl wrapped Stone Grey	Cuzco Oro Leather	Apollo Moon Rock	Deco Glaze Silt
20	Vinyl wrapped Dust Grey	Indigo Blue	Apollo Ice White	Deco Matte Anchor
21	Vinyl wrapped Stone Grey	Cuzco Oro Leather	Apollo Moon Rock	Deco Glaze Silt
22	Vinyl wrapped Dust Grey	Indigo Blue	Apollo Ice White	Deco Matte Anchor
23	Vinyl wrapped Stone Grey	Cuzco Oro Leather	Apollo Moon Rock	Deco Glaze Silt
24	Vinyl wrapped Dust Grey	Indigo Blue	Apollo Ice White	Deco Matte Anchor
25	Vinyl wrapped Stone Grey	Cuzco Oro Leather	Apollo Moon Rock	Deco Glaze Silt
26	Vinyl wrapped Dust Grey	Indigo Blue	Apollo Ice White	Deco Matte Anchor
27	Vinyl wrapped Stone Grey	Cuzco Oro Leather	Apollo Moon Rock	Deco Glaze Silt
28	Vinyl wrapped Dust Grey	Indigo Blue	Apollo Ice White	Deco Matte Anchor
29	Vinyl wrapped Stone Grey	Cuzco Oro Leather	Apollo Moon Rock	Deco Glaze Silt
30	Vinyl wrapped Dust Grey	Indigo Blue	Apollo Ice White	Deco Matte Anchor
31	Vinyl wrapped Stone Grey	Cuzco Oro Leather	Apollo Moon Rock	Deco Glaze Silt
32	Vinyl wrapped Dust Grey	Indigo Blue	Apollo Ice White	Deco Matte Anchor
33	Vinyl wrapped Stone Grey	Cuzco Oro Leather	Apollo Moon Rock	Deco Glaze Silt
34	Vinyl wrapped Dust Grey	Indigo Blue	Apollo Ice White	Deco Matte Anchor
35	Vinyl wrapped Stone Grey	Cuzco Oro Leather	Apollo Moon Rock	Deco Glaze Silt
36	Vinyl wrapped Dust Grey	Indigo Blue	Apollo Ice White	Deco Matte Anchor
37	Vinyl wrapped Stone Grey	Cuzco Oro Leather	Apollo Moon Rock	Deco Glaze Silt
38	Vinyl wrapped Dust Grey	Indigo Blue	Apollo Ice White	Deco Matte Anchor
39	Vinyl wrapped Stone Grey	Cuzco Oro Leather	Apollo Moon Rock	Deco Glaze Silt
40	Vinyl wrapped Dust Grey	Indigo Blue	Apollo Ice White	Deco Matte Anchor
41	Vinyl wrapped Stone Grey	Cuzco Oro Leather	Apollo Moon Rock	Deco Glaze Silt
42	Vinyl wrapped Dust Grey	Indigo Blue	Apollo Ice White	Deco Matte Anchor
43	Vinyl wrapped Stone Grey	Cuzco Oro Leather	Apollo Moon Rock	Deco Glaze Silt
44	Vinyl wrapped Dust Grey	Indigo Blue	Apollo Ice White	Deco Matte Anchor
45	Vinyl wrapped Stone Grey	Cuzco Oro Leather	Apollo Moon Rock	Deco Glaze Silt
46	Vinyl wrapped Dust Grey	Indigo Blue	Apollo Ice White	Deco Matte Anchor
47	Vinyl wrapped Stone Grey	Cuzco Oro Leather	Apollo Moon Rock	Deco Glaze Silt
48	Vinyl wrapped Stone Grey	Cuzco Oro Leather	Apollo Moon Rock	Deco Glaze Silt
49	Vinyl wrapped Stone Grey	Cuzco Oro Leather	Apollo Moon Rock	Deco Glaze Silt
50*	SieMatic Range: SLC Matt Laminate	Door Finish: Stone Grey	26mm Corian in Glacier White with a Mixa Sink	Bronze Mirror
50**	SieMatic Range: SLC Matt Laminate	Door Finish: Graphite Grey	26mm Corian in Designer White with a Mixa Sink	Bronze Mirror

* PH01 - THE PANKHURST
 PH02 - THE TURING
 PH03 - THE ENGELLS
 ** PH04 - THE GASKELL



Computer generated images and photography are intended for illustrative purposes only and should be treated as general guidance only

Apartment Locator

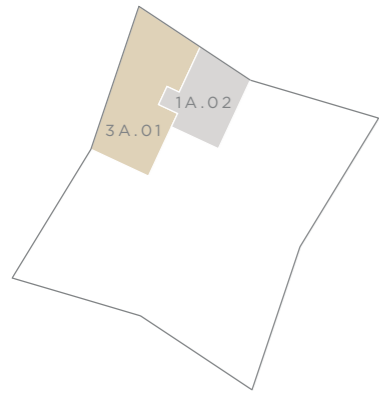
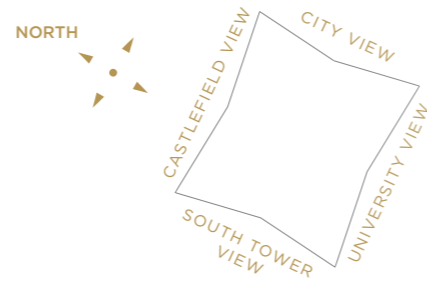
TYPE	APARTMENT NUMBER	LEVEL	VIEW	TOTAL M ²	TOTAL FT ²	PAGE
ONE BEDROOM						
1A.01	01.01 02.01 03.01 04.01 05.01 06.01 07.01 08.01 09.01 36.01	01-09, 36	CITY CENTRE	56.08	604	73
1A.01	01.05 02.05 03.05 04.05 05.05 06.05 07.05 08.05 09.05 36.05	01-09, 36	SOUTH TOWER	56.60	609	73
1A.02	01.04 02.04 03.04 04.04 05.04 06.04 07.04 08.04 09.04 36.04	01-09, 36	SOUTH TOWER	56.18	605	74
1A.02	MZ.02 01.08 02.08 03.08 04.08 05.08 06.08 07.08 08.08 09.08 36.08	MEZZ-09, 36	CITY CENTRE	56.54	609	74
1B.01	10.02 11.02 12.02 13.02 14.02 15.02	10-15	UNIVERSITY	52.57	566	75
1B.03	10.07 11.07 12.07 13.07 14.07 15.07	10-15	CASTLEFIELD	52.57	566	75
1B.02	10.04 11.04 12.04 13.04 14.04 15.04	10-15	UNIVERSITY	52.78	568	76
1B.04	10.09 11.09 12.09 13.09 14.09 15.09	10-15	CASTLEFIELD	52.89	569	76
1C.01	10.08 11.08 12.08 13.08 14.08 15.08	10-15	CASTLEFIELD	41.74	449	77
1C.02	10.03 11.03 12.03 13.03 14.03 15.03	10-15	UNIVERSITY	41.79	450	78
1A.05	43.03 44.03 45.03 46.03	43-46	SOUTH TOWER	56.08	604	79
1A.06	43.06 44.06 45.06 46.06	43-46	CITY CENTRE	56.18	605	80
TWO BEDROOMS						
2A.01	10.10 11.10 12.10 13.10 14.10 15.10 16.08 17.08 18.08 19.08 20.08 21.08 22.08 23.08 24.08 25.08 26.08 27.08 28.08 29.08 30.08 31.08 32.08 33.08 34.08 35.08 37.08 38.08 39.08 40.08 41.08	10-35, 37-41	CITY CENTRE / CASTLEFIELD	90.26	972	81
2A.01	10.05 11.05 12.05 13.05 14.05 15.05 16.04 17.04 18.04 19.04 20.04 21.04 22.04 23.04 24.04 25.04 26.04 27.04 28.04 29.04 30.04 31.04 32.04 33.04 34.04 35.04 37.04 38.04 39.04 40.04 41.04	10-35, 37-41	SOUTH TOWER / UNIVERSITY	90.75	977	81
2A.02	10.01 11.01 12.01 13.01 14.01 15.01 16.01 17.01 18.01 19.01 20.01 21.01 22.01 23.01 24.01 25.01 26.01 27.01 28.01 29.01 30.01 31.01 32.01 33.01 34.01 35.01 37.01 38.01 39.01 40.01 41.01	10-35, 37-41	CITY CENTRE	90.90	978	82
2A.02	10.06 11.06 12.06 13.06 14.06 15.06 16.05 17.05 18.05 19.05 20.05 21.05 22.05 23.05 24.05 25.05 26.05 27.05 28.05 29.05 30.05 31.05 32.05 33.05 34.05 35.05 37.05 38.05 39.05 40.05 41.05	10-35, 37-41	SOUTH TOWER / CASTLEFIELD	90.49	974	82
2B.01	16.02 17.02 18.02 19.02 20.02 21.02 22.02 23.02 24.02 25.02 26.02 27.02 28.02 29.02 30.02 31.02 32.02 33.02 34.02 35.02 37.02 38.02 39.02 40.02 41.02	16-35, 37-41	UNIVERSITY	74.29	800	83
2B.01	16.06 17.06 18.06 19.06 20.06 21.06 22.06 23.06 24.06 25.06 26.06 27.06 28.06 29.06 30.06 31.06 32.06 33.06 34.06 35.06 37.06 38.06 39.06 40.06 41.06	16-35, 37-41	CASTLEFIELD	74.13	798	83

Apartment Locator

TYPE	APARTMENT NUMBER	LEVEL	VIEW	TOTAL M ²	TOTAL FT ²	PAGE
TWO BEDROOMS						
2B.02	16.03 17.03 18.03 19.03 20.03 21.03 22.03 23.03 24.03 25.03 26.03 27.03 28.03 29.03 30.03 31.03 32.03 33.03 34.03 35.03 37.03 38.03 39.03 40.03 41.03	16-35, 37-41	UNIVERSITY	74.55	802	84
2B.02	16.07 17.07 18.07 19.07 20.07 21.07 22.07 23.07 24.07 25.07 26.07 27.07 28.07 29.07 30.07 31.07 32.07 33.07 34.07 35.07 37.07 38.07 39.07 40.07 41.07	16-35, 37-41	CASTLEFIELD	74.12	798	84
2D.01	43.05 44.05 45.05 46.05	43-46	CITY CENTRE / CASTLEFIELD	109.26	1176	85
2D.02	43.04 44.04 45.04 46.04	43-46	SOUTH TOWER / CASTLEFIELD	110.38	1188	86
THREE BEDROOMS						
3A.01	01.03 02.03 03.03 04.03 05.03 06.03 07.03 08.03 09.03 36.03	01-09, 36	UNIVERSITY	106.88	1150	87
3A.01	MZ.01 01.07 02.07 03.07 04.07 05.07 06.07 07.07 08.07 09.07 36.07	MEZZ-09, 36	CITY CENTRE / CASTLEFIELD	106.88	1150	87
3A.02	01.02 02.02 03.02 04.02 05.02 06.02 07.02 08.02 09.02 36.02	01-09, 36	CITY CENTRE	106.67	1148	88
3A.02	01.06 02.06 03.06 04.06 05.06 06.06 07.06 08.06 09.06 36.06	01-09, 36	SOUTH TOWER / CASTLEFIELD	106.05	1142	88
3A.05	43.02 44.02 45.02 46.02	43-46	SOUTH TOWER / UNIVERSITY	167.09	1799	89
3A.06	43.01 44.01 45.01 46.01	43-46	UNIVERSITY / CITY CENTRE	166.87	1796	90
3B.01	42.02 47.02 48.02 49.02	42, 47-49	UNIVERSITY / SOUTH TOWER	167.58	1804	91
3B.01	42.04 47.04 48.04 49.04	42, 47-49	CITY CENTRE / CASTLEFIELD	166.87	1796	91
3B.02	42.01 47.01 48.01 49.01	42, 47-49	CITY CENTRE / UNIVERSITY	167.59	1804	92
3B.02	42.03 47.03 48.03 49.03	42, 47-49	SOUTH TOWER / CASTLEFIELD	167.09	1799	92
PENTHOUSES						
PENT	PH.01 - THE PANKHURST	50-51	CITY CENTRE / UNIVERSITY	289.72	3119	94
PENT	PH.02 - THE TURING	50-51	UNIVERSITY / SOUTH TOWER	290.35	3125	96
PENT	PH.03 - THE ENGELS	50-51	SOUTH TOWER / CASTLEFIELD	290.43	3126	98
PENT	PH.04 - THE GASKELL	50-51	CITY CENTRE / CASTLEFIELD	299.93	3228	100

Plot Locator

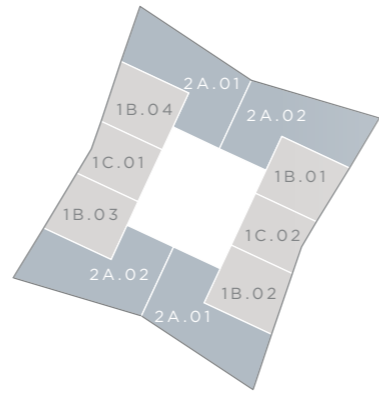
- ONE BEDROOM
- TWO BEDROOM
- THREE BEDROOM
- PENTHOUSES



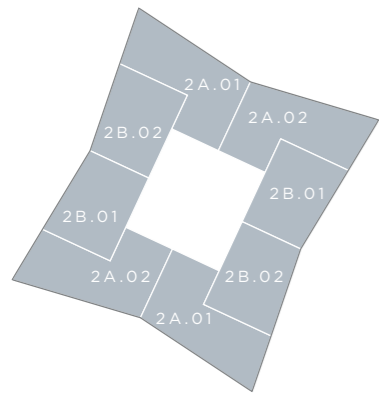
MEZZANINE LEVEL



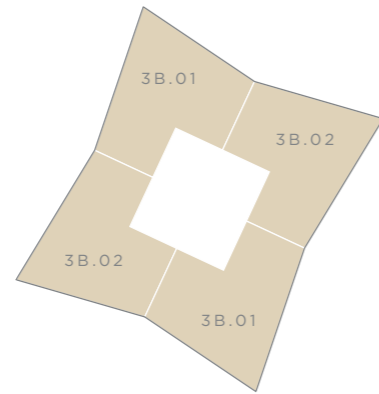
LEVELS 01-09, 36



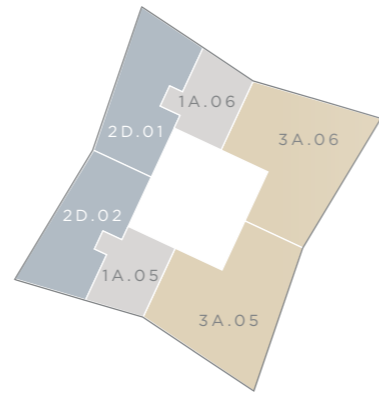
LEVELS 10-15



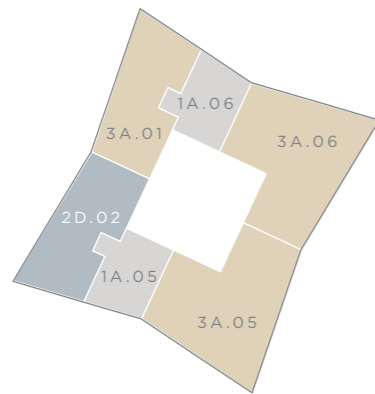
LEVELS 16-35, 37-41



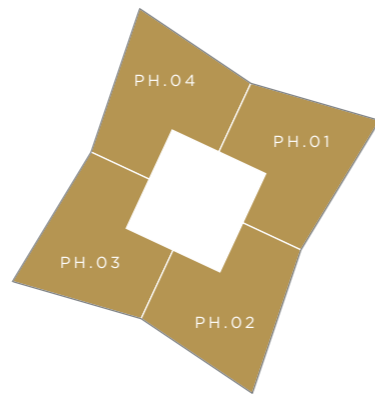
LEVELS 42, 47-49



LEVELS 43, 45 & 46



LEVEL 44



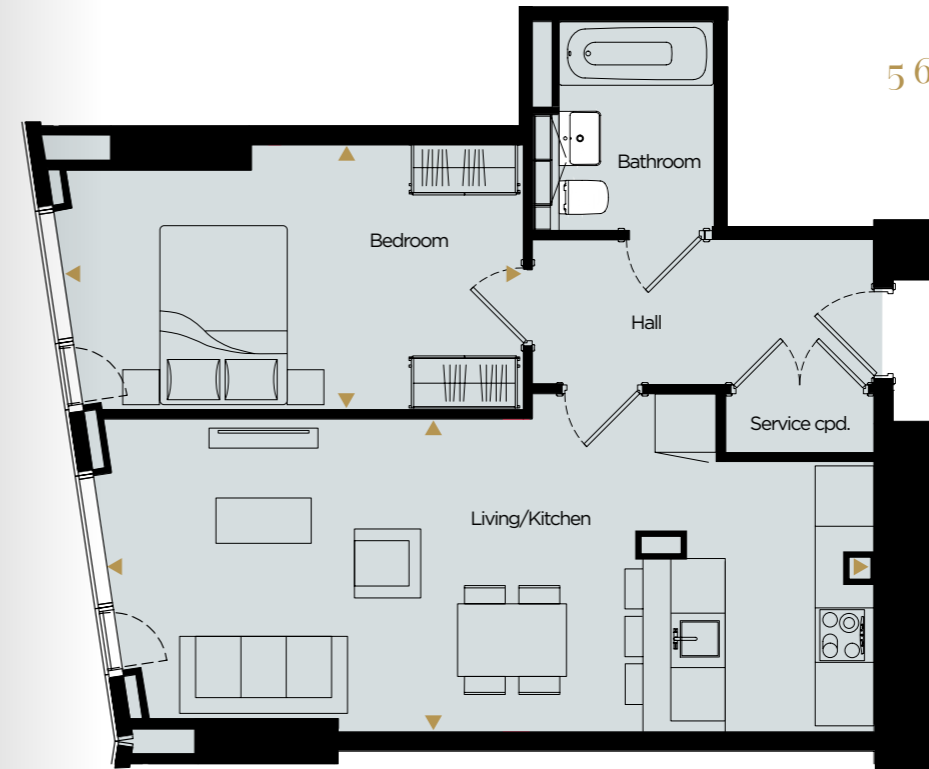
LEVELS 50-51

One Bedroom

APARTMENT | 1A.01

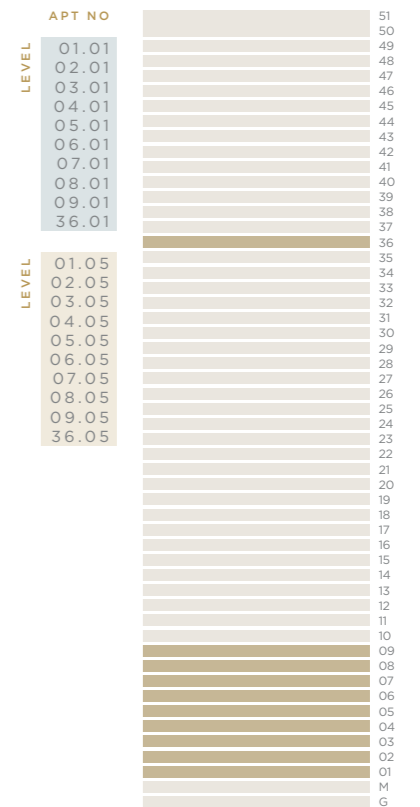
OVERALL:

56.08 M² | 604 FT²



SIZES	METRIC (M)	IMPERIAL
LIVING / KITCHEN	3.45 x 8.44	11'3" x 27'8"
BEDROOM	2.93 x 5.02	9'7" x 16'5"

Dimensions are taken from the points indicated ◀ ▶



Please note that the position of the purge vent doors varies from floor to floor. Please note on this page the floorplan is for all odd numbered floors. Floor plans shown for Deansgate Square are with approximate dimensions only. Each layout size may vary. All measurements may vary within a tolerance of 5% and are to the maximum room dimensions. The dimensions are not intended for use for carpet/flooring sizes, appliances or furniture. Kitchen layout is indicative only. Please ask Sales Consultant for further information.

One Bedroom

APARTMENT | 1A.02

OVERALL:

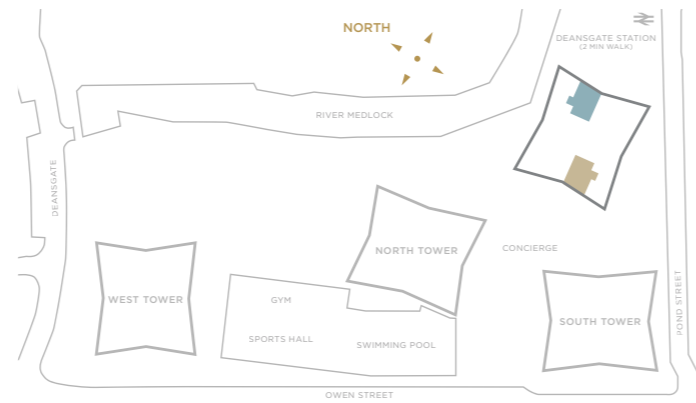
56.18 M² | 605 FT²



LEVEL	APT NO
	51
	50
	49
	48
	47
	46
	45
	44
	43
	42
	41
	40
	39
	38
	37
	36
	35
	34
	33
	32
	31
	30
	29
	28
	27
	26
	25
	24
	23
	22
	21
	20
	19
	18
	17
	16
	15
	14
	13
	12
	11
	10
	09
	08
	07
	06
	05
	04
	03
	02
	01
	M
	G
	01.04
	02.04
	03.04
	04.04
	05.04
	06.04
	07.04
	08.04
	09.04
	36.04

SIZES	METRIC (M)	IMPERIAL
LIVING / KITCHEN	3.45 x 8.44	11'3" x 27'8"
BEDROOM	2.93 x 5.02	9'7" x 16'5"

Dimensions are taken from the points indicated ◀ ▶



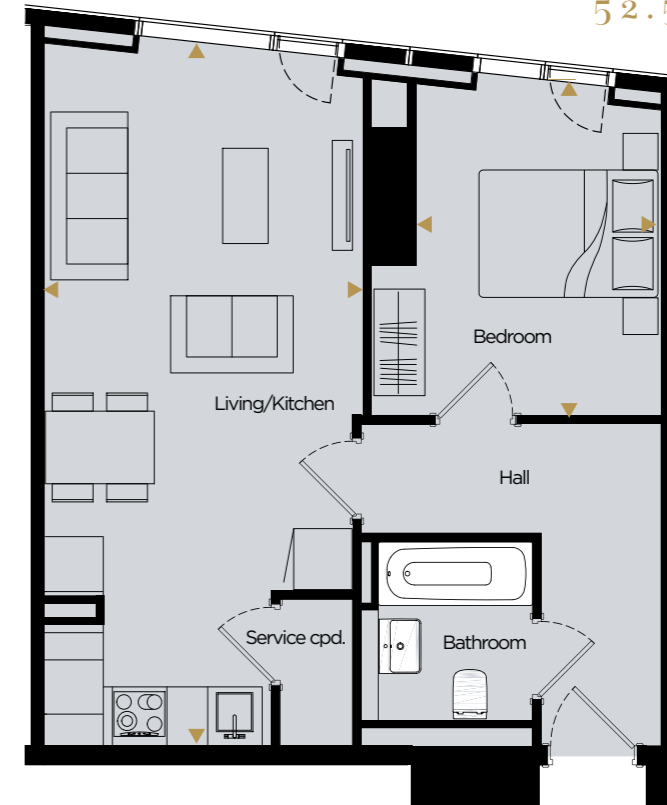
Please note that the position of the purge vent doors varies from floor to floor. Please note on this page the floorplan is for all even numbered floors. Floor plans shown for Deansgate Square are with approximate dimensions only. Each layout size may vary. All measurements may vary within a tolerance of 5% and are to the maximum room dimensions. The dimensions are not intended for use for carpet/flooring sizes, appliances or furniture. Kitchen layout is indicative only. Please ask Sales Consultant for further information.

One Bedroom

APARTMENT | 1B.01 & 1B.03

OVERALL:

52.57 M² | 566 FT²



SIZES	METRIC (M)	IMPERIAL
LIVING / KITCHEN	7.75 x 3.50	25'5" x 11'6"
BEDROOM	3.70 x 2.71	12'2" x 8'10"

Dimensions are taken from the points indicated ◀ ▶

LEVEL	APT NO
	51
	50
	49
	48
	47
	46
	45
	44
	43
	42
	41
	40
	39
	38
	37
	36
	35
	34
	33
	32
	31
	30
	29
	28
	27
	26
	25
	24
	23
	22
	21
	20
	19
	18
	17
	16
	15
	14
	13
	12
	11
	10
	09
	08
	07
	06
	05
	04
	03
	02
	01
	M
	G
	10.02
	11.02
	12.02
	13.02
	14.02
	15.02
	10.07
	11.07
	12.07
	13.07
	14.07
	15.07



Please note that the position of the purge vent doors varies from floor to floor. Please note on this page the floorplan is for all even numbered floors. Floor plans shown for Deansgate Square are with approximate dimensions only. Each layout size may vary. All measurements may vary within a tolerance of 5% and are to the maximum room dimensions. The dimensions are not intended for use for carpet/flooring sizes, appliances or furniture. Kitchen layout is indicative only. Please ask Sales Consultant for further information.

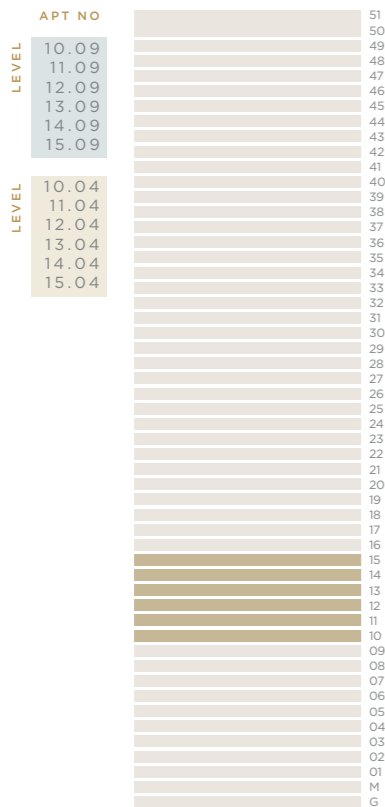
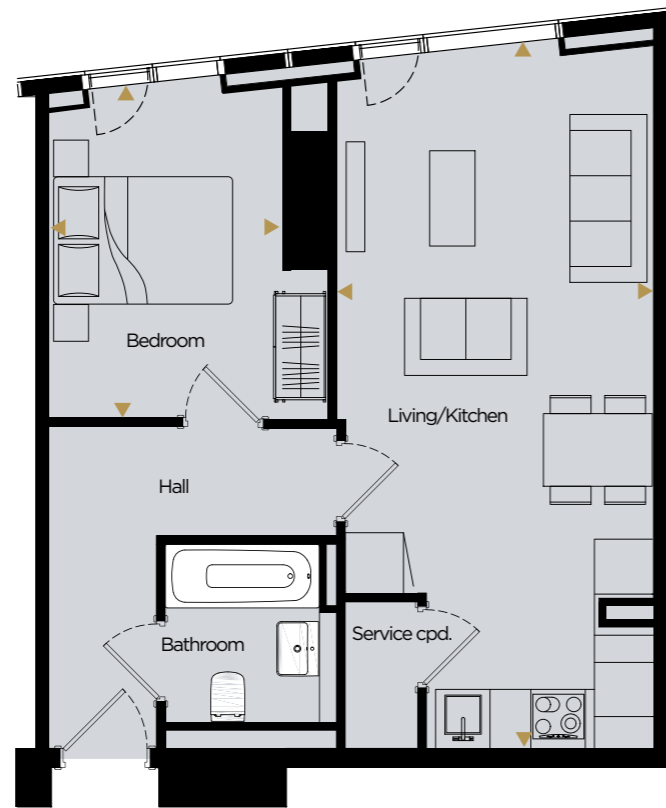
One Bedroom

APARTMENT | 1B.02 & 1B.04

OVERALL:

52.78 M² | 568 FT²

Please note 1B.04 is slightly larger 52.89 m² | 569 ft²



SIZES	METRIC (M)	IMPERIAL
LIVING / KITCHEN	7.75 x 3.50	25'5" x 11'6"
BEDROOM	3.70 x 2.71	12'2" x 8'10"

Dimensions are taken from the points indicated ◀ ▶



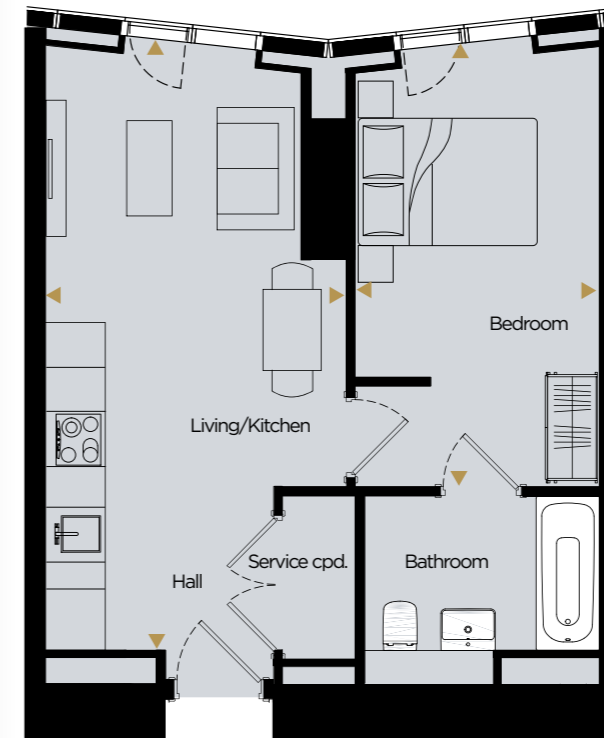
Please note that the position of the purge vent doors varies from floor to floor. Please note on this page the floorplan is for all odd numbered floors. Floor plans shown for Deansgate Square are with approximate dimensions only. Each layout size may vary. All measurements may vary within a tolerance of 5% and are to the maximum room dimensions. The dimensions are not intended for use for carpet/flooring sizes, appliances or furniture. Kitchen layout is indicative only. Please ask Sales Consultant for further information.

One Bedroom

APARTMENT | 1C.01

OVERALL:

41.74 M² | 449 FT²

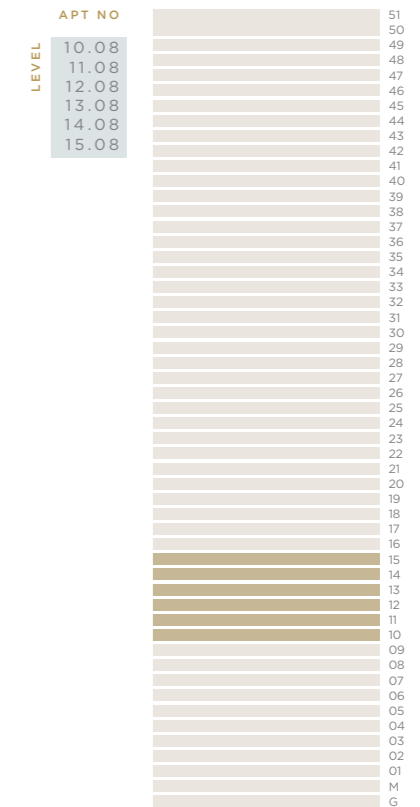


SIZES	METRIC (M)	IMPERIAL
LIVING / KITCHEN	6.70 x 3.29	21'11" x 10'10"
BEDROOM	4.89 x 2.70	16'1" x 8'10"

Dimensions are taken from the points indicated ◀ ▶



Please note that the position of the purge vent doors varies from floor to floor. Please note on this page the floorplan is for all odd numbered floors. Floor plans shown for Deansgate Square are with approximate dimensions only. Each layout size may vary. All measurements may vary within a tolerance of 5% and are to the maximum room dimensions. The dimensions are not intended for use for carpet/flooring sizes, appliances or furniture. Kitchen layout is indicative only. Please ask Sales Consultant for further information.

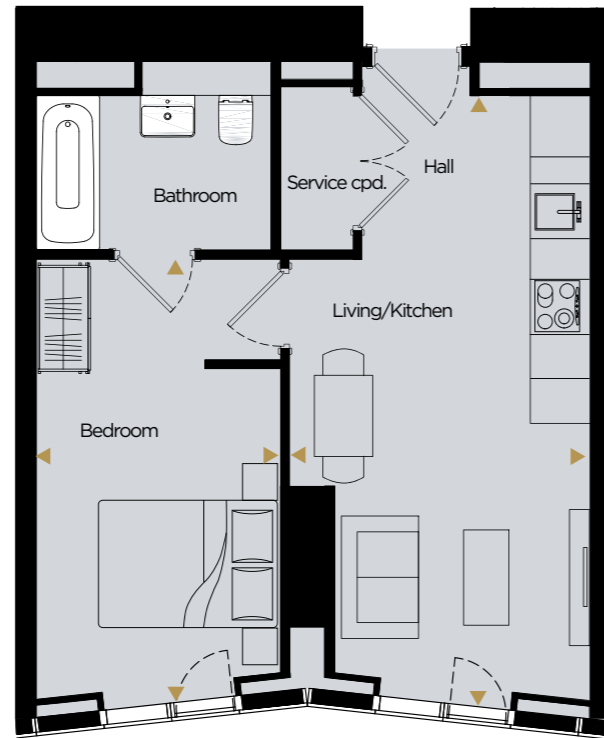


One Bedroom

APARTMENT | 1C.02

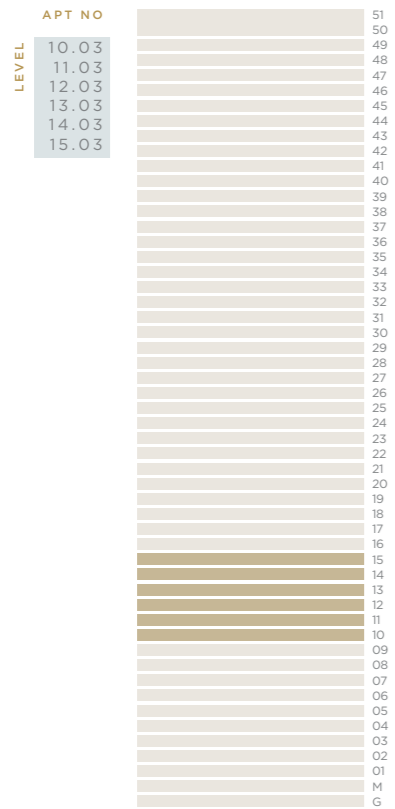
OVERALL:

41.79 M² | 450 FT²



SIZES	METRIC (M)	IMPERIAL
LIVING / KITCHEN	6.70 x 3.29	21'11" x 10'10"
BEDROOM	4.89 x 2.70	16'1" x 8'10"

Dimensions are taken from the points indicated ◀ ▶



Please note that the position of the purge vent doors varies from floor to floor. Please note on this page the floorplan is for all odd numbered floors. Floor plans shown for Deansgate Square are with approximate dimensions only. Each layout size may vary. All measurements may vary within a tolerance of 5% and are to the maximum room dimensions. The dimensions are not intended for use for carpet/flooring sizes, appliances or furniture. Kitchen layout is indicative only. Please ask Sales Consultant for further information.

One Bedroom

APARTMENT | 1A.05

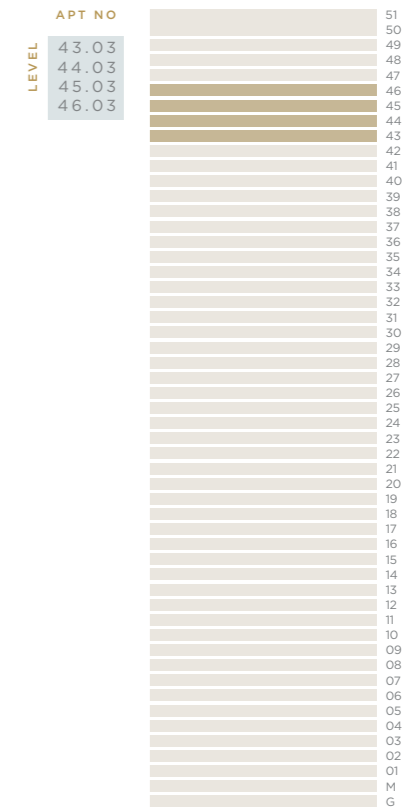
OVERALL:

56.08 M² | 604 FT²



SIZES	METRIC (M)	IMPERIAL
LIVING / KITCHEN	8.45 x 3.45	27'9" x 11'4"
BEDROOM	5.03 x 2.92	16'6" x 9'7"

Dimensions are taken from the points indicated ◀ ▶

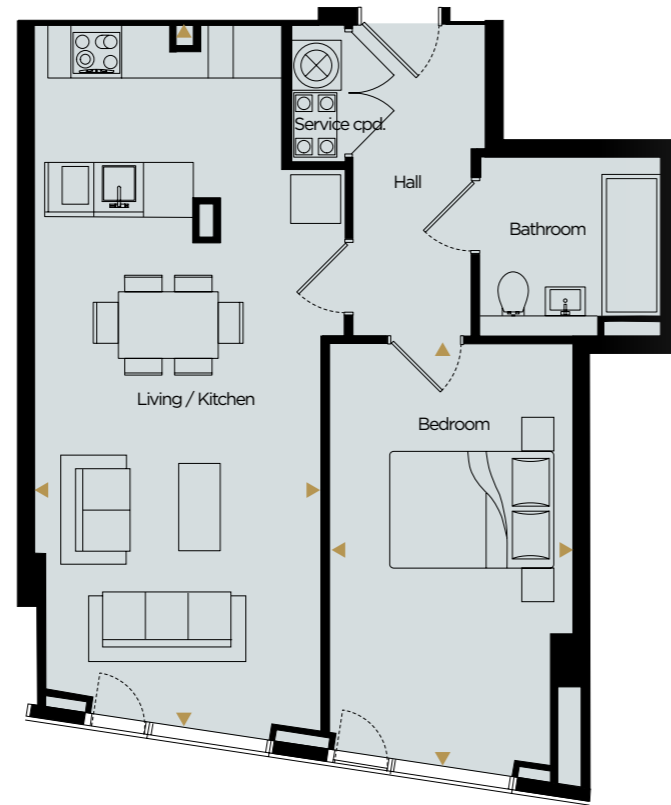


Please note that the position of the purge vent doors varies from floor to floor. Please note on this page the floorplan is for all odd numbered floors. Floor plans shown for Deansgate Square are with approximate dimensions only. Each layout size may vary. All measurements may vary within a tolerance of 5% and are to the maximum room dimensions. The dimensions are not intended for use for carpet/flooring sizes, appliances or furniture. Kitchen layout is indicative only. Please ask Sales Consultant for further information.

One Bedroom

APARTMENT | 1A.06

OVERALL:
56.18 M² | 605 FT²



SIZES	METRIC (M)	IMPERIAL
LIVING / KITCHEN	8.45 x 3.45	27'9" x 11'4"
BEDROOM	5.03 x 2.92	16'6" x 9'7"

Dimensions are taken from the points indicated ◀ ▶



Two Bedroom

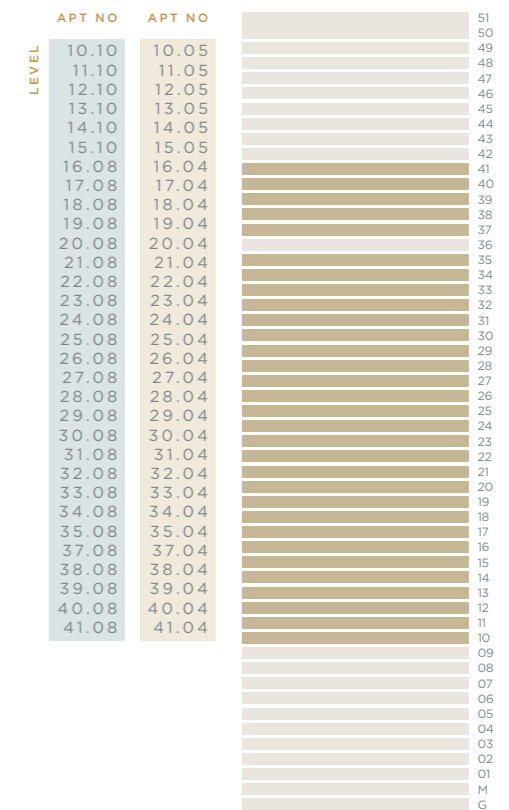
APARTMENT | 2A.01

OVERALL:
90.26 M² | 972 FT²



SIZES	METRIC (M)	IMPERIAL
LIVING / KITCHEN	5.48 x 7.22	17'11" x 23'8"
BEDROOM 1	4.41 x 2.81	14'5" x 9'3"
DRESSING	1.82 x 2.27	6'0" x 7'5"
BEDROOM 2	3.34 x 3.10	10'11" x 10'2"

Dimensions are taken from the points indicated ◀ ▶



Please note that the position of the purge vent doors varies from floor to floor. Please note on this page the floorplan is for all even numbered floors. Floor plans shown for Deansgate Square are with approximate dimensions only. Each layout size may vary. All measurements may vary within a tolerance of 5% and are to the maximum room dimensions. The dimensions are not intended for use for carpet/flooring sizes, appliances or furniture. Kitchen layout is indicative only. Please ask Sales Consultant for further information.

Please note that the position of the purge vent doors varies from floor to floor. Please note on this page the floorplan is for all odd numbered floors. Floor plans shown for Deansgate Square are with approximate dimensions only. Each layout size may vary. All measurements may vary within a tolerance of 5% and are to the maximum room dimensions. The dimensions are not intended for use for carpet/flooring sizes, appliances or furniture. Kitchen layout is indicative only. Please ask Sales Consultant for further information.

Two Bedroom

APARTMENT | 2A.02

OVERALL:

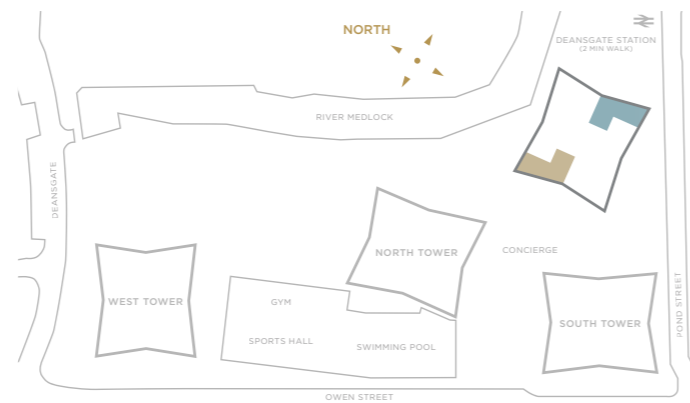
90.49 M² | 974 FT²



LEVEL	APT NO	APT NO
	10.01	10.06
	11.01	11.06
	12.01	12.06
	13.01	13.06
	14.01	14.06
	15.01	15.06
	16.01	16.05
	17.01	17.05
	18.01	18.05
	19.01	19.05
	20.01	20.05
	21.01	21.05
	22.01	22.05
	23.01	23.05
	24.01	24.05
	25.01	25.05
	26.01	26.05
	27.01	27.05
	28.01	28.05
	29.01	29.05
	30.01	30.05
	31.01	31.05
	32.01	32.05
	33.01	33.05
	34.01	34.05
	35.01	35.05
	37.01	37.05
	38.01	38.05
	39.01	39.05
	40.01	40.05
	41.01	41.05

SIZES	METRIC (M)	IMPERIAL
LIVING / KITCHEN	5.48 x 7.22	17'11" x 23'8"
BEDROOM 1	4.41 x 2.81	14'5" x 9'3"
DRESSING	1.82 x 2.27	6'0" x 7'5"
BEDROOM 2	3.34 x 3.10	10'11" x 10'2"

Dimensions are taken from the points indicated ◀ ▶



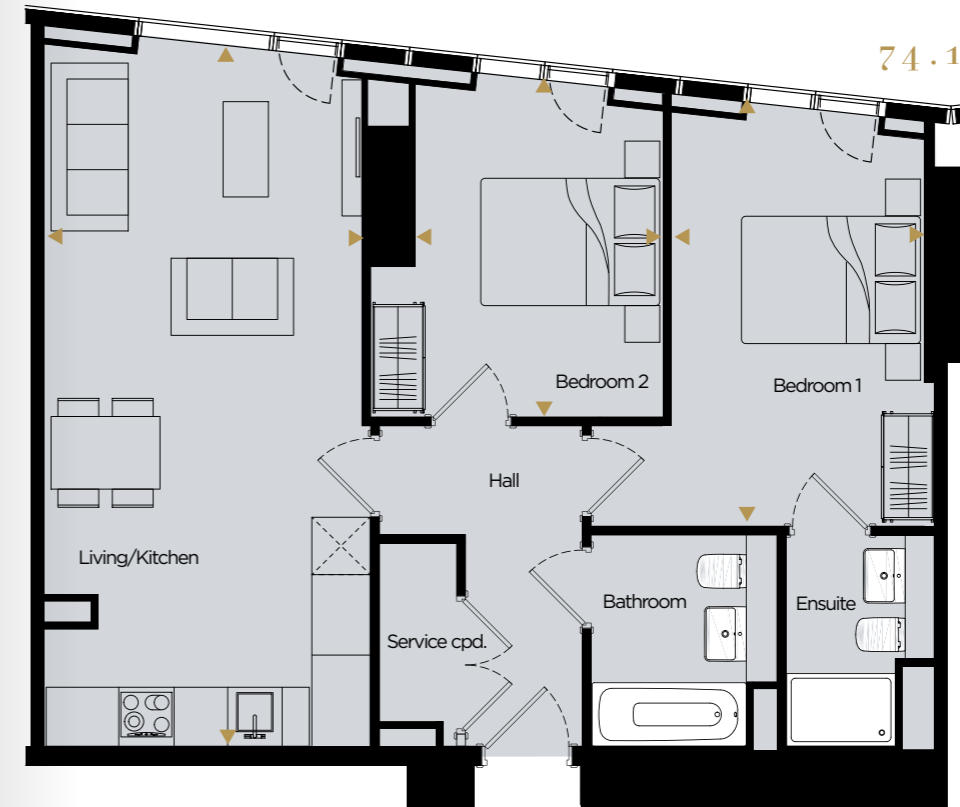
Please note that the position of the purge vent doors varies from floor to floor. Please note on this page the floorplan is for all even numbered floors. Floor plans shown for Deansgate Square are with approximate dimensions only. Each layout size may vary. All measurements may vary within a tolerance of 5% and are to the maximum room dimensions. The dimensions are not intended for use for carpet/flooring sizes, appliances or furniture. Kitchen layout is indicative only. Please ask Sales Consultant for further information.

Two Bedroom

APARTMENT | 2B.01

OVERALL:

74.13 M² | 798 FT²



SIZES	METRIC (M)	IMPERIAL
LIVING / KITCHEN	7.75 x 3.51	25'5" x 11'6"
BEDROOM 1	4.63 x 2.84	15'2" x 9'3"
BEDROOM 2	3.72 x 2.72	12'2" x 8'11"

Dimensions are taken from the points indicated ◀ ▶

LEVEL	APT NO	APT NO
	16.02	16.06
	17.02	17.06
	18.02	18.06
	19.02	19.06
	20.02	20.06
	21.02	21.06
	22.02	22.06
	23.02	23.06
	24.02	24.06
	25.02	25.06
	26.02	26.06
	27.02	27.06
	28.02	28.06
	29.02	29.06
	30.02	30.06
	31.02	31.06
	32.02	32.06
	33.02	33.06
	34.02	34.06
	35.02	35.06
	37.02	37.06
	38.02	38.06
	39.02	39.06
	40.02	40.06
	41.02	41.06



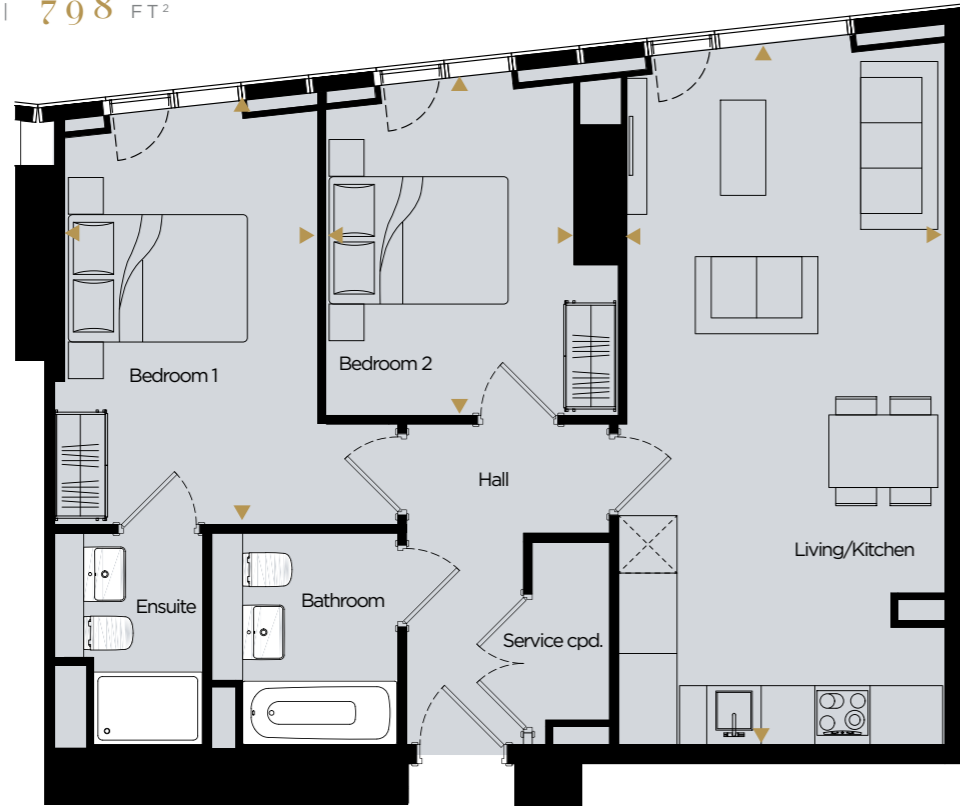
Please note that the position of the purge vent doors varies from floor to floor. Please note on this page the floorplan is for all even numbered floors. Floor plans shown for Deansgate Square are with approximate dimensions only. Each layout size may vary. All measurements may vary within a tolerance of 5% and are to the maximum room dimensions. The dimensions are not intended for use for carpet/flooring sizes, appliances or furniture. Kitchen layout is indicative only. Please ask Sales Consultant for further information.

Two Bedroom

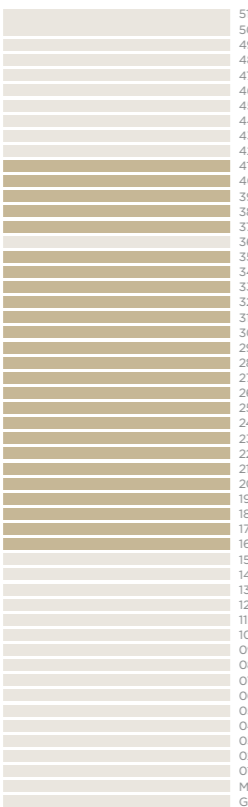
APARTMENT | 2B.02

OVERALL:

74.12 M² | 798 FT²



LEVEL	APT NO	APT NO
	16.03	16.07
	17.03	17.07
	18.03	18.07
	19.03	19.07
	20.03	20.07
	21.03	21.07
	22.03	22.07
	23.03	23.07
	24.03	24.07
	25.03	25.07
	26.03	26.07
	27.03	27.07
	28.03	28.07
	29.03	29.07
	30.03	30.07
	31.03	31.07
	32.03	32.07
	33.03	33.07
	34.03	34.07
	35.03	35.07
	37.03	37.07
	38.03	38.07
	39.03	39.07
	40.03	40.07
	41.03	41.07



SIZES	METRIC (M)	IMPERIAL
LIVING / KITCHEN	7.75 x 3.51	25'5" x 11'6"
BEDROOM 1	4.63 x 2.84	15'2" x 9'3"
BEDROOM 2	3.72 x 2.72	12'2" x 8'11"

Dimensions are taken from the points indicated ◀ ▶



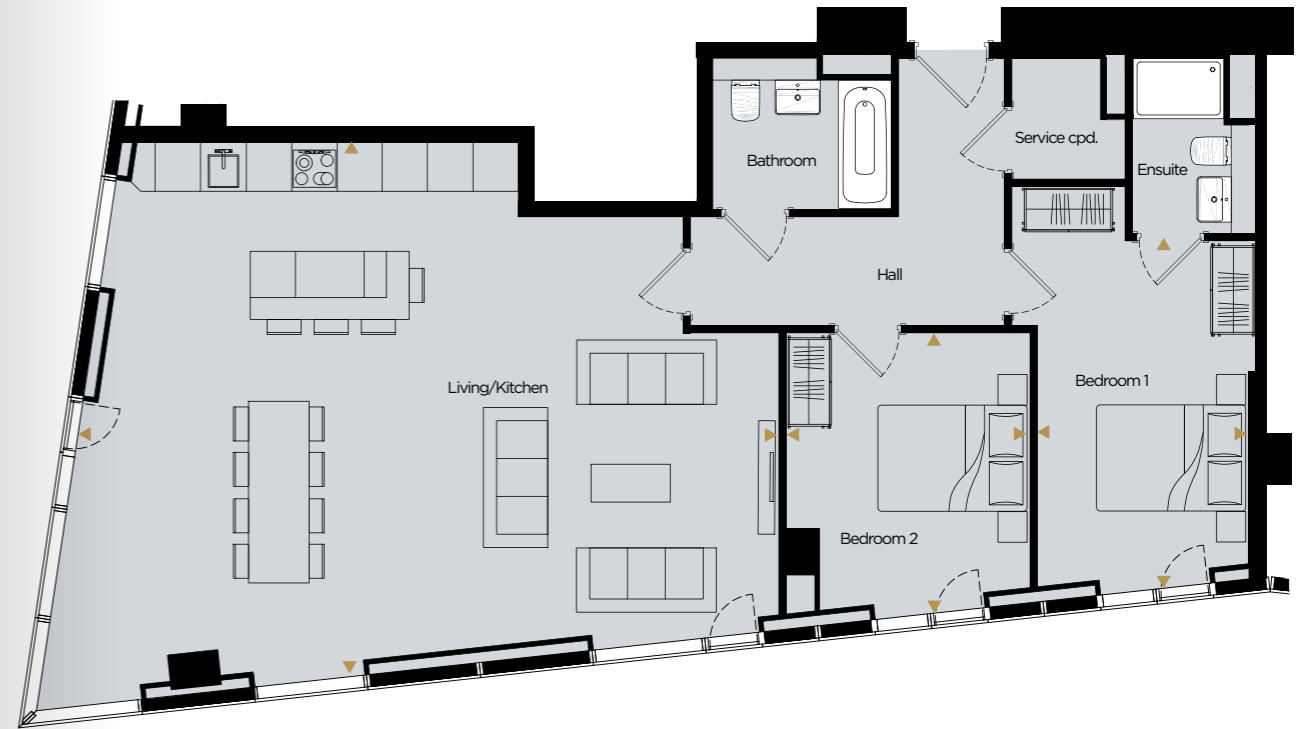
Please note that the position of the purge vent doors varies from floor to floor. Please note on this page the floorplan is for all odd numbered floors. Floor plans shown for Deansgate Square are with approximate dimensions only. Each layout size may vary. All measurements may vary within a tolerance of 5% and are to the maximum room dimensions. The dimensions are not intended for use for carpet/flooring sizes, appliances or furniture. Kitchen layout is indicative only. Please ask Sales Consultant for further information.

Two Bedroom

APARTMENT | 2D.01

OVERALL:

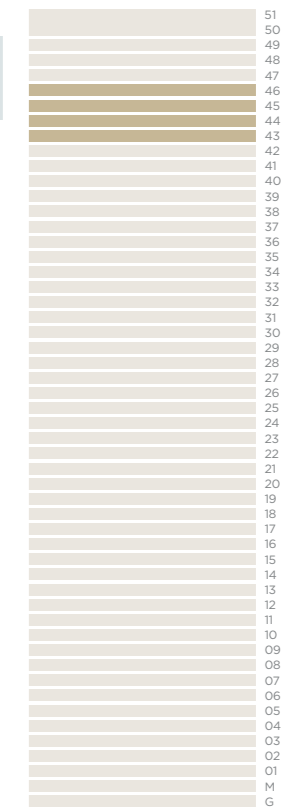
109.26 M² | 1176 FT²



SIZES	METRIC (M)	IMPERIAL
LIVING / KITCHEN	7.13 x 9.47	23'4" x 31'1"
BEDROOM 1	4.60 x 2.84	15'1" x 9'3"
BEDROOM 2	3.71 x 3.17	12'2" x 10'4"

Dimensions are taken from the points indicated ◀ ▶

LEVEL	APT NO
	43.05
	44.05
	45.05
	46.05



Please note that the position of the purge vent doors varies from floor to floor. Please note on this page the floorplan is for all odd numbered floors. Floor plans shown for Deansgate Square are with approximate dimensions only. Each layout size may vary. All measurements may vary within a tolerance of 5% and are to the maximum room dimensions. The dimensions are not intended for use for carpet/flooring sizes, appliances or furniture. Kitchen layout is indicative only. Please ask Sales Consultant for further information.

Two Bedroom

APARTMENT | 2D.02

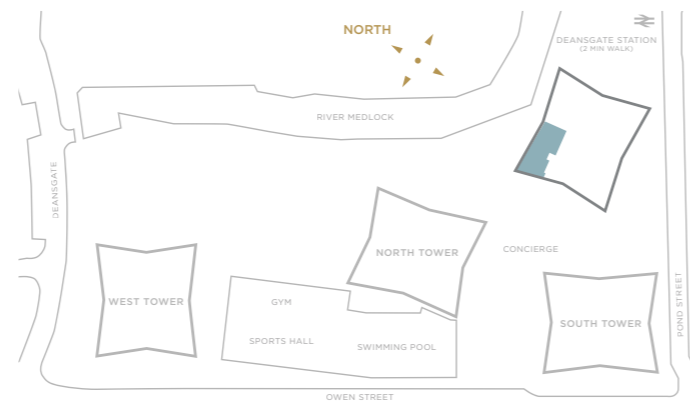
OVERALL:

110.38 M² | 1188 FT²



SIZES	METRIC (M)	IMPERIAL
LIVING / KITCHEN	7.13 x 9.47	23'4" x 31'1"
BEDROOM 1	4.60 x 2.84	15'1" x 9'3"
BEDROOM 2	3.71 x 3.17	12'2" x 10'4"

Dimensions are taken from the points indicated ◀ ▶



Please note that the position of the purge vent doors varies from floor to floor. Please note on this page the floorplan is for all even numbered floors. Floor plans shown for Deansgate Square are with approximate dimensions only. Each layout size may vary. All measurements may vary within a tolerance of 5% and are to the maximum room dimensions. The dimensions are not intended for use for carpet/flooring sizes, appliances or furniture. Kitchen layout is indicative only. Please ask Sales Consultant for further information.

Three Bedroom

APARTMENT | 3A.01

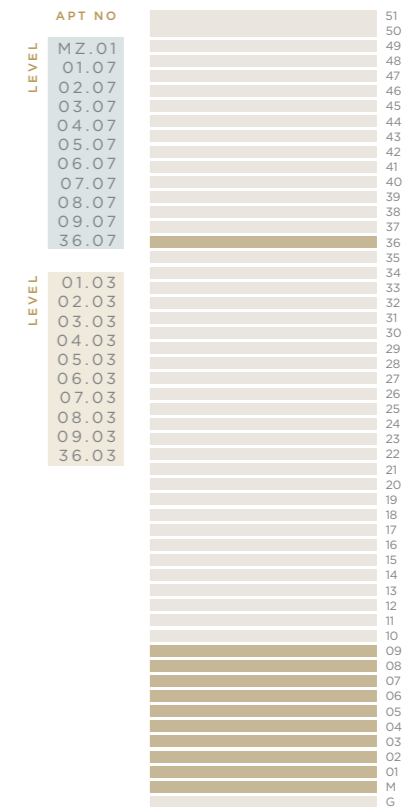
OVERALL:

106.88 M² | 1150 FT²



SIZES	METRIC (M)	IMPERIAL
LIVING / KITCHEN	7.14 x 6.49	23'5" x 21'3"
BEDROOM 1	4.61 x 2.80	15'1" x 9'2"
BEDROOM 2	3.64 x 2.77	11'11" x 9'1"
BEDROOM 3	4.00 x 2.82	13'1" x 9'3"

Dimensions are taken from the points indicated ◀ ▶

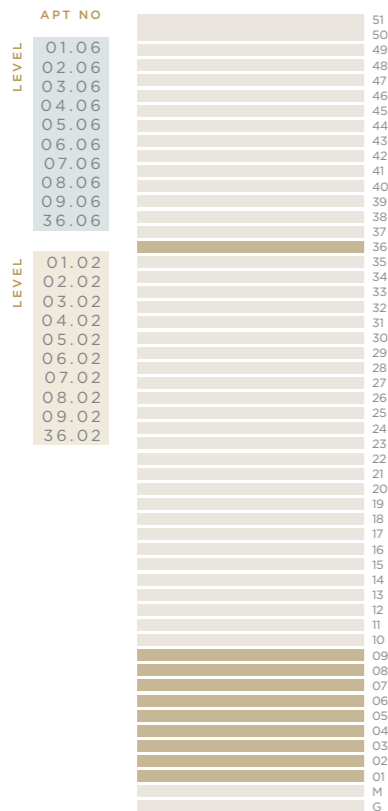


Please note that the position of the purge vent doors varies from floor to floor. Please note on this page the floorplan is for all even numbered floors. Floor plans shown for Deansgate Square are with approximate dimensions only. Each layout size may vary. All measurements may vary within a tolerance of 5% and are to the maximum room dimensions. The dimensions are not intended for use for carpet/flooring sizes, appliances or furniture. Kitchen layout is indicative only. Please ask Sales Consultant for further information.

Three Bedroom

APARTMENT | 3A.02

OVERALL:
106.05 M² | 1142 FT²



SIZES	METRIC (M)	IMPERIAL
LIVING / KITCHEN	7.14 x 6.49	23'5" x 21'3"
BEDROOM 1	4.61 x 2.80	15'1" x 9'2"
BEDROOM 2	3.64 x 2.77	11'11" x 9'1"
BEDROOM 3	4.00 x 2.82	13'1" x 9'3"

Dimensions are taken from the points indicated ◀ ▶



Please note that the position of the purge vent doors varies from floor to floor. Please note on this page the floorplan is for all odd numbered floors. Floor plans shown for Deansgate Square are with approximate dimensions only. Each layout size may vary. All measurements may vary within a tolerance of 5% and are to the maximum room dimensions. The dimensions are not intended for use for carpet/flooring sizes, appliances or furniture. Kitchen layout is indicative only. Please ask Sales Consultant for further information.

Three Bedroom

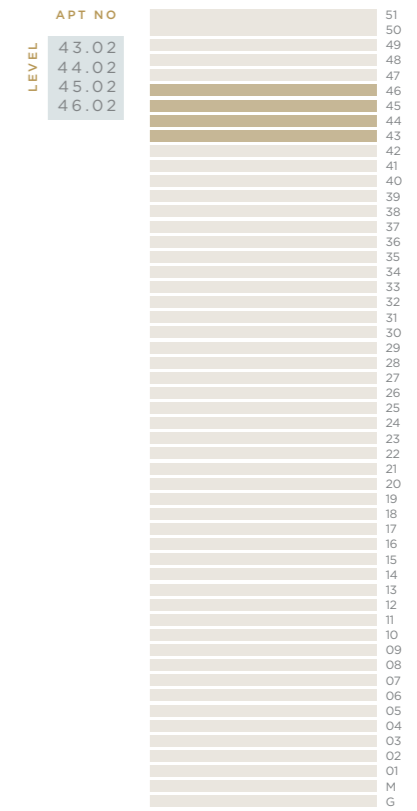
APARTMENT | 3A.05

OVERALL:
167.09 M² | 1799 FT²



SIZES	METRIC (M)	IMPERIAL
LIVING / KITCHEN	9.31 x 6.91	30'6" x 22'8"
BEDROOM 1	3.55 x 4.67	11'8" x 15'3"
DRESSING	2.59 x 4.80	8'6" x 15'8"
BEDROOM 2	5.98 x 3.10	19'7" x 10'2"
BEDROOM 3	4.96 x 3.39	16'3" x 11'1"

Dimensions are taken from the points indicated ◀ ▶

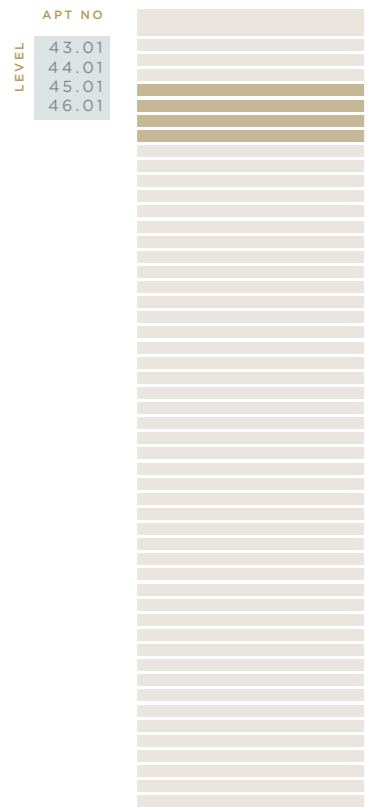
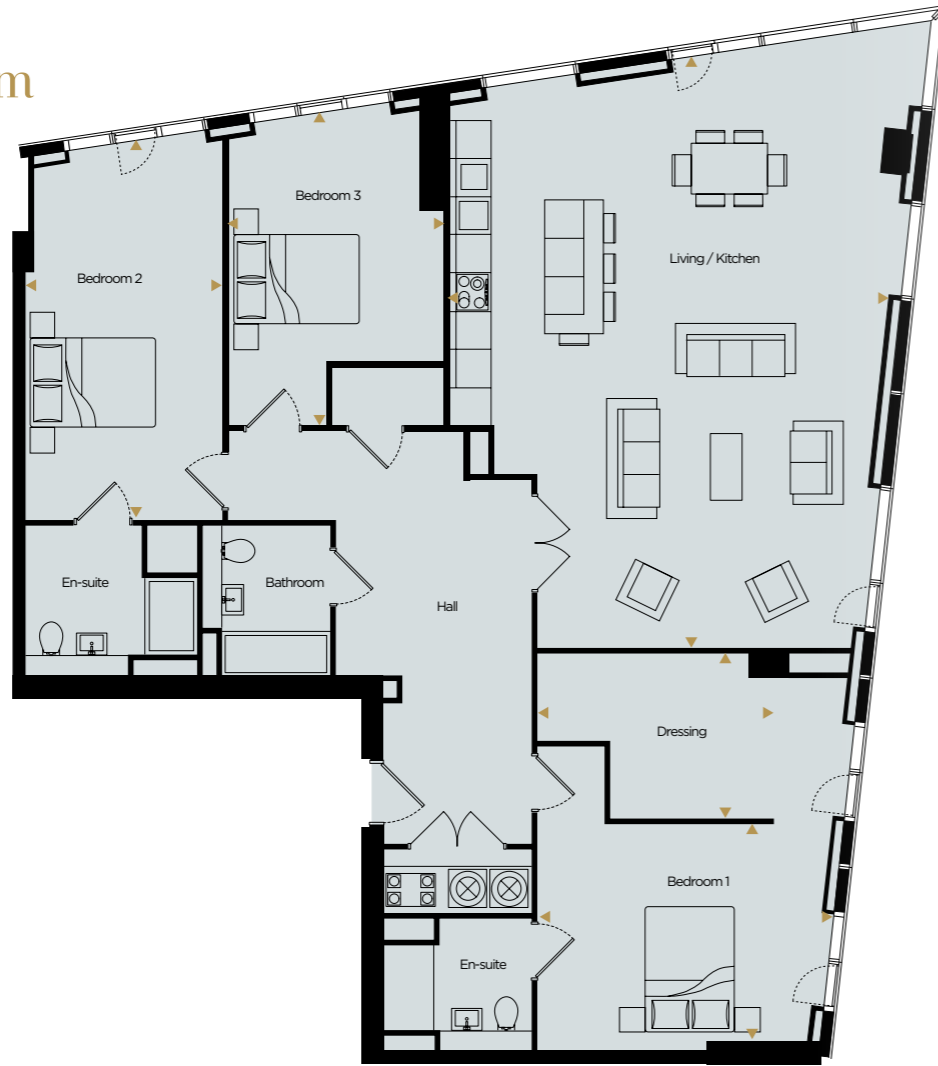


Please note that the position of the purge vent doors varies from floor to floor. Please note on this page the floorplan is for all odd numbered floors. Floor plans shown for Deansgate Square are with approximate dimensions only. Each layout size may vary. All measurements may vary within a tolerance of 5% and are to the maximum room dimensions. The dimensions are not intended for use for carpet/flooring sizes, appliances or furniture. Kitchen layout is indicative only. Please ask Sales Consultant for further information.

Three Bedroom

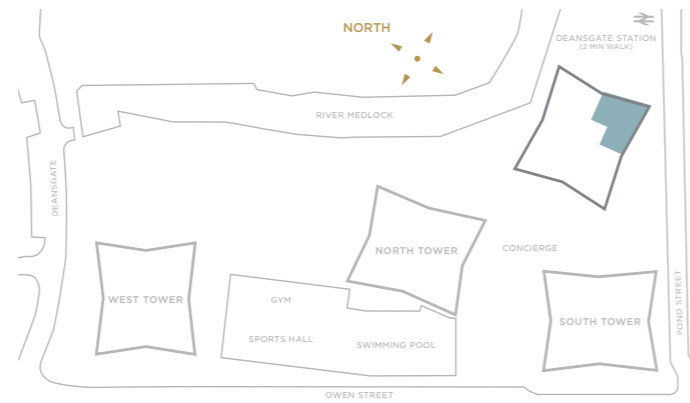
APARTMENT | 3A.06

OVERALL:
166.87 M²
1796 FT²



SIZES	METRIC (M)	IMPERIAL
LIVING / KITCHEN	9.31 x 6.91	30'6" x 22'8"
BEDROOM 1	3.55 x 4.67	11'8" x 15'3"
DRESSING	2.59 x 4.80	8'6" x 15'8"
BEDROOM 2	5.98 x 3.10	19'7" x 10'2"
BEDROOM 3	4.96 x 3.39	16'3" x 11'1"

Dimensions are taken from the points indicated ◀ ▶

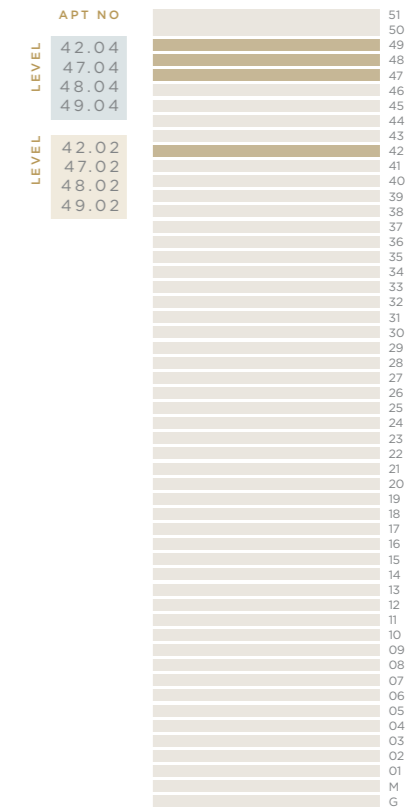


Please note that the position of the purge vent doors varies from floor to floor. Please note on this page the floorplan is for all even numbered floors. Floor plans shown for Deansgate Square are with approximate dimensions only. Each layout size may vary. All measurements may vary within a tolerance of 5% and are to the maximum room dimensions. The dimensions are not intended for use for carpet/flooring sizes, appliances or furniture. Kitchen layout is indicative only. Please ask Sales Consultant for further information.

Three Bedroom

APARTMENT | 3B.01

OVERALL:
166.87 M² | **1796 FT²**



SIZES	METRIC (M)	IMPERIAL
LIVING / KITCHEN	7.12 x 9.30	23'4" x 30'6"
BEDROOM 1	4.89 x 3.41	16'1" x 11'2"
DRESSING	3.72 x 2.65	12'2" x 8'8"
BEDROOM 2	2.89 x 6.00	9'5" x 19'8"
BEDROOM 3	3.53 x 3.58	11'7" x 11'9"

Dimensions are taken from the points indicated ◀ ▶



Please note that the position of the purge vent doors varies from floor to floor. Please note on this page the floorplan is for all odd numbered floors. Floor plans shown for Deansgate Square are with approximate dimensions only. Each layout size may vary. All measurements may vary within a tolerance of 5% and are to the maximum room dimensions. The dimensions are not intended for use for carpet/flooring sizes, appliances or furniture. Kitchen layout is indicative only. Please ask Sales Consultant for further information.

Three Bedroom

APARTMENT | 3B.02

OVERALL:

167.09 M² | 1799 FT²



Penthouses

APT NO	LEVEL
42.01	49
47.01	48
48.01	47
49.01	46
	45
	44
	43
	42
	41
	40
	39
	38
	37
	36
	35
	34
	33
	32
	31
	30
	29
	28
	27
	26
	25
	24
	23
	22
	21
	20
	19
	18
	17
	16
	15
	14
	13
	12
	11
	10
	09
	08
	07
	06
	05
	04
	03
	02
	01
	M
	G

SIZES	METRIC (M)	IMPERIAL
LIVING / KITCHEN	7.12 x 9.30	23'4" x 30'6"
BEDROOM 1	4.89 x 3.41	16'1" x 11'2"
DRESSING	3.72 x 2.65	12'2" x 8'8"
BEDROOM 2	2.89 x 6.00	9'5" x 19'8"
BEDROOM 3	3.53 x 3.58	11'7" x 11'9"

Dimensions are taken from the points indicated ◀ ▶



Please note that the position of the purge vent doors varies from floor to floor. Please note on this page the floorplan is for all even numbered floors. Floor plans shown for Deansgate Square are with approximate dimensions only. Each layout size may vary. All measurements may vary within a tolerance of 5% and are to the maximum room dimensions. The dimensions are not intended for use for carpet/flooring sizes, appliances or furniture. Kitchen layout is indicative only. Please ask Sales Consultant for further information.

Penthouse

THE PANKHURST

OVERALL:

289.72 M² | 3119 FT²

SIZES	METRIC (M)	IMPERIAL
LIVING / KITCHEN	10.76 x 15.64	35'3" x 51'4"
STUDY / OFFICE	3.01 x 4.91	9'11" x 16'1"
BEDROOM 1	5.13 x 4.41	16'10" x 14'5"
BEDROOM 2	3.49 x 5.52	11'5" x 18'1"
VIEWING ROOM	2.88 x 3.96	9'5" x 13'0"
BEDROOM 3	3.32 x 6.55	10'11" x 21'5"

Dimensions are taken from the points indicated ◀ ▶



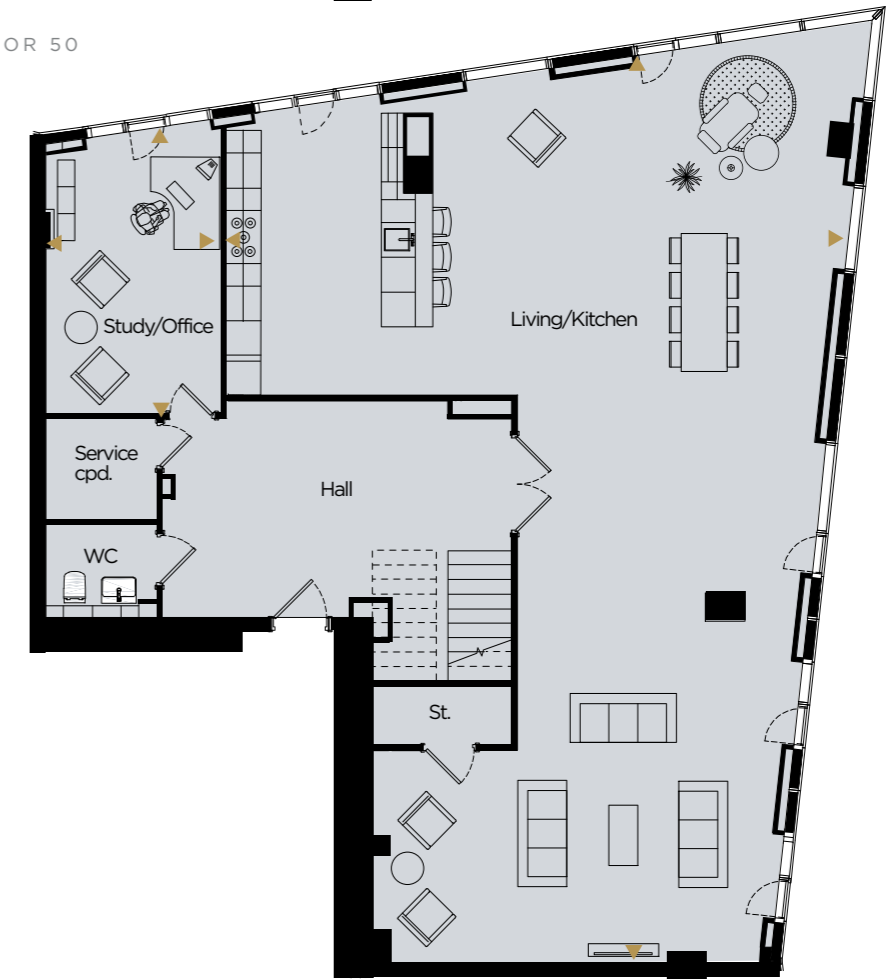
Penthouses do not come dressed, for illustrative purposes only.



FLOOR 51



FLOOR 50



Floor plans shown for Deansgate Square are with approximate dimensions only. Each layout size may vary. All measurements may vary within a tolerance of 5% and are to the maximum room dimensions. The dimensions are not intended for use for carpet/flooring sizes, appliances or furniture. Kitchen layout is indicative only. Please ask Sales Consultant for further information.

Floor plans shown for Deansgate Square are with approximate dimensions only. Each layout size may vary. All measurements may vary within a tolerance of 5% and are to the maximum room dimensions. The dimensions are not intended for use for carpet/flooring sizes, appliances or furniture. Kitchen layout is indicative only. Please ask Sales Consultant for further information.

Penthouse

THE TURING

OVERALL:

290.35 M² | 3125 FT²

SIZES	METRIC (M)	IMPERIAL
LIVING / KITCHEN	10.76 x 15.64	35'3" x 51'4"
STUDY / OFFICE	3.01 x 4.91	9'11" x 16'1"
BEDROOM 1	5.13 x 4.41	16'10" x 14'5"
BEDROOM 2	3.49 x 5.52	11'5" x 18'1"
VIEWING ROOM	2.88 x 3.96	9'5" x 13'0"
BEDROOM 3	3.32 x 6.55	10'11" x 21'5"

Dimensions are taken from the points indicated ◀ ▶



Penthouses do not come dressed, for illustrative purposes only.



FLOOR 51



FLOOR 50



Floor plans shown for Deansgate Square are with approximate dimensions only. Each layout size may vary. All measurements may vary within a tolerance of 5% and are to the maximum room dimensions. The dimensions are not intended for use for carpet/flooring sizes, appliances or furniture. Kitchen layout is indicative only. Please ask Sales Consultant for further information.

Floor plans shown for Deansgate Square are with approximate dimensions only. Each layout size may vary. All measurements may vary within a tolerance of 5% and are to the maximum room dimensions. The dimensions are not intended for use for carpet/flooring sizes, appliances or furniture. Kitchen layout is indicative only. Please ask Sales Consultant for further information.

Penthouse

THE ENGELS

OVERALL:

290.43 M² | 3126 FT²

SIZES	METRIC (M)	IMPERIAL
LIVING / KITCHEN	10.76 x 15.64	35'3" x 51'4"
STUDY / OFFICE	3.01 x 4.91	9'11" x 16'1"
BEDROOM 1	5.13 x 4.41	16'10" x 14'5"
BEDROOM 2	3.49 x 5.52	11'5" x 18'1"
VIEWING ROOM	2.88 x 3.96	9'5" x 13'0"
BEDROOM 3	3.32 x 6.55	10'11" x 21'5"

Dimensions are taken from the points indicated ◀ ▶



Penthouses do not come dressed, for illustrative purposes only.



Floor plans shown for Deansgate Square are with approximate dimensions only. Each layout size may vary. All measurements may vary within a tolerance of 5% and are to the maximum room dimensions. The dimensions are not intended for use for carpet/flooring sizes, appliances or furniture. Kitchen layout is indicative only. Please ask Sales Consultant for further information.

Floor plans shown for Deansgate Square are with approximate dimensions only. Each layout size may vary. All measurements may vary within a tolerance of 5% and are to the maximum room dimensions. The dimensions are not intended for use for carpet/flooring sizes, appliances or furniture. Kitchen layout is indicative only. Please ask Sales Consultant for further information.

Penthouse

THE GASKELL

OVERALL:

299.93 M² | 3228 FT²

SIZES	METRIC (M)	IMPERIAL
LIVING / KITCHEN	10.76 x 15.64	35'3" x 51'4"
STUDY / OFFICE	3.01 x 4.91	9'11" x 16'1"
BEDROOM 1	5.13 x 4.41	16'10" x 14'5"
BEDROOM 2	3.49 x 5.52	11'5" x 18'1"
VIEWING ROOM	2.88 x 3.96	9'5" x 13'0"
BEDROOM 3	3.32 x 6.55	10'11" x 21'5"

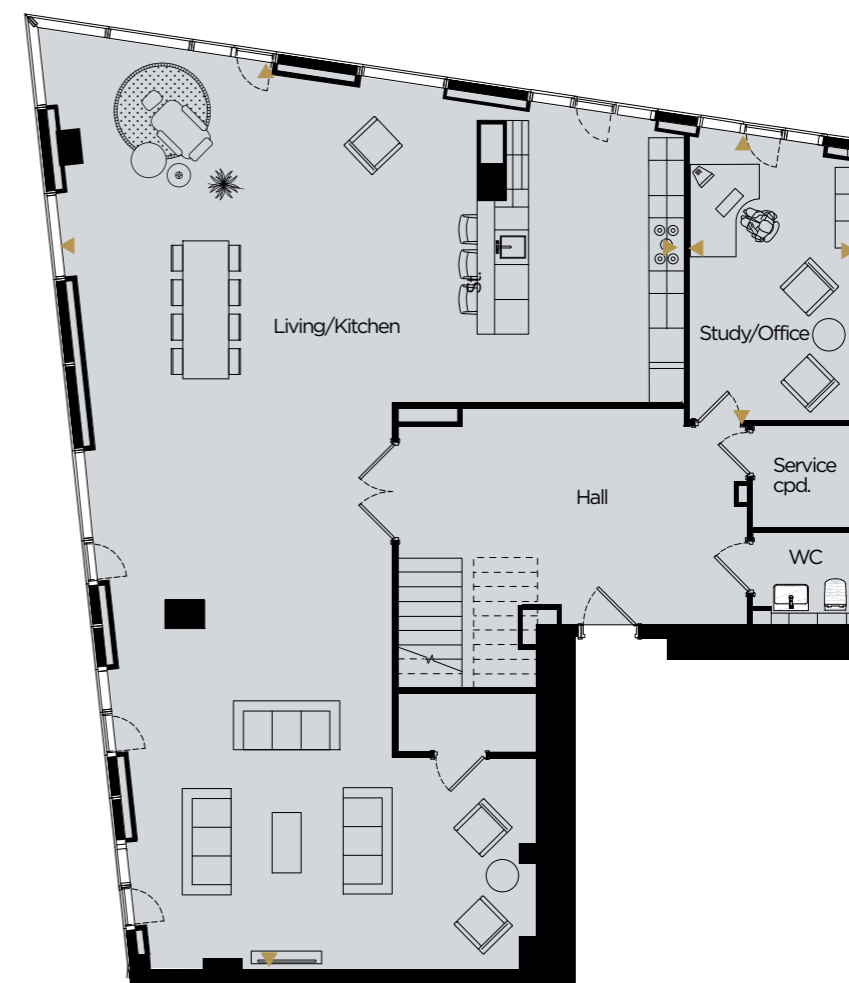
Dimensions are taken from the points indicated ◀ ▶



Penthouses do not come dressed, for illustrative purposes only.



FLOOR 51



FLOOR 50

Floor plans shown for Deansgate Square are with approximate dimensions only. Each layout size may vary. All measurements may vary within a tolerance of 5% and are to the maximum room dimensions. The dimensions are not intended for use for carpet/flooring sizes, appliances or furniture. Kitchen layout is indicative only. Please ask Sales Consultant for further information.

Floor plans shown for Deansgate Square are with approximate dimensions only. Each layout size may vary. All measurements may vary within a tolerance of 5% and are to the maximum room dimensions. The dimensions are not intended for use for carpet/flooring sizes, appliances or furniture. Kitchen layout is indicative only. Please ask Sales Consultant for further information.



RENAKER

THE NORTH WEST'S LEADING PROPERTY DEVELOPER

IN COMING TOGETHER, ITS BUSINESS LEADERS DRAW UPON A UNIQUE BLEND OF COMPLEMENTARY SKILLS GAINED FROM DECADES OF EXPERIENCE WITHIN LEADING INDUSTRY ORGANISATIONS.

Renaker is now firmly established as the North West's leading property developer with a proven track record in design, build and delivery with more than 4000 new homes currently under construction.

Renaker has a unique and refreshing approach, operating with honesty and integrity in a straightforward manner which receives a positive response from all stakeholders.

We firmly believe that for the business to be successful, we must operate in a forward-thinking manner, be responsive to change and to be able to act quickly. Throughout the business, we adopt a "can do" attitude delivering sustainable new communities in an enthusiastic and efficient manner.

Our vision is to transform the urban landscape, unlocking potential and delivering quality schemes which encourage a sense of community and are attuned to the needs of the end user.

Sustainability is always a key consideration and, from the early stages of the planning process, we ensure that longevity is built in: meeting not just the needs of today but the demands of tomorrow. We deliver what we promise.

RENAKER



MARKETING SUITE:
Great Jackson Street, Manchester M15 4PA

CALL: 0161 711 0605
(+44 161 711 0605)

EMAIL: hello@deansgatesquare.co.uk
OPEN: 7 days a week 10am - 5pm

HOW TO FIND THE MARKETING SUITE:

From Manchester head out of the city on Deansgate which will then turn into the A56 Chester Road. Go past Atlas Bar on your left and The Knott on your right, before taking your second left onto Great Jackson Street. The marketing suite is situated 150 yards down the road on the right.

From the A57(M) Mancunian Way (North) come off at the A56 Altrincham/Trafford Park junction. Go around the roundabout and take the third exit - as if getting back onto the Ring Road. Immediately stay in the left hand lane and take the second left onto Garwood Street. Take a left onto Great Jackson Street and follow the road until you see the marketing suite on your left.

From Princess Road head north into the city on Medlock Street. With Home on your right hand side, turn left onto City Road East. Follow this road round for approx 400 yards, and you will find the marketing suite on your left hand side.

Deansgate

S Q U A R E

A N E W L E V E L



The information in this document is indicative and is intended to act as a guide only as to the finished product. Accordingly due to Renaker's policy of continuous improvement the finished product may vary from the information provided. These particulars should not be relied upon as statements of fact or representations. This information does not constitute a contract or warranty. Applicants are advised to contact Renaker to ascertain the availability of any particular property. All computer images are indicative only.

Floor plans shown for Deansgate Square are with approximate dimensions only. Each layout size may vary. All measurements may vary within a tolerance of 5% and are to the maximum room dimensions. The dimensions are not intended for use for carpet/flooring sizes, appliances or furniture. Kitchen layout is indicative only. Please ask Sales Consultant for further information. August 2021.