



SOUTH TOWER

Deansgate

S Q U A R E

A NEW LEVEL

DEANSGATE SQUARE

a new level

SOUTH
TOWER

Contents.

THE DEVELOPMENT	6 - 7
THE VISION	8 - 9
DEVELOPMENT MAP	10 - 11
MANCHESTER	
THE GUIDE	12 - 19
LOCATION	20 - 25
HEALTH & WELLNESS	
THE CLUB	26 - 39
LIFESTYLE & SERVICES	
THE TEA ROOM	40 - 41
THE SALON	42 - 43
THE ROOF GARDEN	44 - 47
THE CONCIERGE	48 - 49
THE GALLERY	50 - 53
THE SQUARE	54 - 55
THE APARTMENTS	
INTERIORS	56 - 61
VIEWS	62 - 63
SPECIFICATIONS	64 - 69
APARTMENT LOCATOR	70 - 72
FLOORPLANS	73 - 109
THE DEVELOPER	110 - 111

Reaching new heights.

Comprising 1,508 spacious apartments across four carefully designed towers, Deansgate Square is Manchester's premier new development. Marrying luxury living with unrivalled private on-site amenities, all in an iconic location at the heart of one of the world's best-known cities.

Every element has been carefully crafted, ensuring that every need is considered. From the outset, our team of designers have factored in all the key aspects for iconic modern living - and much more. Covering 22,000 ft² the Deansgate Square development has a level of amenity unmatched with anywhere else in the UK. Comprising a pool, gymnasium, sports hall, spa, lounge, business gallery and rooftop garden.

Deansgate Square takes city centre living in Manchester to a new level.

And with its enviable location in the heart of the city, the possibilities are endless.

Deansgate

S Q U A R E

Architect's Vision

DEANSGATE SQUARE COMPRISES A COLLECTION OF FOUR RESIDENTIAL TOWERS TOGETHER WITH A STANDALONE AMENITY BUILDING FOR RESIDENTS USE ONLY, 25,000 SQ FT OF COMMERCIAL SPACE AND SECURE UNDERGROUND PARKING.

THE TOWERS ARE EXPRESSED AS A COHESIVE SCULPTURAL GROUPING, SITUATED NEXT TO THE RIVER MEDLOCK AND AT THE GATEWAY TO THE CITY CENTRE. THEY ARE THE FIRST IN A SERIES OF DEVELOPMENTS THAT FORM THE WIDER GREAT JACKSON STREET MASTERPLAN VISION.



The architectural expression of the buildings is deliberately restrained and is repeated across all four towers, creating a cluster of strong, elegant silhouettes. Care has been taken to ensure that a refined and slender profile is introduced to the Manchester skyline.

The verticality of the towers has been emphasised through two subtle moves. Each face of each tower is indented creating a vertical crease which breaks down each surface into two narrower planes. Adjacent faces of the towers receive subtle contrasting colour tones, silver grey and anthracite, intended to pick out the crisp vertical lines of the four corners of each building.

The detailed design of the building façades comprises a uniform pattern of coloured, fritted and clear double glazed unitised panels, creating a dynamic animated façade which responds to shifting viewpoints and changing environmental conditions.

Ian Simpson
simpsonhaugh

The arrangement of the four towers has been carefully considered whereby the shadows cast by the towers move away from the public space created at their base by mid-afternoon. Essential to create an appealing public space.

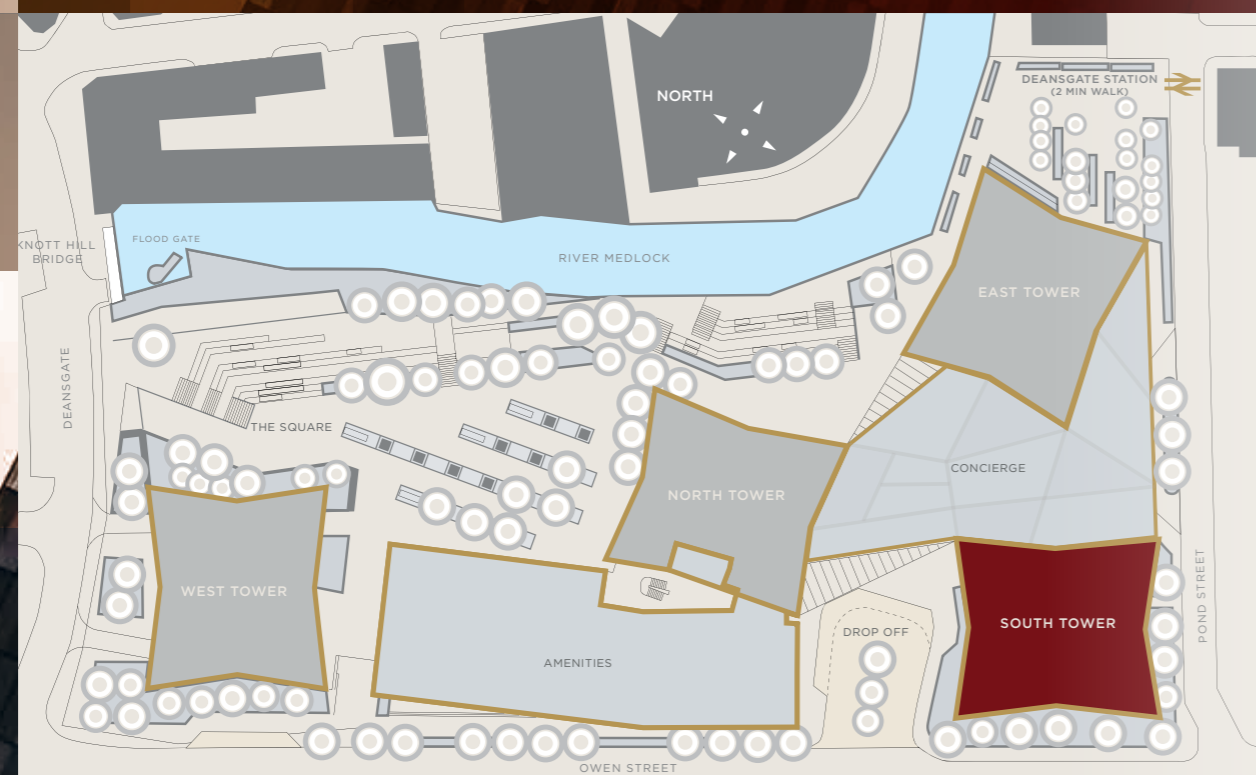
The development is situated adjacent to the River Medlock, with the river walk forming part of a terraced landscaped arrangement connecting the Plaza with the river edge. The terraces are arranged to relate directly to it, offering viewing opportunities both up and down river.

Deansgate Square includes significant new areas of landscaped space and public realm, creating a rich groundscape that dramatically improves the quality of both public and private environments to support the delivery of the wider Great Jackson Street Masterplan vision. The Square, accommodating food and retail units, is designed to be a flexible space to cater for varying size of events and will create a destination for the development and the wider city.

The South Tower

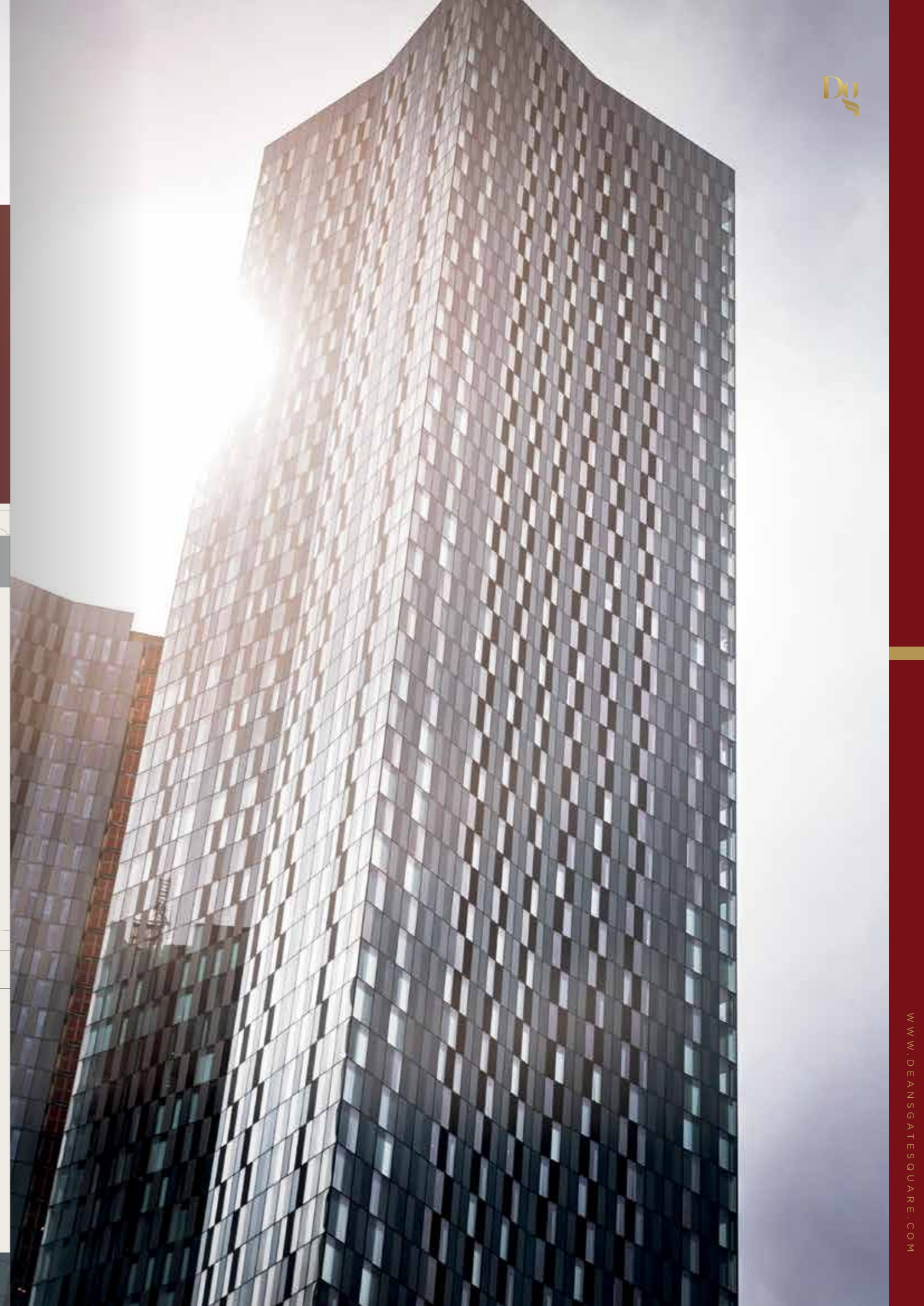
65 STOREYS 496 APARTMENTS

Not only is Deansgate Square perfectly placed to explore Manchester and beyond - it benefits from its own community hub. The Club can be reached in under a minute from each of the iconic towers, plus a range of retail options all located within the development's boundary.



SITE PLAN

- SOUTH TOWER 496 apartments
- EAST TOWER 386 apartments
- NORTH TOWER 276 apartments
- WEST TOWER 350 apartments



Endless possibilities. Countless stories.

At the foot of Deansgate, the central artery running through the heart of Manchester, Deansgate Square not only gives stunning views across this popular, ever-growing metropolis, but is also ideally situated for exploring the city and everything it has to offer.

Manchester. Living.

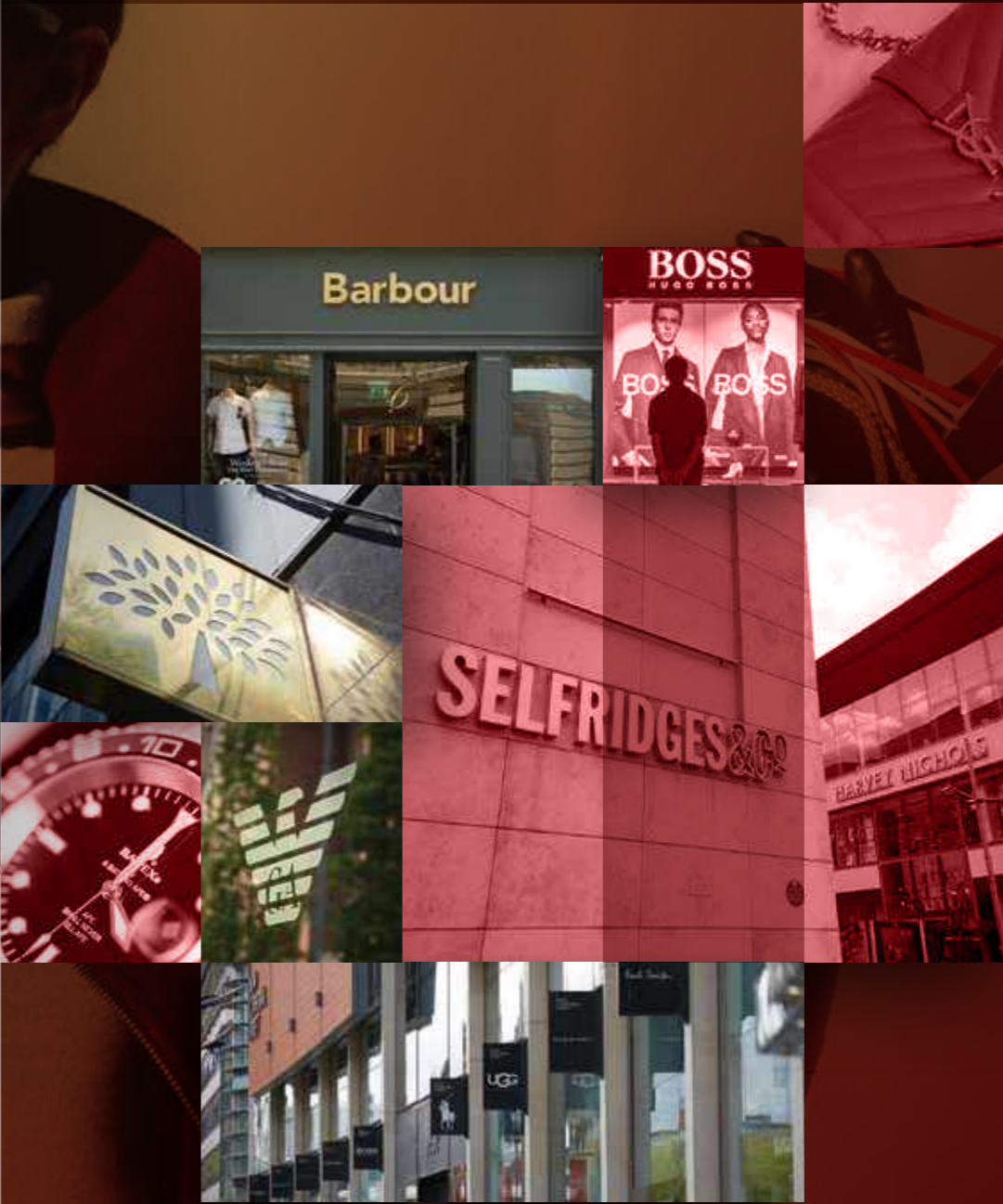
Tasty nights out.

Manchester has become well-known for its culinary culture. Home to an eclectic mix of eateries, the city offers everything from Michelin-starred high cuisine, through to the latest in hip street food pop-ups.



Shop. Chic.

With its very own style and swagger, Manchester offers a wide variety of sensational shopping for the fashion conscious. Whether you are looking for designer stores, the UK's favourite high-street retailers or artisan independents, there is something for everyone located on almost every street in the city.



Education.

Deansgate Square is more than just an impressive place to live, it offers many great opportunities for you and your family to learn and grow in one of the UK's, Europe's and the wider world's best education hubs.



Manchester offers a plethora of quality schools and world-leading higher education establishments that you and your family will be able to access as residents at Deansgate Square.

Ofsted ratings for both state primary and secondary schools in the region invariably range from 'Good' to 'Outstanding', with impressive pass rates and record numbers of students going onto further academic study.

Manchester city centre is also home to one of Europe's largest student populations across its 3 universities:

- Manchester University
 - Manchester Metropolitan University
 - The University of Salford
- plus
- Northern Ballet School
 - Royal Northern College of Music



TRAVELLING TIMES

UNIVERSITY OF MANCHESTER

20 mins
 4 mins
 8 mins

MANCHESTER METROPOLITAN UNIVERSITY

12 mins
 4 mins
 3 mins

UNIVERSITY OF SALFORD

32 mins
 8 mins
 12 mins

ROYAL NORTHERN COLLEGE OF MUSIC

19 mins
 5 mins
 7 mins

NORTHERN BALLET SCHOOL

13 mins
 4 mins
 4 mins



- 1 DUKES 92
- 2 CASTLEFIELD BOWL
- 3 THE KNOTT
- 4 ATLAS BAR
- 5 THE COMEDY STORE
- 6 REVOLUTION
- 7 LOLA LO
- 8 INDIAN TIFFIN ROOM
- 9 ODEON CINEMA
- 10 WOOD
- 11 GORILLA
- 12 CLOUD 23
- 13 IMPOSSIBLE
- 14 ALBERT'S SCHLOSS
- 15 BREWDOG
- 16 20 STORIES
- 17 THE IVY
- 18 TATTU
- 19 THE REFINERY
- 20 SAN CARLO

- BUSINESS DISTRICT
- PLACES OF INTEREST

Well connected.

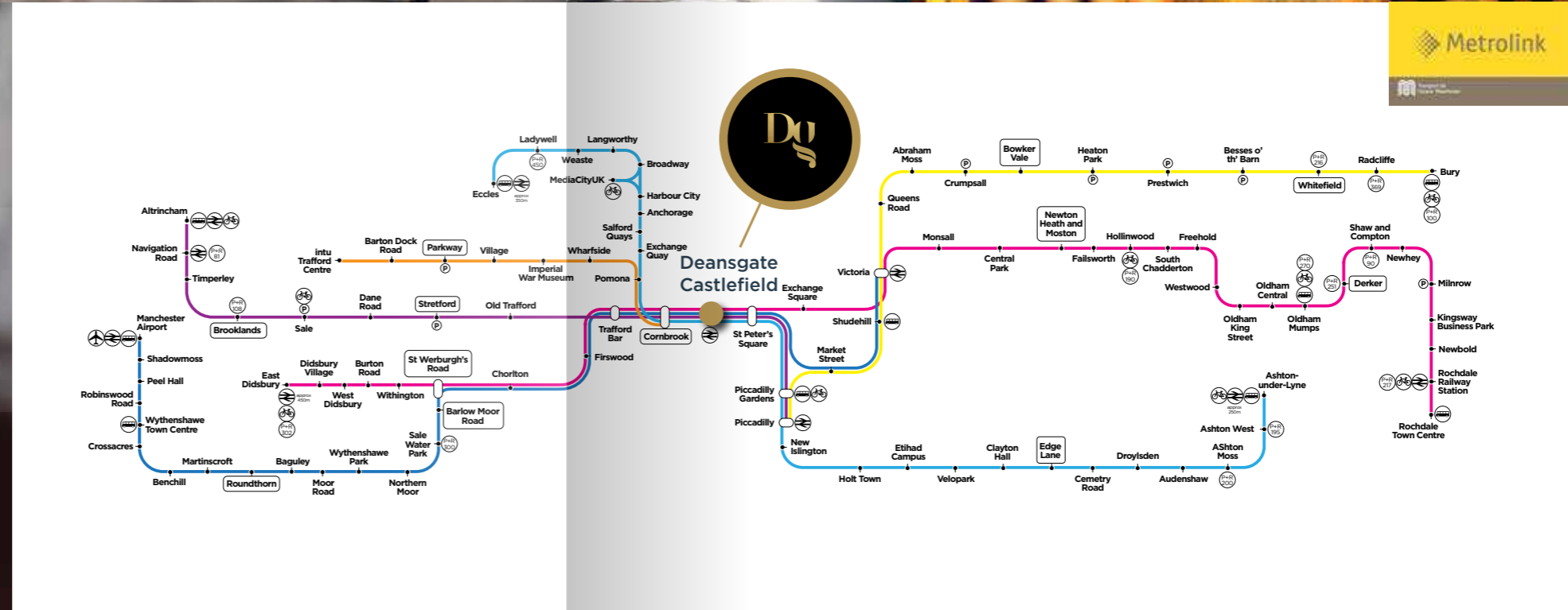
LOCAL TRANSPORT

Deansgate Square offers a wealth of nearby transport connections that can see you make the most of everything in the local area and further afield. Whether it's the city's tram network, bus routes or trains, you can easily access everything Manchester has to offer in terms of top venues, attractions and public spaces. In addition, the rest of the UK is also within touching distance courtesy of Manchester's three major train stations. Moreover, the upcoming HS2 rail network will offer journeys to the capital in 67 minutes*.

*HS2 data from HS2.org.uk

METROLINK

Deansgate Square is perfectly positioned for all the Metrolink lines as well as National Rail services.



Hello to luxury.

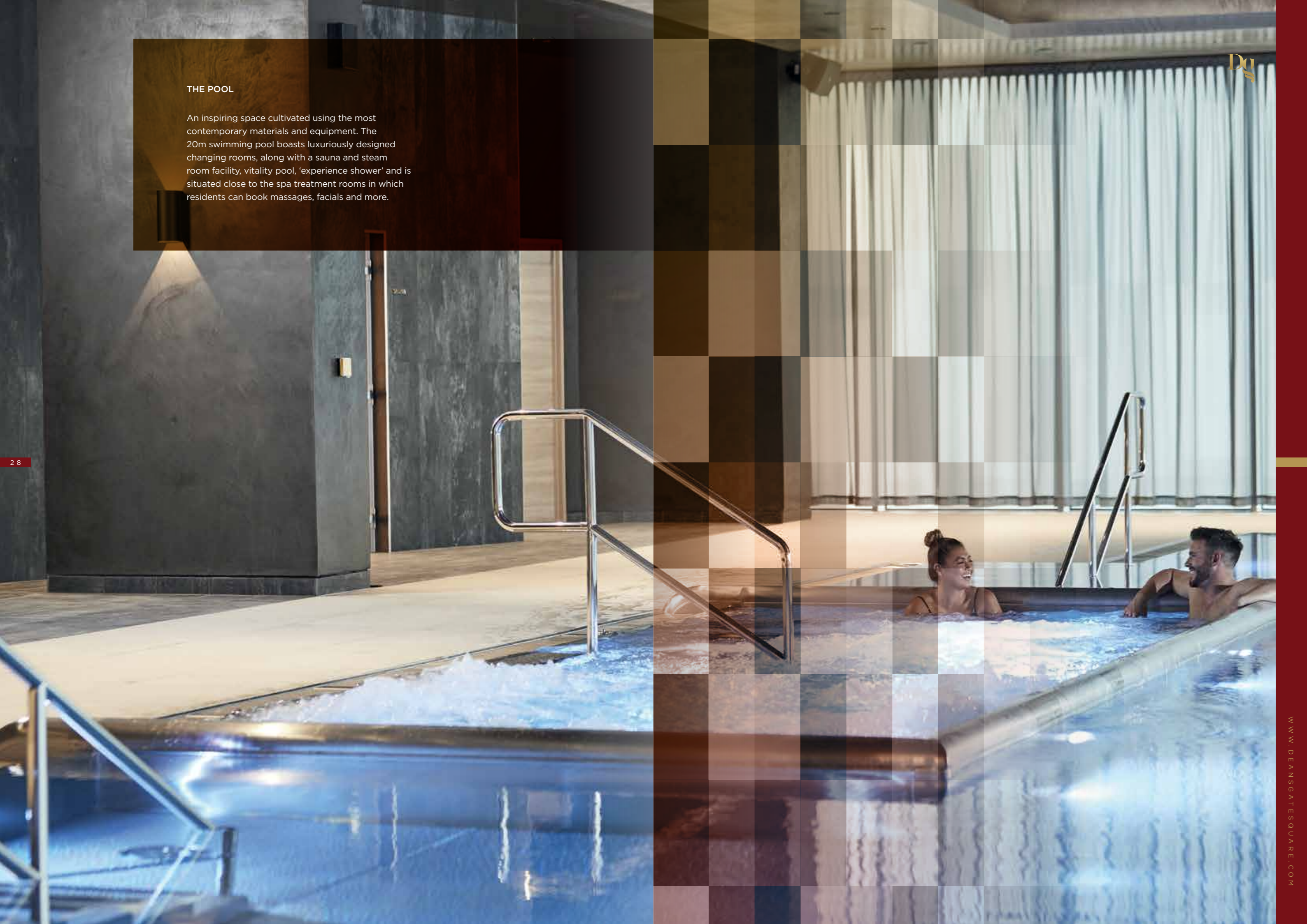
THE CLUB

The Club has a level of amenity unmatched anywhere else in the UK, comprising:

- 20M SWIMMING POOL
- VITALITY POOL
- SAUNA
- STEAM ROOM
- SPA TREATMENT ROOMS (INCLUDING NAIL BAR)
- RESIDENTS' CHANGING FACILITIES
- 6000 ft² SPORTS HALL (TENNIS, 5-A-SIDE FOOTBALL, BASKETBALL)
- 4300 ft² GYMNASIUM
- 1130 ft² SPIN STUDIO
- 1100 ft² YOGA / AEROBIC STUDIO
- ROOFTOP GARDEN
- PRIVATE SALON (ABILITY TO HIRE FOR PRIVATE EVENTS)

THE POOL

An inspiring space cultivated using the most contemporary materials and equipment. The 20m swimming pool boasts luxuriously designed changing rooms, along with a sauna and steam room facility, vitality pool, 'experience shower' and is situated close to the spa treatment rooms in which residents can book massages, facials and more.



Health & Wellness.

Our health and wellness team includes everyone from personal trainers to sports rehabilitation specialists, ensuring The Club is accessible to all residents.



THE GYMNASIUM

The gymnasium situated over two floors, boasts state-of-the-art technology which allows residents to access a connective wellness experience via bespoke training programmes. Residents can benefit from regular live classes from qualified instructors as part of a curated daily timetable as well as booking personal 1-2-1 training sessions.



YOGA STUDIO

The yoga studio is a tranquil space, equipped with ambient circadian lighting and a virtual instructor, walking residents through their flow from a screen.



SPIN STUDIO

The spin studio provides the perfect environment to join like-minded members in a group indoor cycling class.

A state-of-the-art Wexer creates virtual digital fitness solutions with more than 1,000 fitness videos and exercises. Complete with a professional sound system and multi-coloured lighting, designed to enhance the user experience.



SPORTS HALL

A first for living in Manchester, with its bright pink floor, the 6,000 ft² sports hall is available for hire for a variety of different sports, including 5-a-side football, basketball and tennis.

The Club.

MEZZANINE FLOOR PLAN

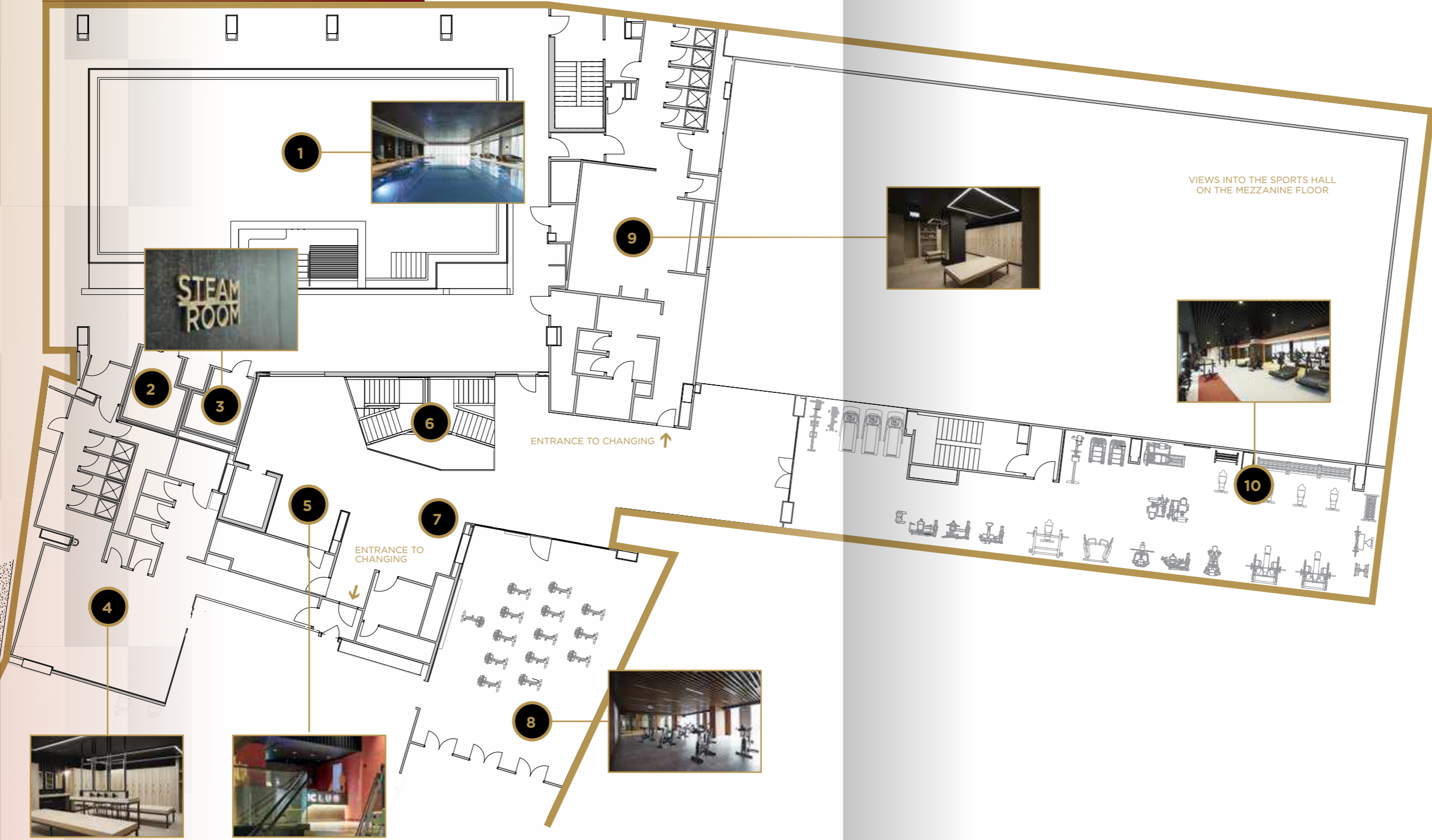
- 1 YOGA/AEROBIC STUDIO
- 2 TREATMENT ROOM 1
- 3 TREATMENT ROOM 2
- 4 NAIL BAR
- 5 STAIRS TO ALL LEVELS
- 6 SPORTS HALL
- 7 TREATMENT ROOM RECEPTION
- 8 GYMNASIUM



m

The Club.

FLOOR 1 PLAN



- 1 SWIMMING POOL
- 2 SAUNA
- 3 STEAM ROOM
- 4 FEMALE CHANGING
- 5 THE CLUB RECEPTION
- 6 STAIRS TO ALL LEVELS
- 7 LOUNGE AREA
- 8 SPIN STUDIO
- 9 MALE CHANGING
- 10 GYMNASIUM

1

Relax. Unwind.

THE TEA ROOM

From the sounds residents hear to the aromas they smell, careful consideration has been given to create a tranquil yet captivating space.

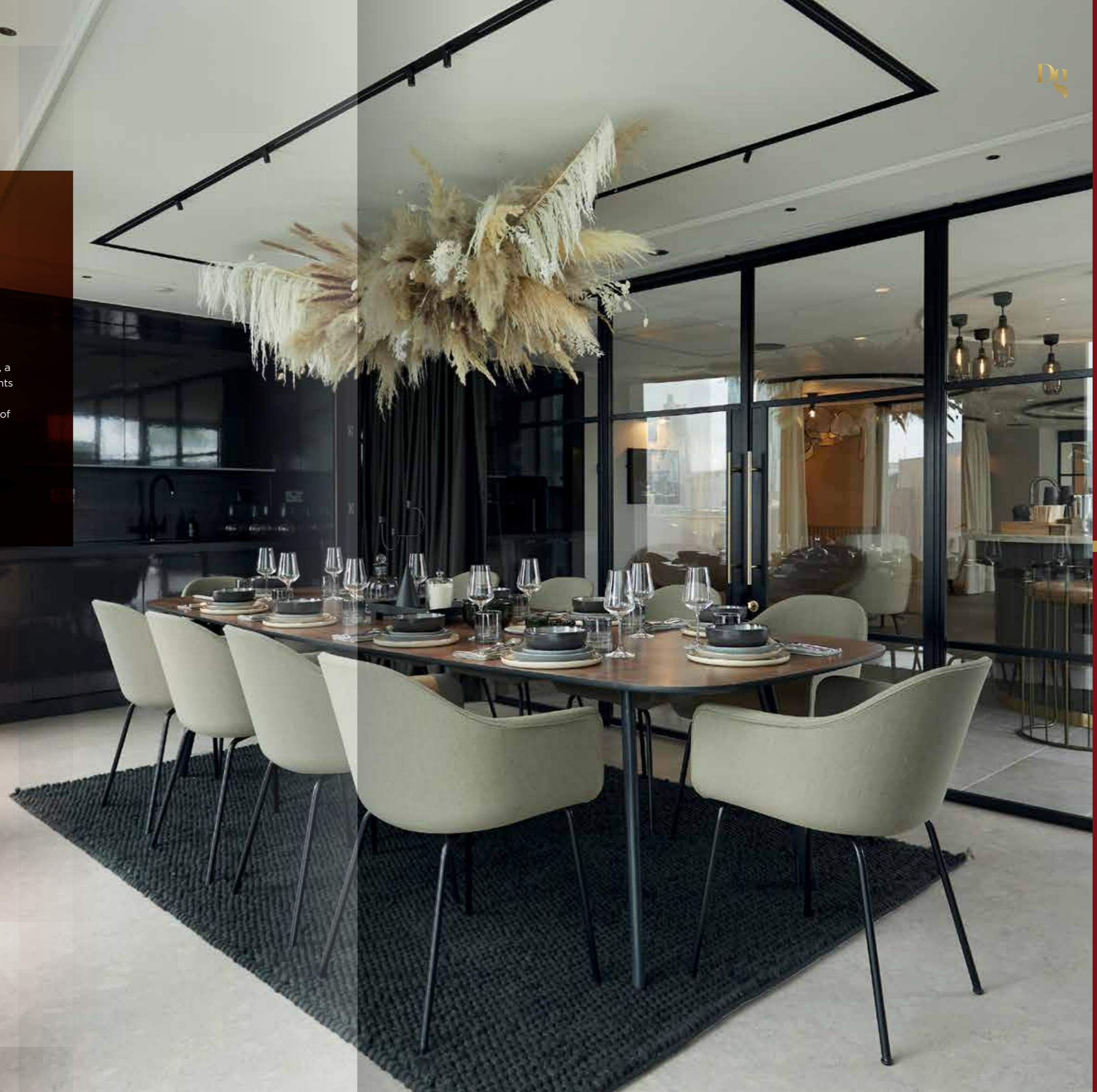
The Tea Room, eclectic and richly designed and with direct access onto the rooftop garden, offers a comfortable space for catching up with fellow residents and friends, or relaxing and reading the Sunday papers, with a subtle nod to that British classic, a cup of tea.



Dine. Enjoy.

THE SALON

Adjoining to the Tea Room is The Salon, a private dining room available for residents to hire out for entertaining with friends or business colleagues, with the option of hiring a private chef.



The great outdoors.

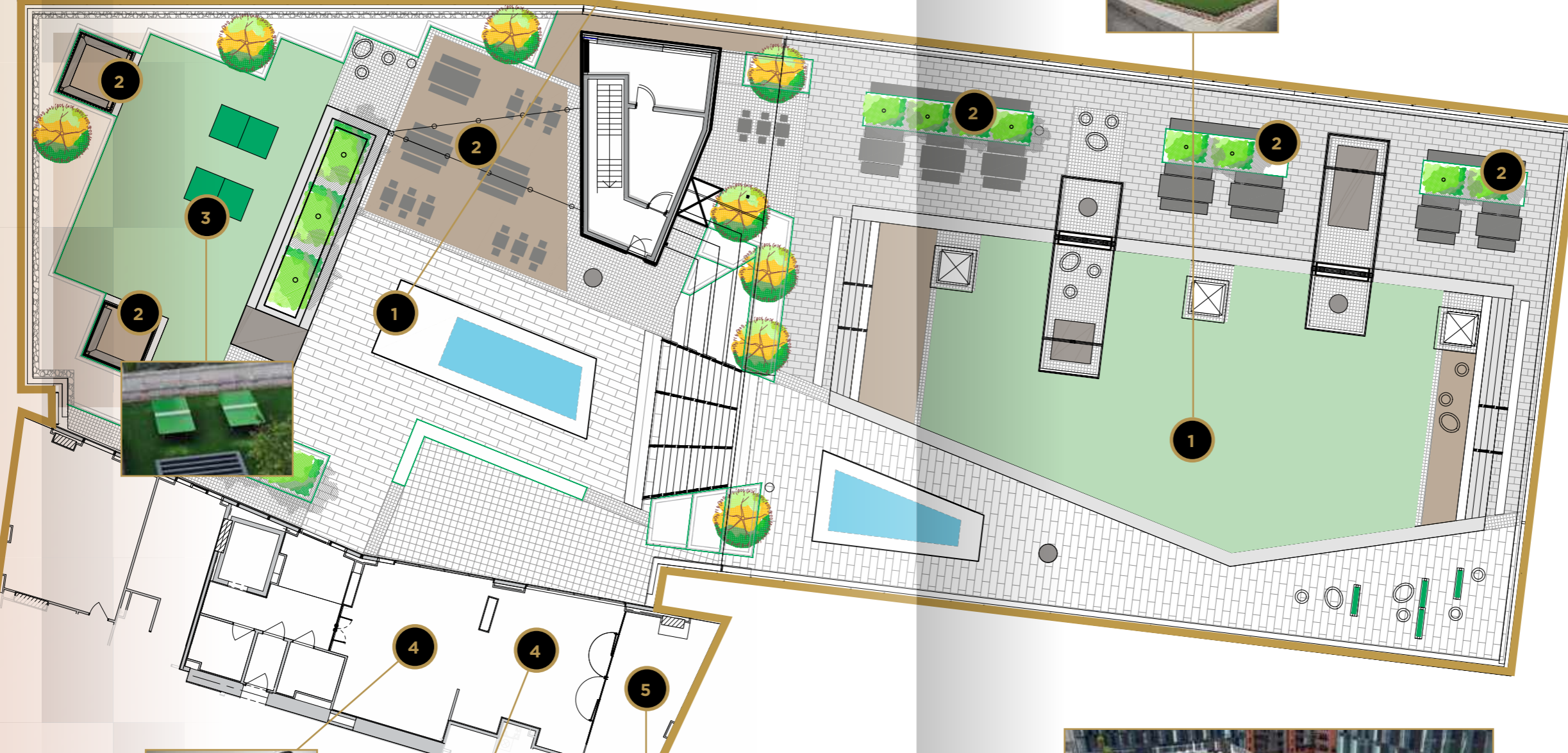
THE ROOFTOP GARDEN

Offering a place to relax outdoors, in beautifully landscaped luxury, the roof garden not only provides the perfect place to enjoy the outdoors but also affords great views across the city centre.

The Rooftop Garden.

FLOOR 3 PLAN

- 1 GARDEN
- 2 OUTDOOR SEATING
- 3 TABLE TENNIS
- 4 THE TEA ROOM
- 5 THE SALON



3

At your service.

THE CONCIERGE

The main concierge further adds to the opulence of the development. A huge skylight takes centre stage and provides a focal point for residents and guests alike. The materials used throughout the concierge areas have been carefully selected and lovingly crafted to provide a truly bespoke environment.



AVAILABLE 24/7



DEDICATED RESIDENTS' DROP OFF / PICK UP POINT



CENTRAL HUB



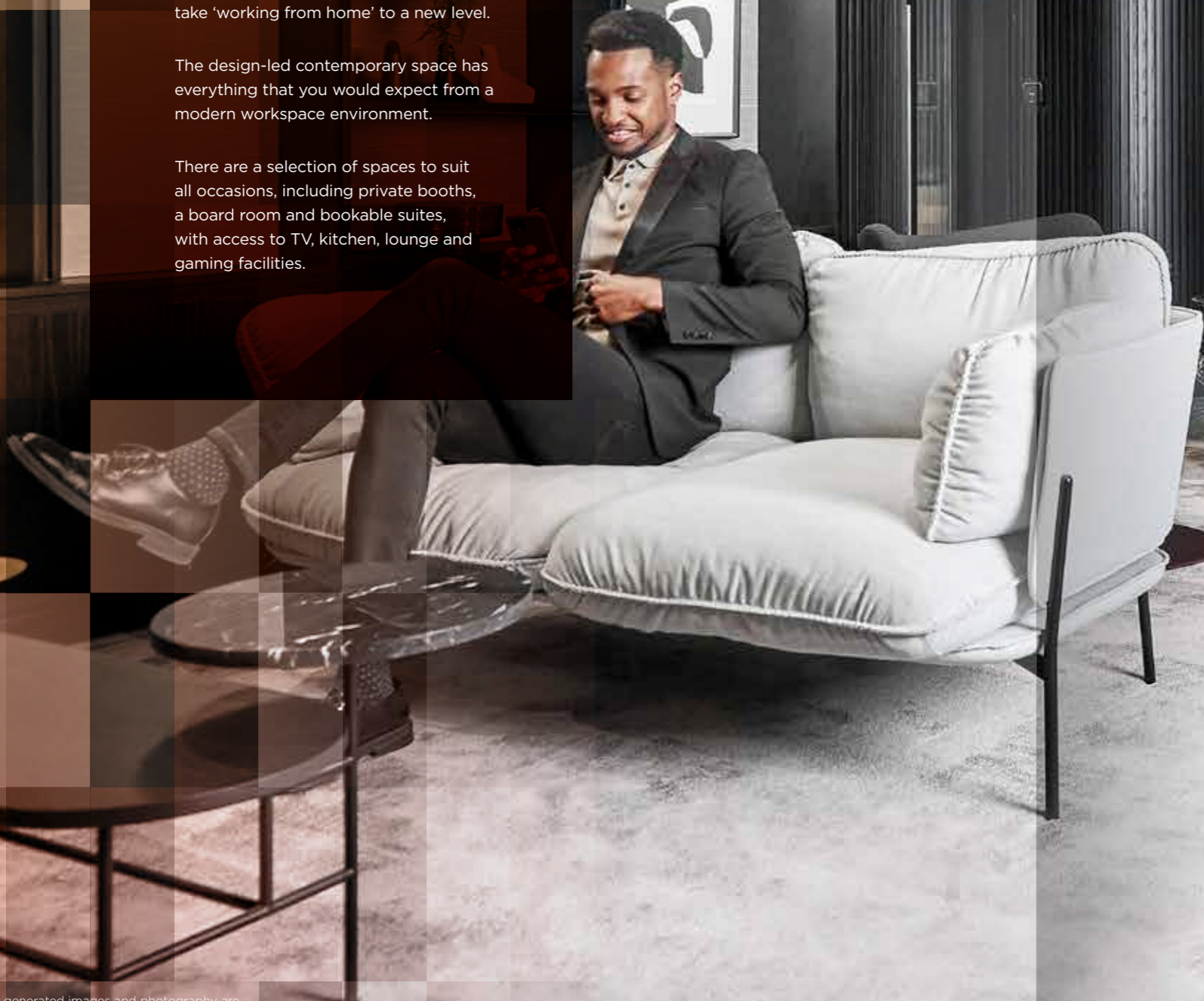
An office out of the office.

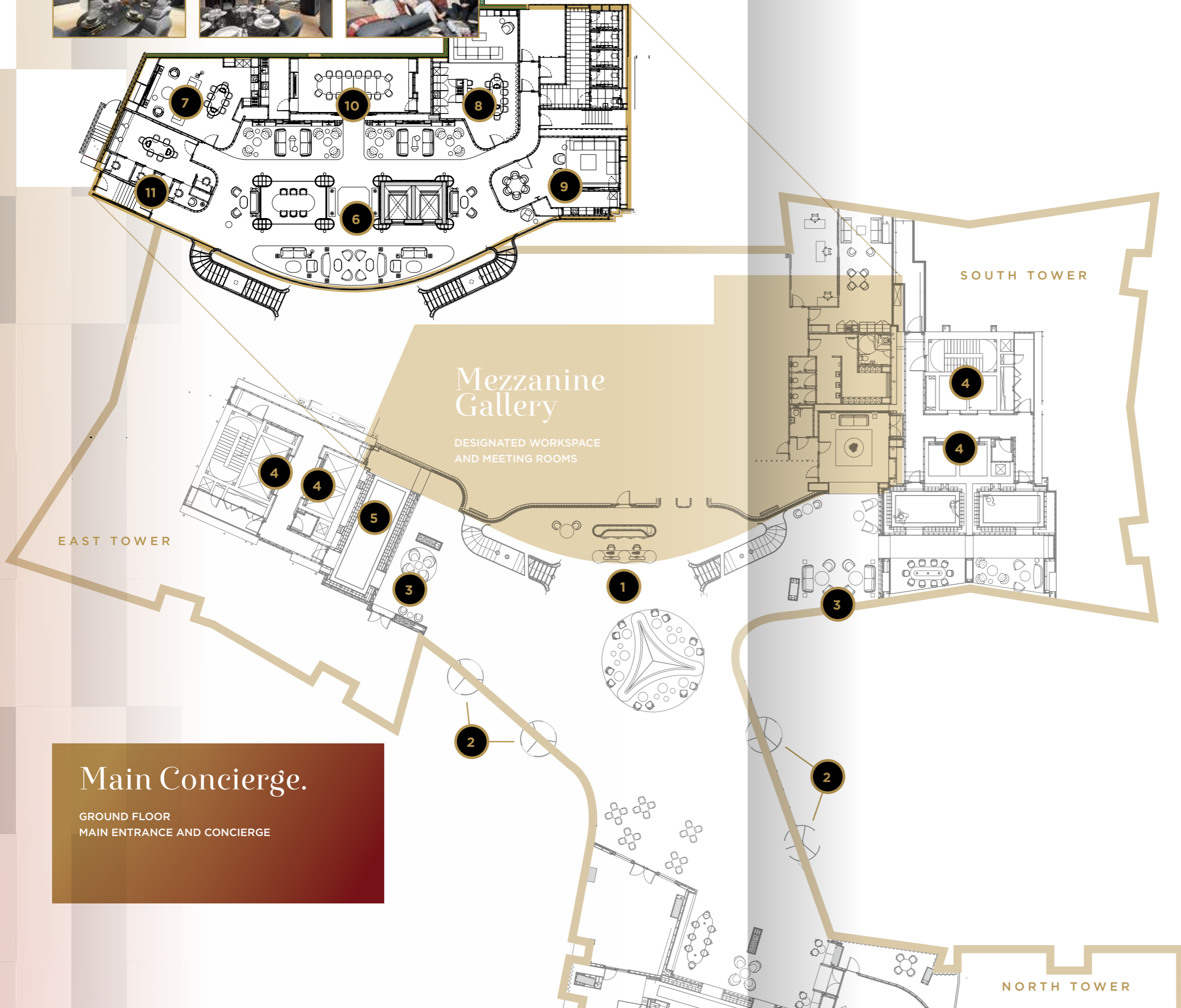
THE GALLERY

The business gallery, situated over the main concierge, offers a peaceful and professional environment to take 'working from home' to a new level.

The design-led contemporary space has everything that you would expect from a modern workspace environment.

There are a selection of spaces to suit all occasions, including private booths, a board room and bookable suites, with access to TV, kitchen, lounge and gaming facilities.





- 1 CONCIERGE
- 2 ENTRANCE X4
- 3 LOUNGE
- 4 LIFTS
- 5 MAIL BOXES
- 6 CO-WORKING SPACE
- 7 BOOKABLE SUITE NO.1
- 8 BOOKABLE SUITE NO.2
- 9 BOOKABLE SUITE NO.3
- 10 THE BOARDROOM
- 11 PRIVATE INDIVIDUAL BOOTHS

Main Concierge.
 GROUND FLOOR
 MAIN ENTRANCE AND CONCIERGE



Convenience on your doorstep.

THE SQUARE

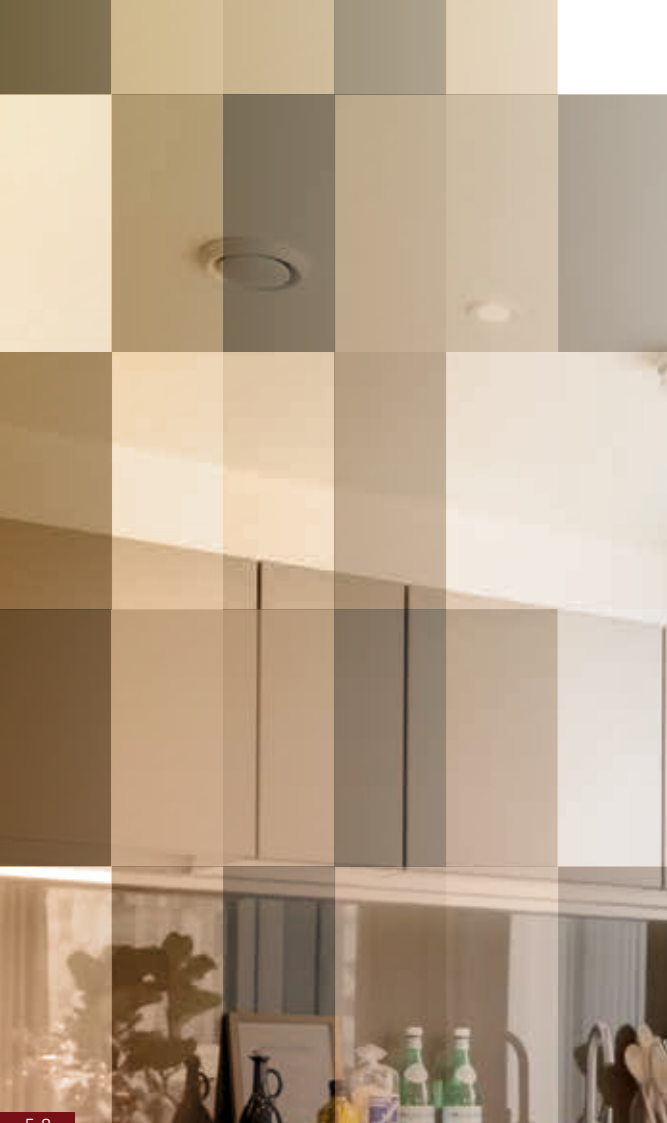
Retail spaces will contribute to the amenity provision across the development. A curatorial approach has been taken to select independent local operators to create a stimulating retail environment for residents to enjoy including a general store, bar, cafe and more.

The Square, which overlooks the River Medlock, part of the development, will also host events sealing it as new destination in Manchester.

Interiors.

APARTMENTS

Each carefully designed living space offers you unparalleled views across the city centre and beyond, with full height windows allowing you to relax and enjoy the view. Plus, with the latest soundproofing technology, you can be safe in the knowledge your luxury will be undisturbed.



LIVING

Featuring bespoke units, the modern kitchens also feature integrated appliances including: hob, oven, fridge-freezer, dishwasher and the all important wine cooler. Oak herringbone flooring adds to the overall aesthetic creating a luxurious and contemporary living space.

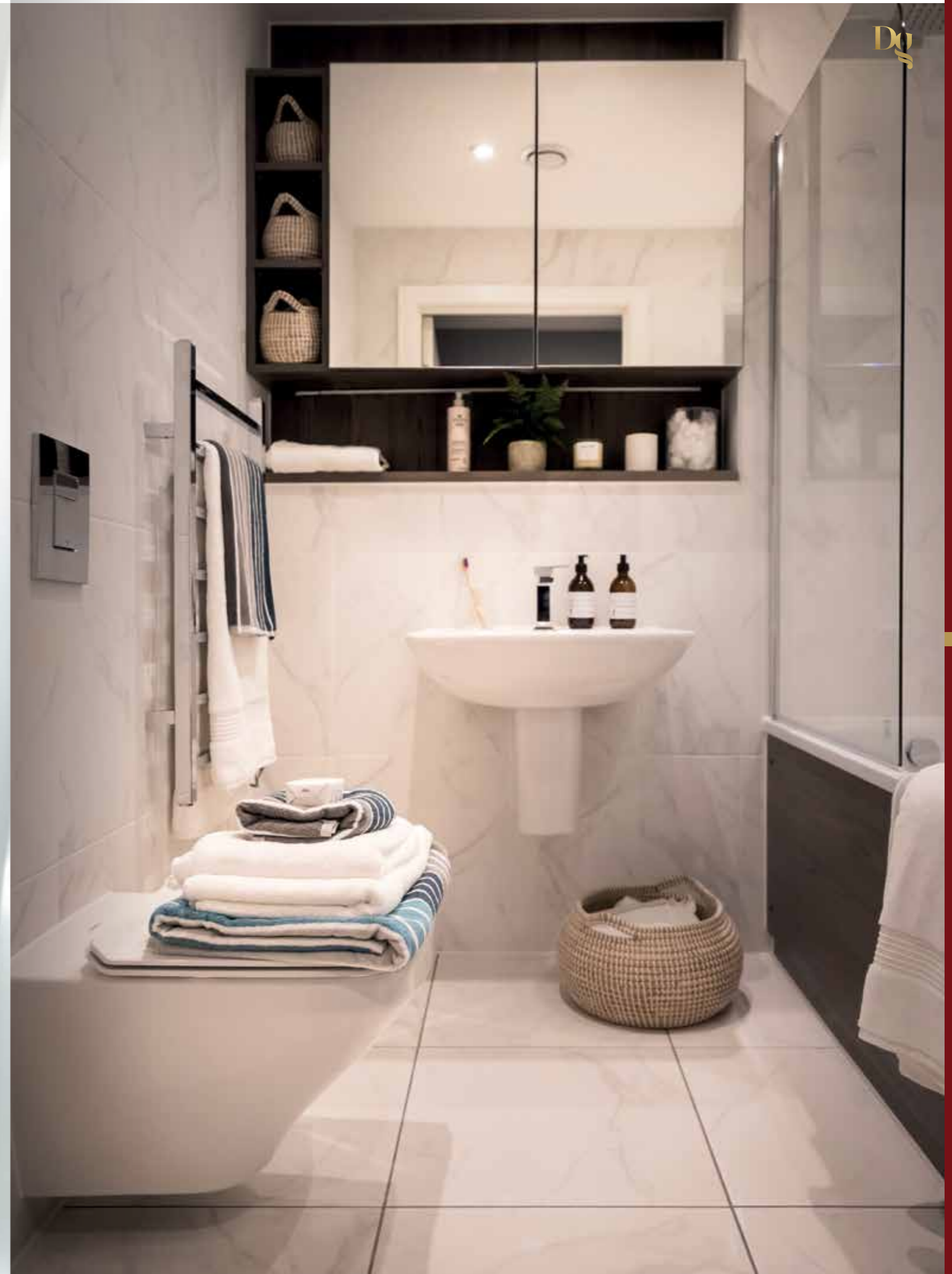
BEDROOM

Each bedroom at Deansgate Square has been designed with a good night's sleep in mind, with room for double beds, clean white walls and full-height windows. The carpet in each bedroom is from award-winning supplier Cormar, carefully selected to give you that luxury feeling each morning as soon as your feet touch the ground.



BATHROOM

Deansgate Square boasts luxury fully tiled bathrooms, perfectly partnered with stylish Duravit sanitary ware, featuring Me by Starck wash basins and Durastyle wall hung WCs with concealed cisterns and soft close seats. Bathrooms feature generously sized enamelled steel baths by Kaldewei, whilst both bathrooms and en-suites feature rainhead showers by Vado. Mood lighting is also installed to give the complete sense of luxury and relaxation in the bathroom.



NORTH

TAKEN FROM LEVEL 64



TAKEN FROM LEVEL 33

EAST



SOUTH

TAKEN FROM LEVEL 64



TAKEN FROM LEVEL 33

WEST



Apartment Specifications

INTERNAL FINISHES

- Walnut veneer apartment entrance doors and white satinwood internal doors
- Chrome ironmongery
- Satinwood finish to internal skirtings and architraves
- White emulsion to walls and ceilings

FLOORING

- Havwoods Bronzo narrow plank, engineered oak flooring in a herringbone pattern in living areas and hallways
- Cormar carpets in bedrooms
- Tiling to bathrooms, en-suites and cloakrooms

KITCHENS

- Bespoke English kitchen cabinets
- Handleless door and drawer fronts
- Composite 22mm square-edged work surfaces with full-height glass splashbacks*
- Integrated Neff touch control ceramic hob, oven and concealed re-circulating cooker hood
- Integrated Neff fridge-freezer and automatic dishwasher
- Integrated CDA wine cooler
- Underslung composite sink unit with swan neck monoblock mixer tap
- LED under unit lighting

BATHROOMS & EN-SUITES

- Duravit sanitary ware featuring Me by Starck wall hung wash basins and Durastyle wall hung WCs with concealed cisterns and soft close seats
- Kaldewei steel baths
- Vado brassware and showers
- Rainhead showers
- Glazed shower screens
- Ceramic tiled walls
- Bespoke storage with mirrored doors, built-in shaver socket and mood lighting

ELECTRICAL & COMMUNICATION

- LED downlights to hallways, living areas, bedrooms, bathrooms and en-suites
- Provision for BT, Sky Q and Virgin Media in living areas and bedrooms**
- Hyperoptic broadband (speeds of up to 1Gb)
- Brushed nickel sockets and switches throughout

HEATING

- Adax Neo slim-line electric panel heaters with central timer (in hallway)
- Chrome ladder towel rails to bathrooms and en-suites

SAFETY & SECURITY

- Secure residents' entrances with dedicated fob access to shared spaces and apartments
- Automated door entry system with video and audio streaming
- Dedicated concierge operating 24/7
- Smoke and heat detectors to kitchens and entrance halls
- Sprinkler system
- Vertical dimout blinds throughout

*For kitchen preselections please see page 68
 ** BT not available in bedrooms

The specification is the anticipated specification but may be subject to change as necessary and without notice. Any photographs or computer generated images are indicative of the quality and style of the specification and may not represent the actual fittings and furnishings at the development. Please note kitchen layouts are indicative and may be subject to change.



Penthouse Specifications

INTERNAL FINISHES

- Walnut veneer apartment entrance and internal doors to match†
- Chrome ironmongery
- Satinwood finish to internal skirtings and architraves
- White emulsion to walls and ceilings

FLOORING

- Havwoods Bronzo narrow plank, engineered oak flooring in a herringbone pattern to living areas and hallways
- Cormar carpets to bedrooms
- Tiling to bathrooms, en-suites and cloakrooms

KITCHENS

- Handleless door and drawer fronts
- Composite work surfaces
- Integrated touch control ceramic hob oven (5 ring) and concealed re-circulating cooker hood†
- Integrated fridge-freezer and automatic dishwasher
- Integrated CDA wine cooler
- Underslung composite sink unit with swan neck monoblock mixer tap
- LED under unit lighting

BATHROOMS & EN-SUITES

- Duravit sanitary ware featuring Me by Starck wall hung wash basins (double unit in Bedroom 1)†
- Durastyle wall hung WCs with concealed cisterns and soft close seats
- Kartell free standing steel baths†
- Vado brassware and showers
- Rainhead showers
- Glazed shower screens
- Ceramic tiled walls
- Bespoke storage with mirrored doors, built-in shaver socket and mood lighting

BEDROOMS

- Bespoke fitted joinery to dressing area

ELECTRICAL & COMMUNICATION

- LED downlights to hallways, living areas, bedrooms, bathrooms and en-suites
- Provision for BT, Sky Q and Virgin Media in living areas and bedrooms**
- Hyperoptic broadband (speeds up to 1Gb)
- Brushed nickel sockets and switches throughout

HEATING

- Adax Neo slim-line electric panel heaters with central timer (in hallway)
- Chrome ladder towel rails to bathrooms and en-suites
- Double hot water cylinder providing twice as much hot water†
- Cooling / Air conditioning throughout†

SAFETY & SECURITY

- Secure residents' entrances with dedicated fob access to shared spaces and apartments
- Automated door entry system with video and audio streaming
- Dedicated concierge operating 24/7
- Smoke and heat detectors to kitchens and entrance halls
- Sprinkler system
- Electric dimout roller blinds throughout (remote controlled)†



†Exclusive to Penthouses.
 ** BT not available in bedrooms

The specification is the anticipated specification but may be subject to change as necessary and without notice. Any photographs or computer generated images are indicative of the quality and style of the specification and may not represent the actual fittings and furnishings at the development. Please note kitchen layouts are indicative and may be subject to change.

Apartment Locator

TYPE	APARTMENT NUMBER	LEVEL	VIEW	TOTAL M ²	TOTAL FT ²	PAGE
ONE BEDROOM						
1A.01	MZ.01 01.01 02.01 03.01 04.01 05.01 06.01 07.01 08.01 09.01 10.01 11.01 48.01	MEZZANINE-11, 48	UNIVERSITY	55.71	599	73
1A.02	01.08 02.08 03.08 04.08 05.08 06.08 07.08 09.08 10.08 11.08 48.08	01-11, 48	UNIVERSITY	55.24	594	74
1A.03	01.04 02.04 03.04 04.04 05.04 06.04 07.04 08.04 09.04 10.04 11.04 48.04	01-11, 48	DEANSGATE SQUARE	55.80	600	75
1A.04	01.05 02.05 03.05 04.05 05.05 06.05 07.05 08.05 09.05 10.05 11.05 48.05	01-11, 48	DEANSGATE SQUARE	55.34	595	76
1B.01	12.02 13.02 14.02 15.02 16.02 17.02 18.02 19.02	12-19	OLD TRAFFORD	51.80	557	77
1B.02	12.04 13.04 14.04 15.04 16.04 17.04 18.04 19.04	12-19	OLD TRAFFORD	52.17	561	78
1B.03	12.07 13.07 14.07 15.07 16.07 17.07 18.07 19.07	12-19	DEANSGATE SQUARE	52.17	561	79
1B.04	12.09 13.09 14.09 15.09 16.09 17.09 18.09 19.09	12-19	DEANSGATE SQUARE	51.99	559	80
1C.01	12.08 13.08 14.08 15.08 16.08 17.08 18.08 19.08	12-19	CITY CENTRE	41.11	442	81
1C.02	12.03 13.03 14.03 15.03 16.03 17.03 18.03 19.03	12-19	OLD TRAFFORD	41.20	443	82
TWO BEDROOMS						
2A.01	MZ.04 12.05 13.05 14.05 15.05 16.05 17.05 18.05 19.05 20.04 21.04 22.04 23.04 24.04 25.04 26.04 27.04 28.04 29.04 30.04 31.04 32.04 33.04 34.04 35.04 36.04 37.04 38.04 39.04 40.04 41.04 42.04 43.04 44.04 45.04*1 46.04 47.04 49.04 50.04 51.04 52.04 53.04 54.04	MEZZANINE, 12-47, 49-54	OLD TRAFFORD / DEANSGATE SQUARE	89.56	963	83
2A.01	12.10 13.10 14.10 15.10 16.10 17.10 18.10 19.10 20.08 21.08 22.08 23.08 24.08 25.08 26.08 27.08 28.08 29.08 30.08 31.08 32.08 33.08 34.08 35.08 36.08 37.08 38.08 39.08 40.08 41.08 42.08 43.08 45.01*2 46.08 47.08 49.08 50.08 51.08 52.08 53.08 54.08	12-47, 49-54	UNIVERSITY / CITY CENTRE	89.56	963	83
2A.02	12.01 13.01 14.01 15.01 16.01 17.01 18.01 19.01 20.01 21.01 22.01 23.01 24.01 25.01 26.01 27.01 28.01 29.01 30.01 31.01 32.01 33.01 34.01 35.01 36.01 37.01 38.01 39.01 40.01 41.01 42.01 43.01 44.01 46.01 47.01 48.01 49.01 50.01 51.01 52.01 53.01 54.01	12-47, 49-54	UNIVERSITY / OLD TRAFFORD	89.65	964	84
2A.02	12.06 13.06 14.06 15.06 16.06 17.06 18.06 19.06 20.05 21.05 22.05 23.05 24.05 25.05 26.05 27.05 28.05 29.05 30.05 31.05 32.05 33.05 34.05 35.05 36.05 37.05 38.05 39.05 40.05 41.05 42.05 43.05 46.05 47.05 48.05 49.05 50.05 51.05 52.05 53.05 54.05	12-47, 49-54	DEANSGATE SQUARE	89.65	964	84
2B.01	20.03 21.03 22.03 23.03 24.03 25.03 26.03 27.03 28.03 29.03 30.03 31.03 32.03 33.03 34.03 35.03 36.03 37.03 38.03 39.03 40.03 41.03 42.03 43.03 44.03 45.03 46.03 47.03 49.03 50.03 51.03 52.03 53.03 54.03	20-47, 49-54	OLD TRAFFORD	73.47	790	85
2B.01	20.07 21.07 22.07 23.07 24.07 25.07 26.07 27.07 28.07 29.07 30.07 31.07 32.07 33.07 34.07 35.07 36.07 37.07 38.07 39.07 40.07 41.07 42.07 43.07 46.07 47.07 49.07 50.07 51.07 52.07 53.07 54.07	20-43, 46-47, 49-54	DEANSGATE SQUARE	73.47	790	85
2B.02	20.02 21.02 22.02 23.02 24.02 25.02 26.02 27.02 28.02 29.02 30.02 31.02 32.02 33.02 34.02 35.02 36.02 37.02 38.02 39.02 40.02 41.02 42.02 43.02 44.02 45.02 46.02 47.02 49.02 50.02 51.02 52.02 53.02 54.02	20-47, 49-54	OLD TRAFFORD	73.19	787	86
2B.02	20.06 21.06 22.06 23.06 24.06 25.06 26.06 27.06 28.06 29.06 30.06 31.06 32.06 33.06 34.06 35.06 36.06 37.06 38.06 39.06 40.06 41.06 42.06 43.06 46.06 47.06 49.06 50.06 51.06 52.06 53.06 54.06	20-43, 46-47, 49-54	DEANSGATE SQUARE	73.19	787	86

Apartment Locator

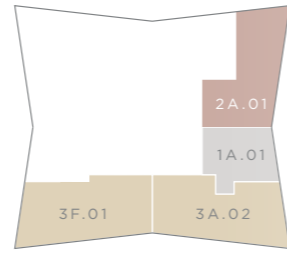
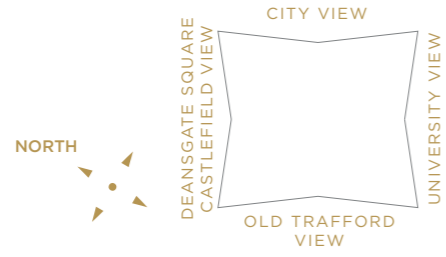
TYPE	APARTMENT NUMBER	LEVEL	VIEW	TOTAL M ²	TOTAL FT ²	PAGE
TWO BEDROOMS						
2C.01	56.01 57.01 58.01 59.01	56-59	UNIVERSITY	107.69	1158	87
2C.02	56.04 57.04 58.04 59.04	56-59	CASTLEFIELD	107.79	1159	88
2D.01	56.03 57.03 58.03 59.03	56-59	OLD TRAFFORD / CASTLEFIELD	107.69	1158	89
2D.01	56.06 57.06 58.06 59.06	56-59	CITY CENTRE / UNIVERSITY	107.69	1158	89
2D.02	56.02 57.02 58.02 59.02	56-59	UNIVERSITY / OLD TRAFFORD	108.81	1170	90
2D.02	56.05 57.05 58.05 59.05	56-59	CASTLEFIELD / CITY CENTRE	108.81	1170	90
2E.01	60.01 61.01 62.01 63.01	60-63	UNIVERSITY / OLD TRAFFORD	164.61	1770	91
2E.01	60.03 61.03 62.03 63.03	60-63	CASTLEFIELD / CITY CENTRE	164.61	1770	91
2E.02	60.02 61.02 62.02 63.02	60-63	OLD TRAFFORD / CASTLEFIELD	164.61	1170	92
2E.02	60.04 61.04 62.04 63.04	60-63	CITY CENTRE / UNIVERSITY	164.61	1170	92
2F.01	01.07	01	CITY CENTRE	94.49	1016	93
2P.ST	44.05	44	DEANSGATE SQUARE	89.65	964	-
2P.ST	44.06	44	UNIVERSITY / CITY CENTRE	89.56	963	-
THREE BEDROOMS						
3A.01	01.03 02.03 03.03 04.03 05.03 06.03 07.03 08.03 09.03 10.03 11.03 48.03	01-11, 48	OLD TRAFFORD	105.18	1131	94
3A.01	02.07 03.07 04.07 05.07 06.07 07.07 08.07 09.07 10.07 11.07 48.07	02-11, 48	DEANSGATE SQUARE	105.18	1131	94
3A.02	MZ.02 01.02 02.02 03.02 04.02 05.02 06.02 07.02 08.02 09.02 10.02 11.02 48.02	MEZZANINE-11, 48	OLD TRAFFORD	105.46	1134	95
3A.02	01.06 02.06 03.06 04.06 05.06 06.06 07.06 08.06 09.06 10.06 11.06 48.06	01-11, 48	DEANSGATE SQUARE	105.46	1134	95
3B.01	45.06 55.04	45, 55	UNIVERSITY / CITY CENTRE	165.26	1777	96
3B.01	55.02	55	OLD TRAFFORD / CASTLEFIELD	165.26	1777	96
3B.02	45.05 55.03	45, 55	CITY CENTRE / CASTLEFIELD	165.26	1777	97
3B.02	55.01	55	UNIVERSITY / OLD TRAFFORD	165.26	1777	97
3F.01	MZ.03	MEZZANINE	DEANSGATE SQUARE	108.80	1171	98
PENTHOUSES						
PENT	PH.01	64-65	UNIVERSITY / OLD TRAFFORD	285.44	3072	100
PENT	PH.02	64-65	OLD TRAFFORD / CASTLEFIELD	286.35	3079	102
PENT	PH.03	64-65	CASTLEFIELD / CITY CENTRE	286.44	3080	104
PENT	PH.04	64-65	CITY CENTRE / UNIVERSITY	295.74	3180	106

*1apartment has a view of Old Trafford / Castlefield

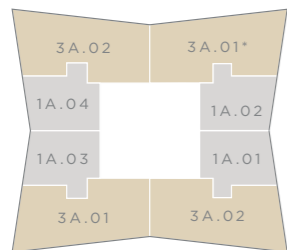
*2apartment has a view of University / Old Trafford

Plot Locator

- ONE BEDROOM
- TWO BEDROOM
- THREE BEDROOM
- PENTHOUSES

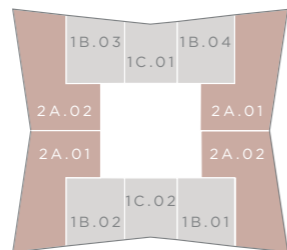


MEZZANINE LEVEL

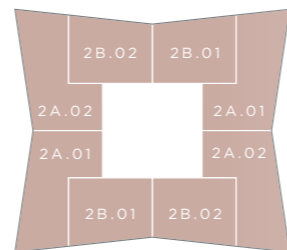


LEVELS 01-11 & 48

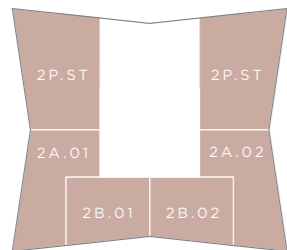
* Please note on level 1 this is apartment 2F.01



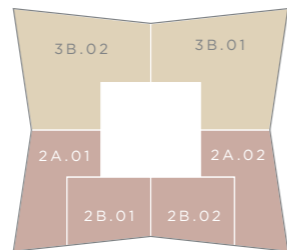
LEVELS 12-19



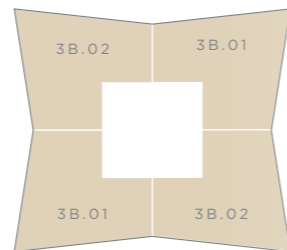
LEVELS 20-43, 46-47, 49-54



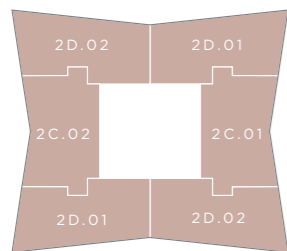
LEVEL 44



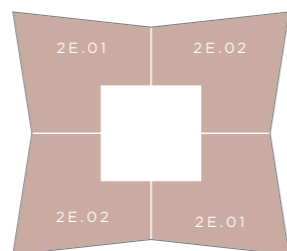
LEVEL 45



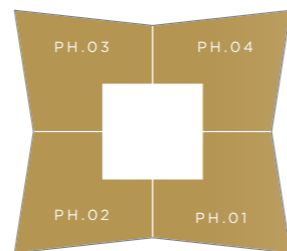
LEVEL 55



LEVELS 56-59



LEVELS 60-63



LEVELS 64-65

One Bedroom

APARTMENT | 1A.01

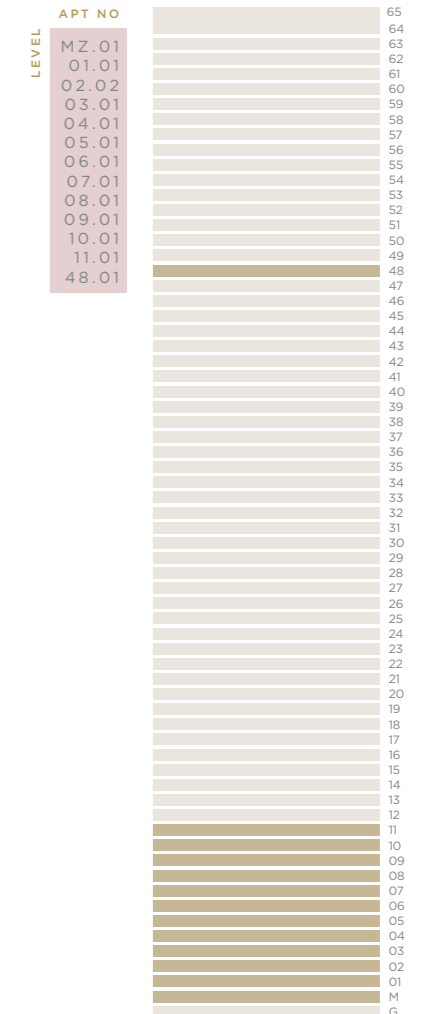
OVERALL:

55.71 M² | 599 FT²



SIZES	METRIC (M)	IMPERIAL
LIVING / KITCHEN	3.26 x 8.44	10'7" x 27'8"
BEDROOM	2.97 x 5.02	9'7" x 16'5"

Dimensions are taken from the points indicated ◀ ▶



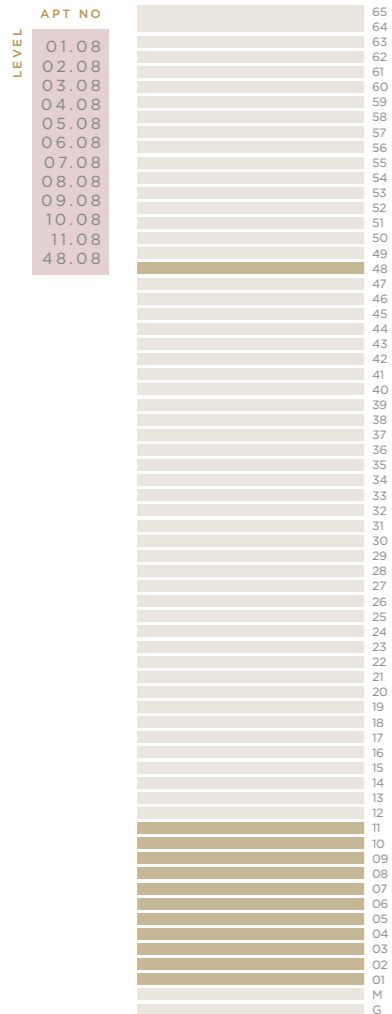
Please note that the position of the purge vent doors varies from floor to floor. Floor plans shown for Deansgate Square are with approximate dimensions only. Each layout size may vary. All measurements may vary within a tolerance of 5% and are to the maximum room dimensions. The dimensions are not intended for use for carpet/flooring sizes, appliances or furniture. Kitchen layout is indicative only. Please ask Sales Consultant for further information.

One Bedroom

APARTMENT | 1A.02

OVERALL:

55.24 M² | 594 FT²



SIZES	METRIC (M)	IMPERIAL
LIVING / KITCHEN	3.26 x 8.44	10'7" x 27'8"
BEDROOM	2.97 x 5.02	9'7" x 16'5"

Dimensions are taken from the points indicated ◀ ▶



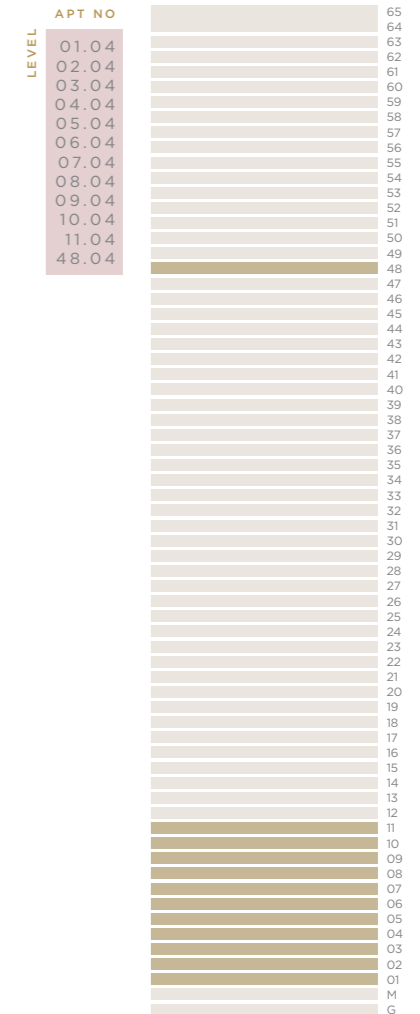
Please note that the position of the purge vent doors varies from floor to floor. Floor plans shown for Deansgate Square are with approximate dimensions only. Each layout size may vary. All measurements may vary within a tolerance of 5% and are to the maximum room dimensions. The dimensions are not intended for use for carpet/flooring sizes, appliances or furniture. Kitchen layout is indicative only. Please ask Sales Consultant for further information.

One Bedroom

APARTMENT | 1A.03

OVERALL:

55.80 M² | 600 FT²



SIZES	METRIC (M)	IMPERIAL
LIVING / KITCHEN	3.26 x 8.44	10'7" x 27'8"
BEDROOM	2.97 x 5.02	9'7" x 16'5"

Dimensions are taken from the points indicated ◀ ▶



Please note that the position of the purge vent doors varies from floor to floor. Floor plans shown for Deansgate Square are with approximate dimensions only. Each layout size may vary. All measurements may vary within a tolerance of 5% and are to the maximum room dimensions. The dimensions are not intended for use for carpet/flooring sizes, appliances or furniture. Kitchen layout is indicative only. Please ask Sales Consultant for further information.

One Bedroom

APARTMENT | 1A.04

OVERALL:

55.34 M² | 595 FT²



LEVEL	APT NO
01.05	65
02.05	64
03.05	63
04.05	62
05.05	61
06.05	60
07.05	59
08.05	58
09.05	57
10.05	56
11.05	55
48.05	54
	53
	52
	51
	50
	49
	48
	47
	46
	45
	44
	43
	42
	41
	40
	39
	38
	37
	36
	35
	34
	33
	32
	31
	30
	29
	28
	27
	26
	25
	24
	23
	22
	21
	20
	19
	18
	17
	16
	15
	14
	13
	12
	11
	10
	09
	08
	07
	06
	05
	04
	03
	02
	01
	M
	G

SIZES	METRIC (M)	IMPERIAL
LIVING / KITCHEN	3.26 x 8.44	10'7" x 27'8"
BEDROOM	2.97 x 5.02	9'7" x 16'5"

Dimensions are taken from the points indicated ◀ ▶



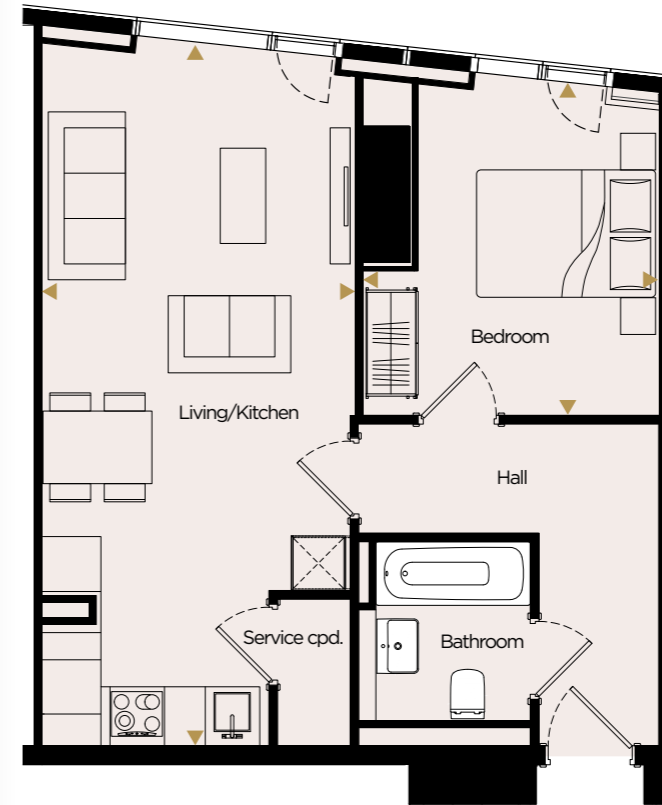
Please note that the position of the purge vent doors varies from floor to floor. Floor plans shown for Deansgate Square are with approximate dimensions only. Each layout size may vary. All measurements may vary within a tolerance of 5% and are to the maximum room dimensions. The dimensions are not intended for use for carpet/flooring sizes, appliances or furniture. Kitchen layout is indicative only. Please ask Sales Consultant for further information.

One Bedroom

APARTMENT | 1B.01

OVERALL:

51.80 M² | 557 FT²



LEVEL	APT NO
12.02	65
13.02	64
14.02	63
15.02	62
16.02	61
17.02	60
18.02	59
19.02	58
	57
	56
	55
	54
	53
	52
	51
	50
	49
	48
	47
	46
	45
	44
	43
	42
	41
	40
	39
	38
	37
	36
	35
	34
	33
	32
	31
	30
	29
	28
	27
	26
	25
	24
	23
	22
	21
	20
	19
	18
	17
	16
	15
	14
	13
	12
	11
	10
	09
	08
	07
	06
	05
	04
	03
	02
	01
	M
	G

SIZES	METRIC (M)	IMPERIAL
LIVING / KITCHEN	7.75 x 3.50	25'5" x 11'6"
BEDROOM	3.70 x 3.19	12'2" x 10'5"

Dimensions are taken from the points indicated ◀ ▶

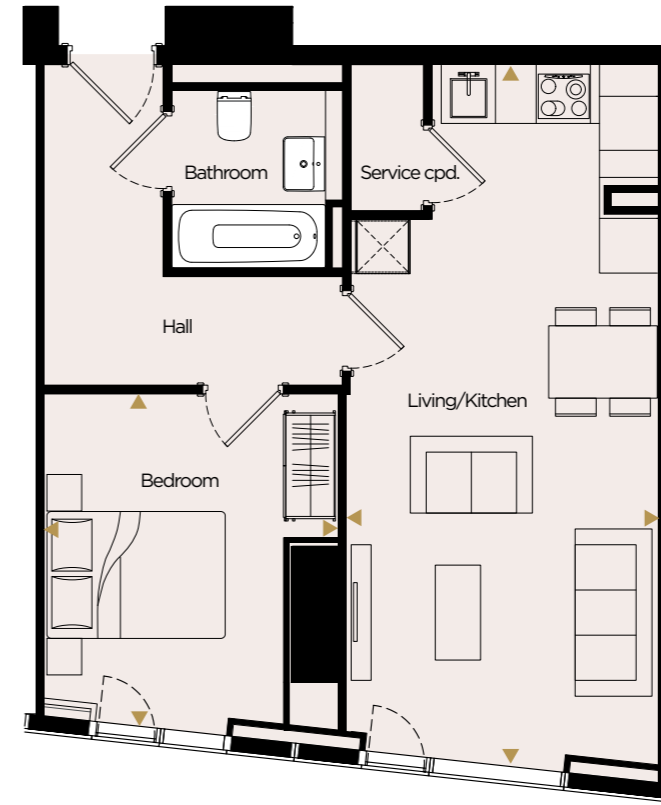
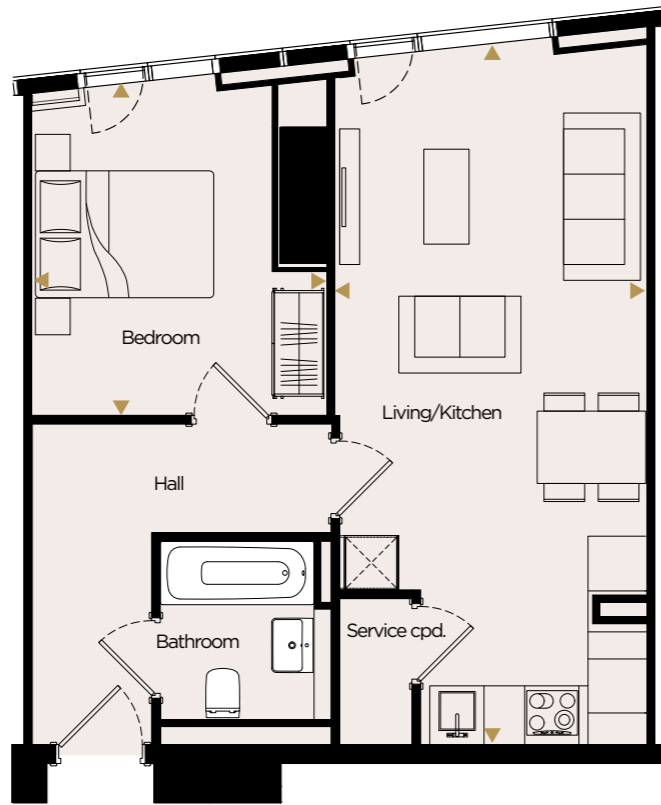


Please note that the position of the purge vent doors varies from floor to floor. Floor plans shown for Deansgate Square are with approximate dimensions only. Each layout size may vary. All measurements may vary within a tolerance of 5% and are to the maximum room dimensions. The dimensions are not intended for use for carpet/flooring sizes, appliances or furniture. Kitchen layout is indicative only. Please ask Sales Consultant for further information.

One Bedroom

APARTMENT | 1B.02

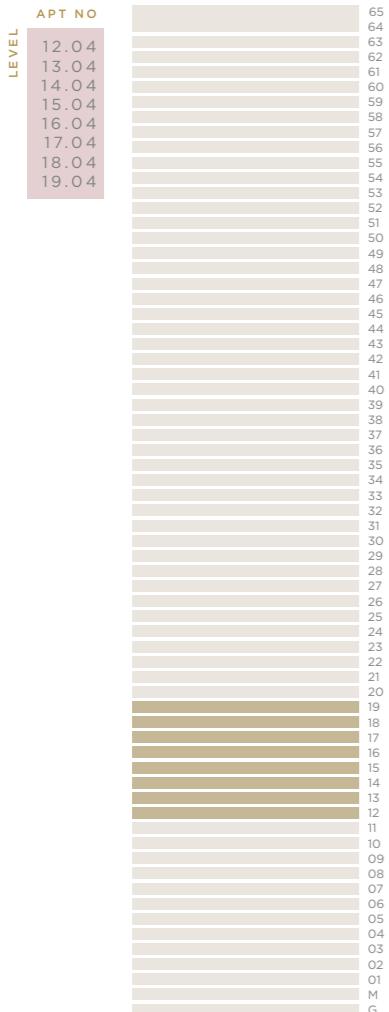
OVERALL:
52.17 M² | 561 FT²



One Bedroom

APARTMENT | 1B.03

OVERALL:
52.17 M² | 561 FT²

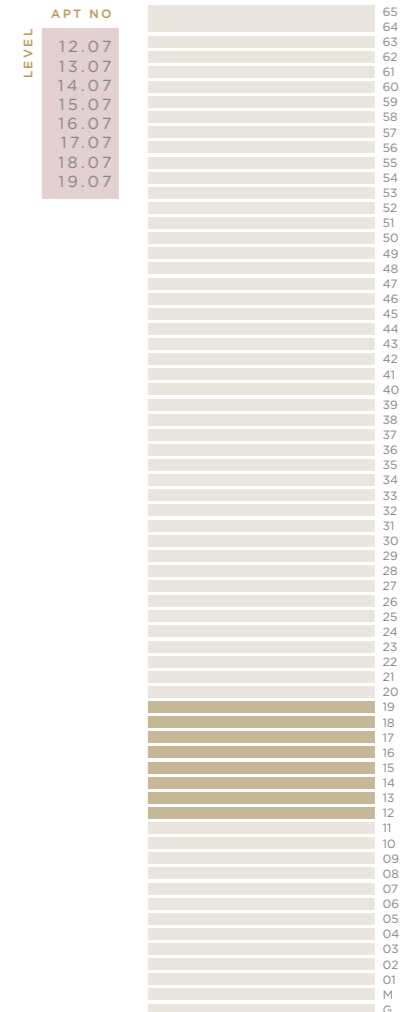


SIZES	METRIC (M)	IMPERIAL
LIVING / KITCHEN	7.75 x 3.50	25'5" x 11'6"
BEDROOM	3.70 x 3.08	12'2" x 10'1"

Dimensions are taken from the points indicated ◀ ▶



Please note that the position of the purge vent doors varies from floor to floor. Floor plans shown for Deansgate Square are with approximate dimensions only. Each layout size may vary. All measurements may vary within a tolerance of 5% and are to the maximum room dimensions. The dimensions are not intended for use for carpet/flooring sizes, appliances or furniture. Kitchen layout is indicative only. Please ask Sales Consultant for further information.



SIZES	METRIC (M)	IMPERIAL
LIVING / KITCHEN	7.75 x 3.50	25'5" x 11'6"
BEDROOM	3.70 x 3.08	12'2" x 10'1"

Dimensions are taken from the points indicated ◀ ▶



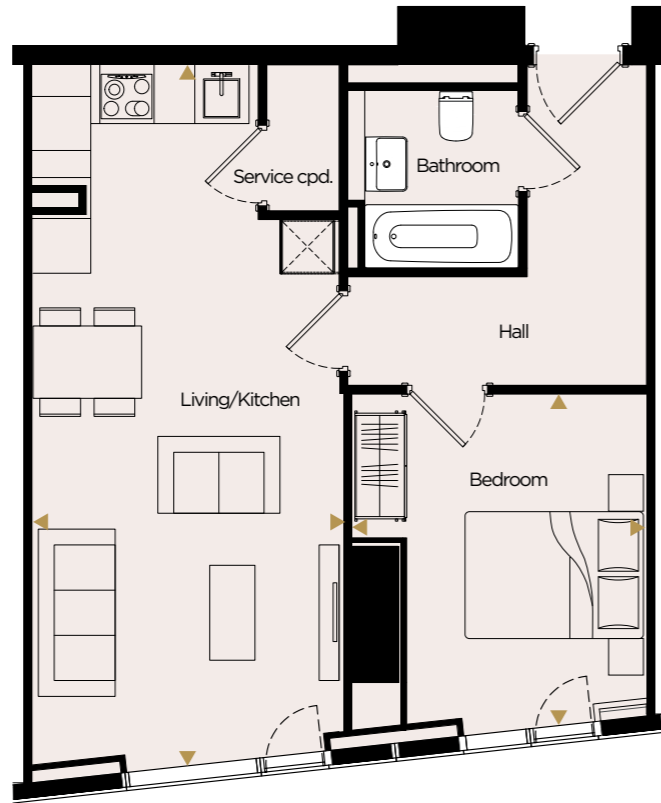
Please note that the position of the purge vent doors varies from floor to floor. Floor plans shown for Deansgate Square are with approximate dimensions only. Each layout size may vary. All measurements may vary within a tolerance of 5% and are to the maximum room dimensions. The dimensions are not intended for use for carpet/flooring sizes, appliances or furniture. Kitchen layout is indicative only. Please ask Sales Consultant for further information.

One Bedroom

APARTMENT | 1B.04

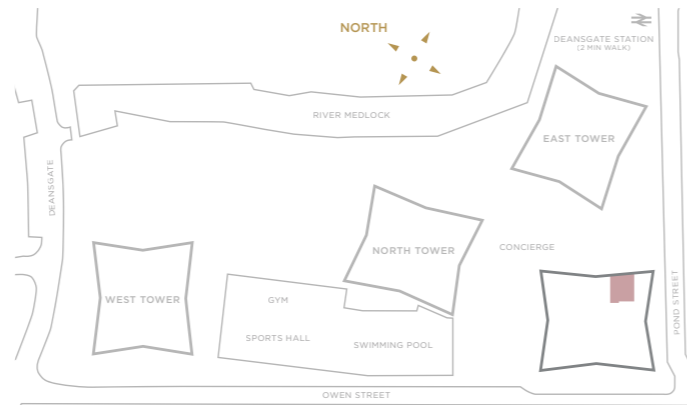
OVERALL:

51.99 M² | 559 FT²



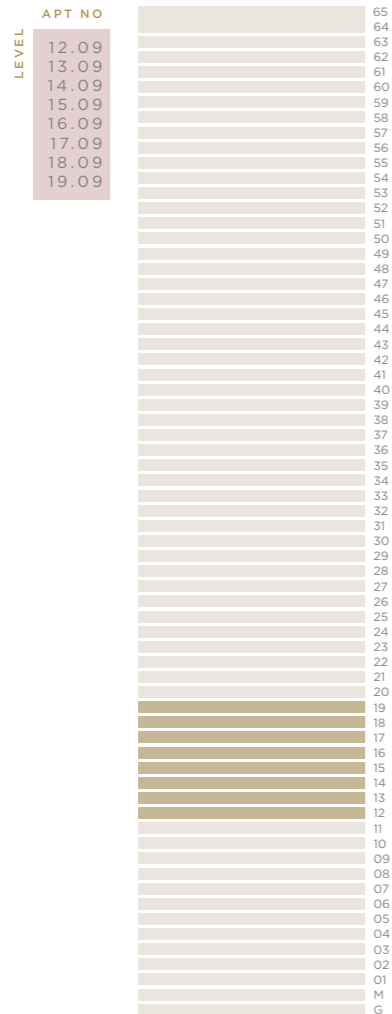
SIZES	METRIC (M)	IMPERIAL
LIVING / KITCHEN	7.75 x 3.50	25'5" x 11'6"
BEDROOM	3.70 x 3.08	12'2" x 10'1"

Dimensions are taken from the points indicated ◀ ▶



Please note that the position of the purge vent doors varies from floor to floor.

Floor plans shown for Deansgate Square are with approximate dimensions only. Each layout size may vary. All measurements may vary within a tolerance of 5% and are to the maximum room dimensions. The dimensions are not intended for use for carpet/flooring sizes, appliances or furniture. Kitchen layout is indicative only. Please ask Sales Consultant for further information.



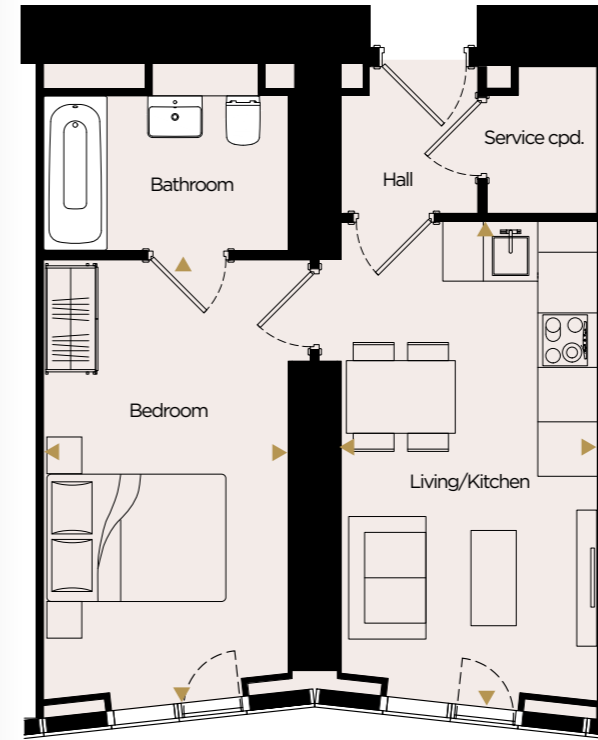
One Bedroom

APARTMENT | 1C.01

OVERALL:

41.11 M² | 442 FT²

Please note apartments 12.08, 18.08 & 19.08 have an alternative kitchen layout.



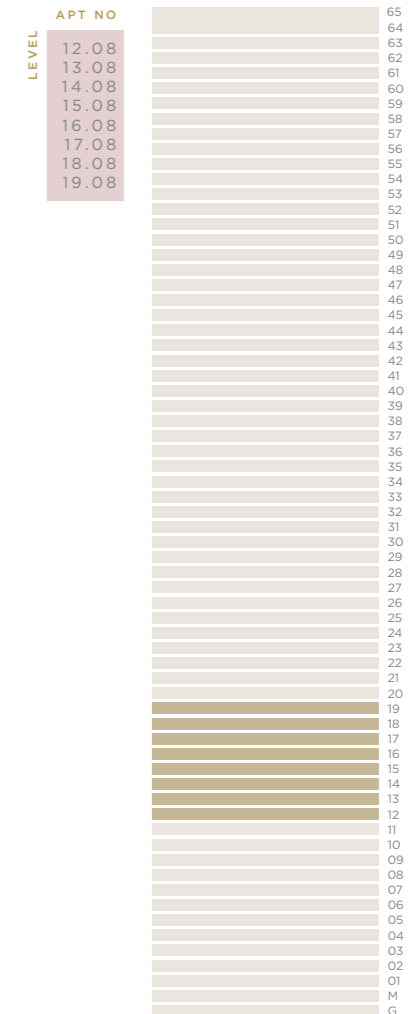
SIZES	METRIC (M)	IMPERIAL
LIVING / KITCHEN	5.27 x 2.81	17'3" x 9'3"
BEDROOM	4.84 x 2.88	15'10" x 9'4"

Dimensions are taken from the points indicated ◀ ▶



Please note that the position of the purge vent doors varies from floor to floor.

Floor plans shown for Deansgate Square are with approximate dimensions only. Each layout size may vary. All measurements may vary within a tolerance of 5% and are to the maximum room dimensions. The dimensions are not intended for use for carpet/flooring sizes, appliances or furniture. Kitchen layout is indicative only. Please ask Sales Consultant for further information.

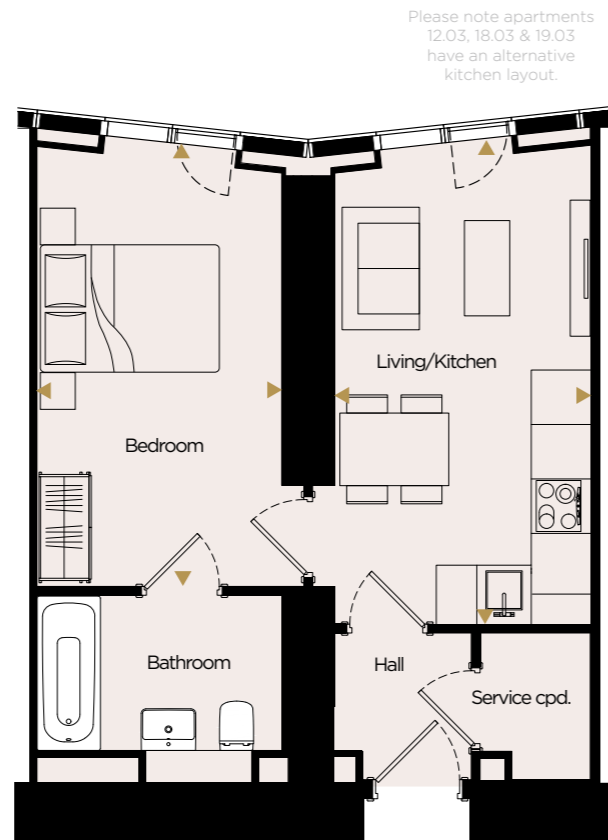


One Bedroom

APARTMENT | 1C.02

OVERALL:

41.20 M² | 443 FT²

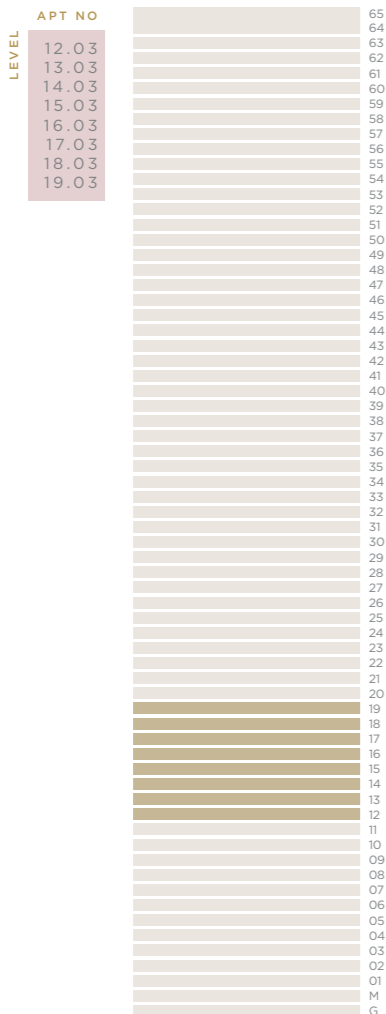


SIZES	METRIC (M)	IMPERIAL
LIVING / KITCHEN	5.27 x 2.82	17'3" x 9'3"
BEDROOM	4.84 x 2.69	15'10" x 8'9"

Dimensions are taken from the points indicated ◀ ▶



Please note that the position of the purge vent doors varies from floor to floor. Floor plans shown for Deansgate Square are with approximate dimensions only. Each layout size may vary. All measurements may vary within a tolerance of 5% and are to the maximum room dimensions. The dimensions are not intended for use for carpet/flooring sizes, appliances or furniture. Kitchen layout is indicative only. Please ask Sales Consultant for further information.



Two Bedroom

APARTMENT | 2A.01

OVERALL:

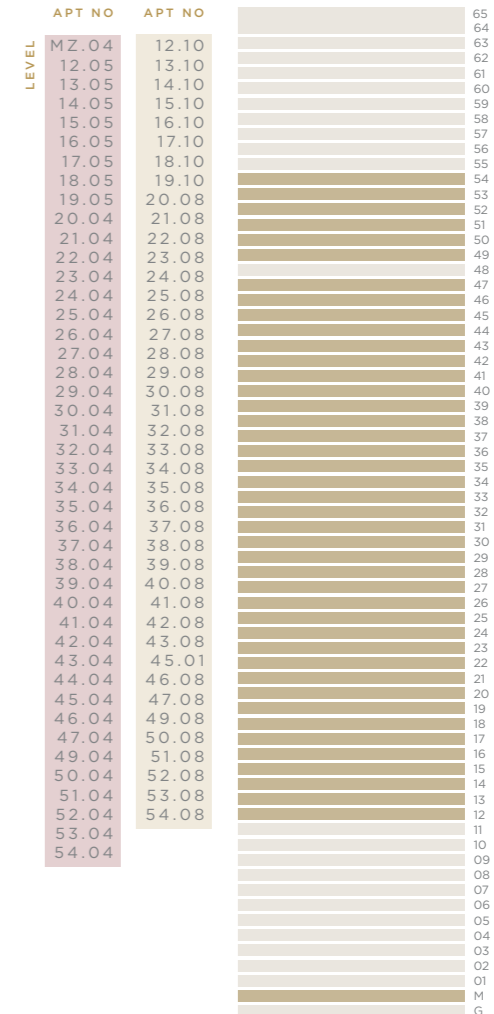
89.56 M² | 963 FT²

SIZES	METRIC (M)	IMPERIAL
LIVING / KITCHEN	5.48 x 7.02	17'11" x 23'0"
BEDROOM 1	4.46 x 2.76	14'5" x 9'1"
DRESSING	1.63 x 2.27	5'4" x 7'5"
BEDROOM 2	3.34 x 3.59	10'11" x 11'9"

Dimensions are taken from the points indicated ◀ ▶



Please note that the position of the purge vent doors varies from floor to floor. Floor plans shown for Deansgate Square are with approximate dimensions only. Each layout size may vary. All measurements may vary within a tolerance of 5% and are to the maximum room dimensions. The dimensions are not intended for use for carpet/flooring sizes, appliances or furniture. Kitchen layout is indicative only. Please ask Sales Consultant for further information.



Two Bedroom

APARTMENT | 2B.01

OVERALL:
73.47 M²
790 FT²



LEVEL	APT NO	APT NO
	20.03	20.07
	21.03	21.07
	22.03	22.07
	23.03	23.07
	24.03	24.07
	25.03	25.07
	26.03	26.07
	27.03	27.07
	28.03	28.07
	29.03	29.07
	30.03	30.07
	31.03	31.07
	32.03	32.07
	33.03	33.07
	34.03	34.07
	35.03	35.07
	36.03	36.07
	37.03	37.07
	38.03	38.07
	39.03	39.07
	40.03	40.07
	41.03	41.07
	42.03	42.07
	43.03	43.07
	44.03	44.07
	45.03	46.07
	46.03	47.07
	47.03	49.07
	49.03	50.07
	50.03	51.07
	51.03	52.07
	52.03	53.07
	53.03	54.07
	54.03	

SIZES	METRIC (M)	IMPERIAL
LIVING / KITCHEN	7.70 x 3.51	25'3" x 11'6"
BEDROOM 1	4.67 x 2.79	15'3" x 9'2"
BEDROOM 2	3.72 x 3.21	12'2" x 10'5"

Dimensions are taken from the points indicated ◀ ▶



Please note that the position of the purge vent doors varies from floor to floor. Floor plans shown for Deansgate Square are with approximate dimensions only. Each layout size may vary. All measurements may vary within a tolerance of 5% and are to the maximum room dimensions. The dimensions are not intended for use for carpet/flooring sizes, appliances or furniture. Kitchen layout is indicative only. Please ask Sales Consultant for further information.



Two Bedroom

APARTMENT | 2A.02

OVERALL:
89.65 M² | 964 FT²

SIZES	METRIC (M)	IMPERIAL
LIVING / KITCHEN	5.48 x 7.02	17'11" x 23'0"
BEDROOM 1	4.41 x 2.76	14'5" x 9'1"
DRESSING	1.63 x 2.27	5'4" x 7'5"
BEDROOM 2	3.34 x 3.59	10'11" x 11'9"

Dimensions are taken from the points indicated ◀ ▶



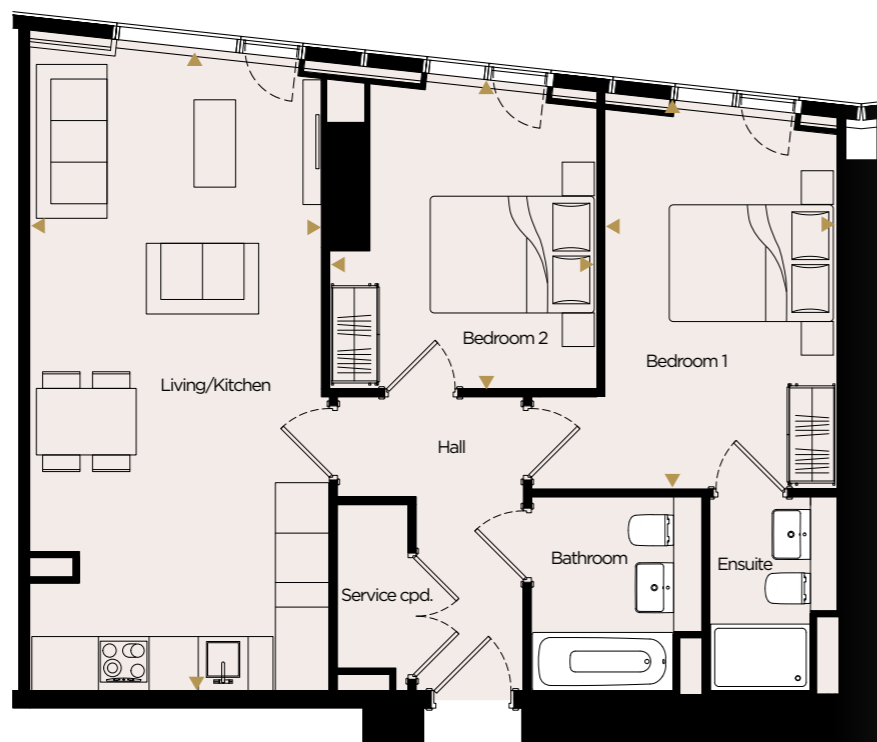
LEVEL	APT NO	APT NO
	12.01	12.06
	13.01	13.06
	14.01	14.06
	15.01	15.06
	16.01	16.06
	17.01	17.06
	18.01	18.06
	19.01	19.06
	20.01	20.05
	21.01	21.05
	22.01	22.05
	23.01	23.05
	24.01	24.05
	25.01	25.05
	26.01	26.05
	27.01	27.05
	28.01	28.05
	29.01	29.05
	30.01	30.05
	31.01	31.05
	32.01	32.05
	33.01	33.05
	34.01	34.05
	35.01	35.05
	36.01	36.05
	37.01	37.05
	38.01	38.05
	39.01	39.05
	40.01	40.05
	41.01	41.05
	42.01	42.05
	43.01	43.05
	44.01	44.05
	45.01	46.05
	46.01	47.05
	47.01	49.05
	49.01	50.05
	50.01	51.05
	51.01	52.05
	52.01	53.05
	53.01	54.05
	54.01	

Please note that the position of the purge vent doors varies from floor to floor. Floor plans shown for Deansgate Square are with approximate dimensions only. Each layout size may vary. All measurements may vary within a tolerance of 5% and are to the maximum room dimensions. The dimensions are not intended for use for carpet/flooring sizes, appliances or furniture. Kitchen layout is indicative only. Please ask Sales Consultant for further information.

Two Bedroom

APARTMENT | 2B.02

OVERALL:
73.19 M²
787 FT²



LEVEL	APT NO	APT NO
20.02	20.06	65
21.02	21.06	64
22.02	22.06	63
23.02	23.06	62
24.02	24.06	61
25.02	25.06	60
26.02	26.06	59
27.02	27.06	58
28.02	28.06	57
29.02	29.06	56
30.02	30.06	55
31.02	31.06	54
32.02	32.06	53
33.02	33.06	52
34.02	34.06	51
35.02	35.06	50
36.02	36.06	49
37.02	37.06	48
38.02	38.06	47
39.02	39.06	46
40.02	40.06	45
41.02	41.06	44
42.02	42.06	43
43.02	43.06	42
44.02	46.06	41
45.02	47.06	40
46.02	49.06	39
47.02	50.06	38
48.02	51.06	37
49.02	52.06	36
50.02	53.06	35
51.02	54.06	34
52.02		33
53.02		32
54.02		31
		30
		29
		28
		27
		26
		25
		24
		23
		22
		21
		20
		19
		18
		17
		16
		15
		14
		13
		12
		11
		10
		09
		08
		07
		06
		05
		04
		03
		02
		01
		M
		G

SIZES	METRIC (M)	IMPERIAL
LIVING / KITCHEN	7.70 x 3.68	25'3" x 12'1"
BEDROOM 1	4.67 x 2.79	15'3" x 9'2"
BEDROOM 2	3.72 x 3.21	12'2" x 8'11"

Dimensions are taken from the points indicated ◀ ▶



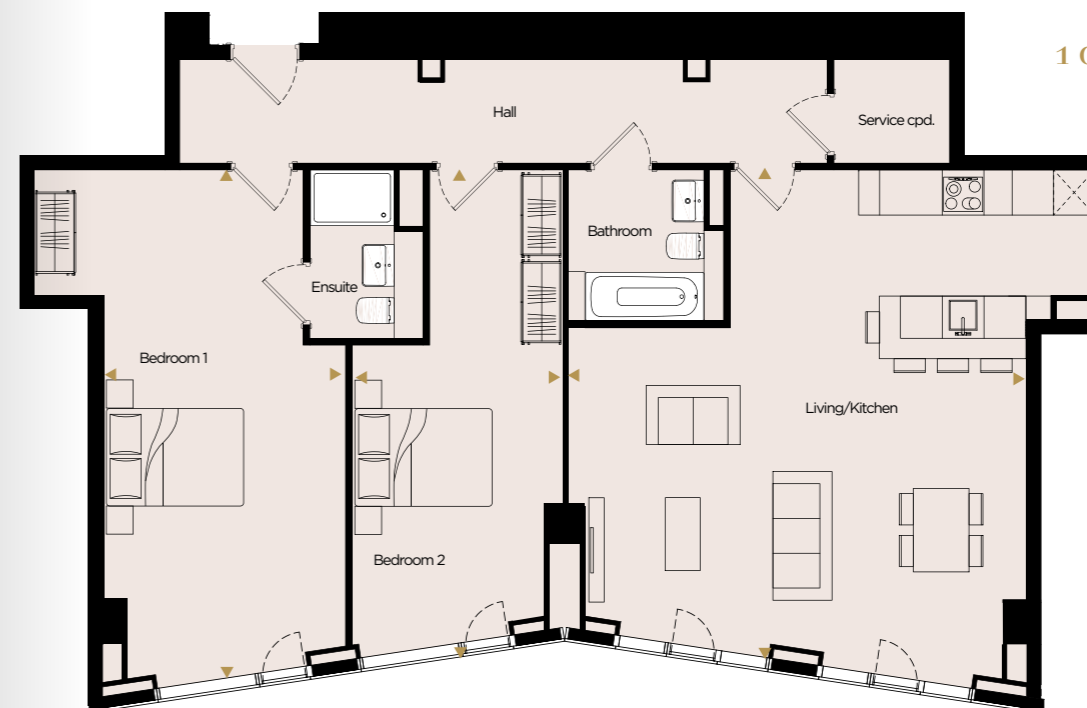
Please note that the position of the purge vent doors varies from floor to floor.

Floor plans shown for Deansgate Square are with approximate dimensions only. Each layout size may vary. All measurements may vary within a tolerance of 5% and are to the maximum room dimensions. The dimensions are not intended for use for carpet/flooring sizes, appliances or furniture. Kitchen layout is indicative only. Please ask Sales Consultant for further information.

Two Bedroom

APARTMENT | 2C.01

OVERALL:
107.69 M²
1158 FT²



LEVEL	APT NO	APT NO
56.01		65
57.01		64
58.01		63
59.01		62
		61
		60
		59
		58
		57
		56
		55
		54
		53
		52
		51
		50
		49
		48
		47
		46
		45
		44
		43
		42
		41
		40
		39
		38
		37
		36
		35
		34
		33
		32
		31
		30
		29
		28
		27
		26
		25
		24
		23
		22
		21
		20
		19
		18
		17
		16
		15
		14
		13
		12
		11
		10
		09
		08
		07
		06
		05
		04
		03
		02
		01
		M
		G

SIZES	METRIC (M)	IMPERIAL
LIVING / KITCHEN	7.01 x 6.28	23'0" x 20'6"
BEDROOM 1	7.30 x 3.43	23'11" x 11'3"
BEDROOM 2	6.80 x 2.76	22'3" x 9'1"

Dimensions are taken from the points indicated ◀ ▶



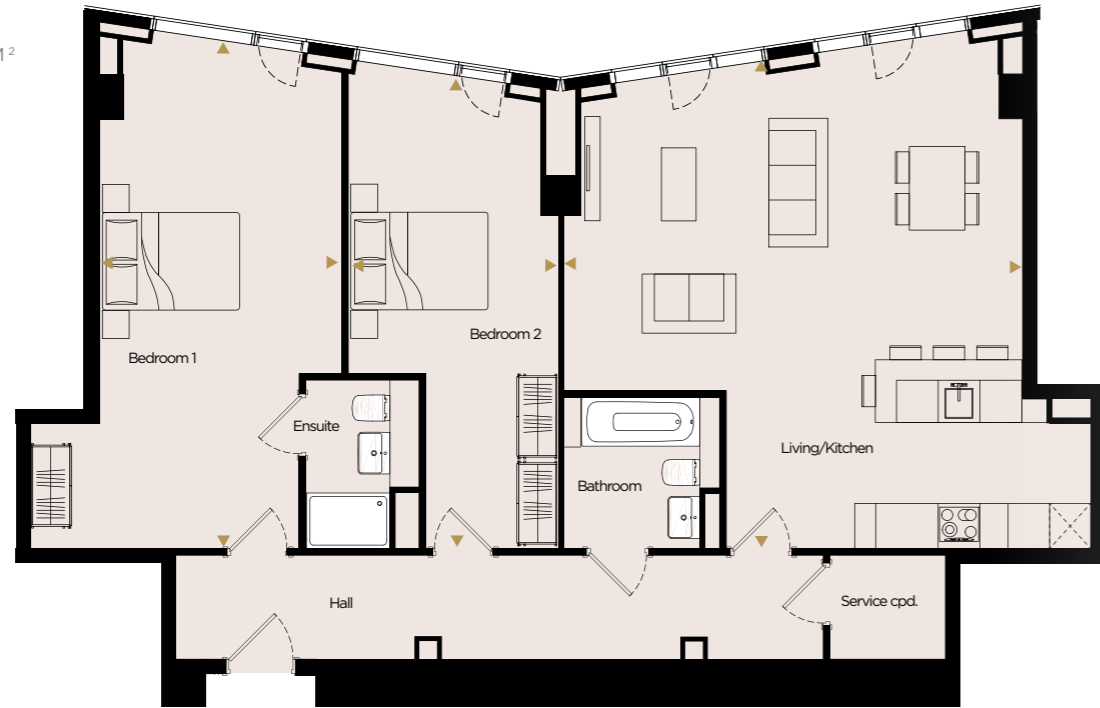
Please note that the position of the purge vent doors varies from floor to floor.

Floor plans shown for Deansgate Square are with approximate dimensions only. Each layout size may vary. All measurements may vary within a tolerance of 5% and are to the maximum room dimensions. The dimensions are not intended for use for carpet/flooring sizes, appliances or furniture. Kitchen layout is indicative only. Please ask Sales Consultant for further information.

Two Bedroom

APARTMENT | 2C.02

OVERALL:
107.79 M²
1159 FT²



LEVEL	APT NO
56.04	65
57.04	64
58.04	63
59.04	62
	61
	60
	59
	58
	57
	56
	55
	54
	53
	52
	51
	50
	49
	48
	47
	46
	45
	44
	43
	42
	41
	40
	39
	38
	37
	36
	35
	34
	33
	32
	31
	30
	29
	28
	27
	26
	25
	24
	23
	22
	21
	20
	19
	18
	17
	16
	15
	14
	13
	12
	11
	10
	09
	08
	07
	06
	05
	04
	03
	02
	01
	M
	G

SIZES	METRIC (M)	IMPERIAL
LIVING / KITCHEN	7.01 x 6.28	23'0" x 20'6"
BEDROOM 1	7.30 x 3.43	23'11" x 11'3"
BEDROOM 2	6.80 x 2.76	22'3" x 9'1"

Dimensions are taken from the points indicated ◀ ▶

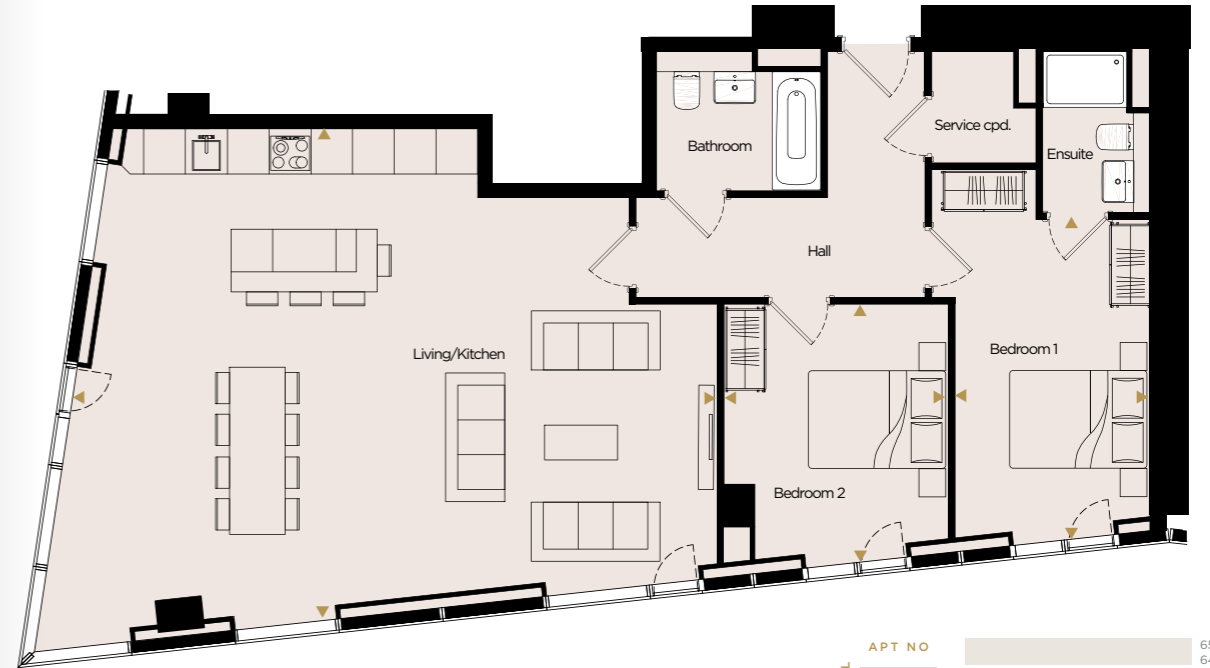


Please note that the position of the purge vent doors varies from floor to floor. Floor plans shown for Deansgate Square are with approximate dimensions only. Each layout size may vary. All measurements may vary within a tolerance of 5% and are to the maximum room dimensions. The dimensions are not intended for use for carpet/flooring sizes, appliances or furniture. Kitchen layout is indicative only. Please ask Sales Consultant for further information.

Two Bedroom

APARTMENT | 2D.01

OVERALL:
107.69 M² | **1158** FT²



LEVEL	APT NO
56.03	65
57.03	64
58.03	63
59.03	62
	61
	60
	59
	58
	57
	56
	55
	54
	53
	52
	51
	50
	49
	48
	47
	46
	45
	44
	43
	42
	41
	40
	39
	38
	37
	36
	35
	34
	33
	32
	31
	30
	29
	28
	27
	26
	25
	24
	23
	22
	21
	20
	19
	18
	17
	16
	15
	14
	13
	12
	11
	10
	09
	08
	07
	06
	05
	04
	03
	02
	01
	M
	G

SIZES	METRIC (M)	IMPERIAL
LIVING / KITCHEN	7.07 x 9.35	23'2" x 30'8"
BEDROOM 1	4.60 x 2.78	15'1" x 9'2"
BEDROOM 2	3.71 x 3.17	12'2" x 10'4"

Dimensions are taken from the points indicated ◀ ▶



Please note that the position of the purge vent doors varies from floor to floor. Floor plans shown for Deansgate Square are with approximate dimensions only. Each layout size may vary. All measurements may vary within a tolerance of 5% and are to the maximum room dimensions. The dimensions are not intended for use for carpet/flooring sizes, appliances or furniture. Kitchen layout is indicative only. Please ask Sales Consultant for further information.

Two Bedroom

APARTMENT | 2D.02

OVERALL:

108.81 M² | 1170 FT²



LEVEL	APT NO
56.02	65
57.02	64
58.02	63
59.02	62
	61
	60
	59
	58
	57
56.05	56
57.05	55
58.05	54
59.05	53
	52
	51
	50
	49
	48
	47
	46
	45
	44
	43
	42
	41
	40
	39
	38
	37
	36
	35
	34
	33
	32
	31
	30
	29
	28
	27
	26
	25
	24
	23
	22
	21
	20
	19
	18
	17
	16
	15
	14
	13
	12
	11
	10
	09
	08
	07
	06
	05
	04
	03
	02
	01
	M
	G

SIZES	METRIC (M)	IMPERIAL
LIVING / KITCHEN	7.07 x 9.35	23'2" x 30'8"
BEDROOM 1	4.60 x 2.78	15'1" x 9'2"
BEDROOM 2	3.71 x 3.17	12'2" x 10'4"

Dimensions are taken from the points indicated ◀ ▶



Please note that the position of the purge vent doors varies from floor to floor.

Floor plans shown for Deansgate Square are with approximate dimensions only. Each layout size may vary. All measurements may vary within a tolerance of 5% and are to the maximum room dimensions. The dimensions are not intended for use for carpet/flooring sizes, appliances or furniture. Kitchen layout is indicative only. Please ask Sales Consultant for further information.

Two Bedroom

APARTMENT | 2E.01

OVERALL:

164.61 M²
1770 FT²



LEVEL	APT NO
60.01	65
61.01	64
62.01	63
63.01	62
	61
	60
	59
	58
	57
60.03	56
61.03	55
62.03	54
63.03	53
	52
	51
	50
	49
	48
	47
	46
	45
	44
	43
	42
	41
	40
	39
	38
	37
	36
	35
	34
	33
	32
	31
	30
	29
	28
	27
	26
	25
	24
	23
	22
	21
	20
	19
	18
	17
	16
	15
	14
	13
	12
	11
	10
	09
	08
	07
	06
	05
	04
	03
	02
	01
	M
	G

SIZES	METRIC (M)	IMPERIAL
LIVING / KITCHEN	10.77 x 9.43	35'4" x 30'11"
BEDROOM 1	4.95 x 3.36	16'2" x 11'0"
DRESSING	3.70 x 2.59	12'1" x 8'5"
BEDROOM 2	2.74 x 5.97	8'11" x 19'7"

Dimensions are taken from the points indicated ◀ ▶



Please note that the position of the purge vent doors varies from floor to floor.

Floor plans shown for Deansgate Square are with approximate dimensions only. Each layout size may vary. All measurements may vary within a tolerance of 5% and are to the maximum room dimensions. The dimensions are not intended for use for carpet/flooring sizes, appliances or furniture. Kitchen layout is indicative only. Please ask Sales Consultant for further information.

Two Bedroom

APARTMENT | 2E.02

OVERALL:
164.61 M²
1770 FT²



LEVEL	APT NO
65	
64	
63	
62	
61	
60	
59	
58	
57	
56	
55	
54	
53	
52	
51	
50	
49	
48	
47	
46	
45	
44	
43	
42	
41	
40	
39	
38	
37	
36	
35	
34	
33	
32	
31	
30	
29	
28	
27	
26	
25	
24	
23	
22	
21	
20	
19	
18	
17	
16	
15	
14	
13	
12	
11	
10	
09	
08	
07	
06	
05	
04	
03	
02	
01	
M	
G	

SIZES	METRIC (M)	IMPERIAL
LIVING / KITCHEN	10.77 x 9.43	35'4" x 30'11"
BEDROOM 1	4.95 x 3.36	16'2" x 11'0"
DRESSING	3.70 x 2.59	12'1" x 8'5"
BEDROOM 2	2.74 x 5.97	8'11" x 19'7"

Dimensions are taken from the points indicated ◀ ▶

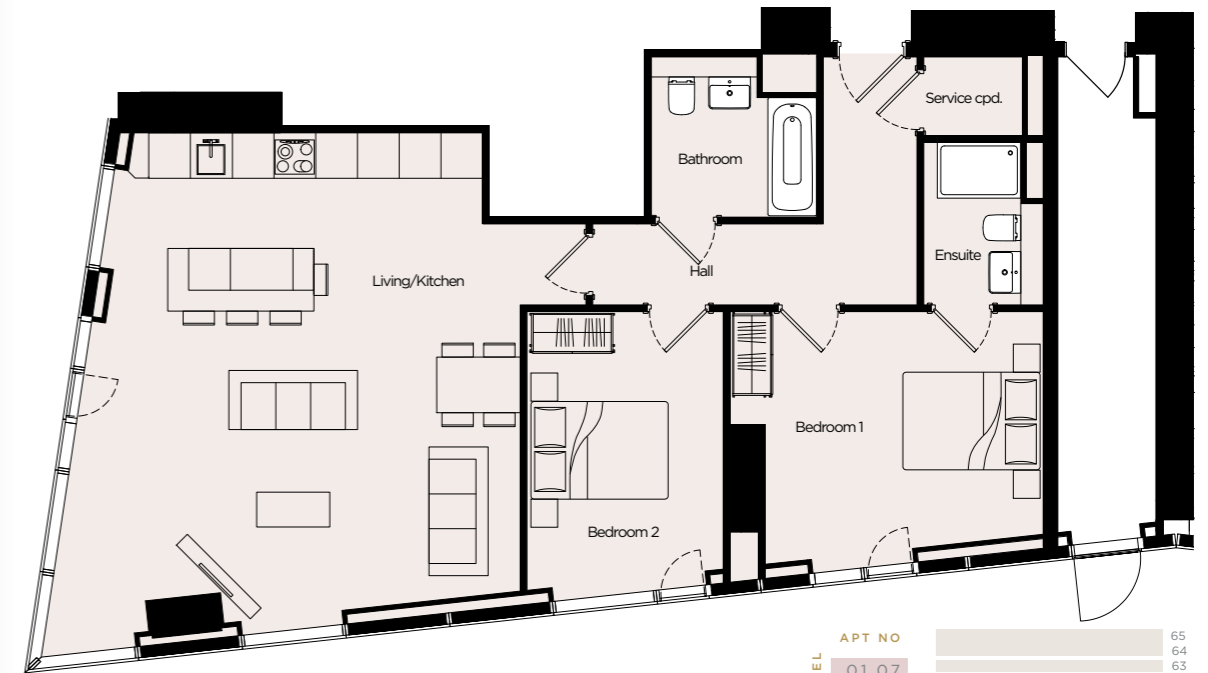


Please note that the position of the purge vent doors varies from floor to floor. Floor plans shown for Deansgate Square are with approximate dimensions only. Each layout size may vary. All measurements may vary within a tolerance of 5% and are to the maximum room dimensions. The dimensions are not intended for use for carpet/flooring sizes, appliances or furniture. Kitchen layout is indicative only. Please ask Sales Consultant for further information.

Two Bedroom

APARTMENT | 2F.01

OVERALL:
94.49 M² | 1016 FT²



SIZES	METRIC (M)	IMPERIAL
LIVING / KITCHEN	7.53 x 6.88	24'8" x 22'6"
BEDROOM	3.63 x 4.60	11'10" x 15'1"
BEDROOM 2	4.01 x 2.82	13'1" x 9'3"

LEVEL	APT NO
65	
64	
63	
62	
61	
60	
59	
58	
57	
56	
55	
54	
53	
52	
51	
50	
49	
48	
47	
46	
45	
44	
43	
42	
41	
40	
39	
38	
37	
36	
35	
34	
33	
32	
31	
30	
29	
28	
27	
26	
25	
24	
23	
22	
21	
20	
19	
18	
17	
16	
15	
14	
13	
12	
11	
10	
09	
08	
07	
06	
05	
04	
03	
02	
01	
M	
G	



Please note that the position of the purge vent doors varies from floor to floor. Floor plans shown for Deansgate Square are with approximate dimensions only. Each layout size may vary. All measurements may vary within a tolerance of 5% and are to the maximum room dimensions. The dimensions are not intended for use for carpet/flooring sizes, appliances or furniture. Kitchen layout is indicative only. Please ask Sales Consultant for further information.

Three Bedroom

APARTMENT | 3A.01

OVERALL:
105.18 M² | 1131 FT²



LEVEL	APT NO
02.07	65
03.07	64
04.07	63
05.07	62
06.07	61
07.07	60
08.07	59
09.07	58
10.07	57
11.07	56
48.07	55
01.03	54
02.03	53
03.03	52
04.03	51
05.03	50
06.03	49
07.03	48
08.03	47
09.03	46
10.03	45
11.03	44
48.03	43
	42
	41
	40
	39
	38
	37
	36
	35
	34
	33
	32
	31
	30
	29
	28
	27
	26
	25
	24
	23
	22
	21
	20
	19
	18
	17
	16
	15
	14
	13
	12
	11
	10
	09
	08
	07
	06
	05
	04
	03
	02
	01
	M
	G

SIZES	METRIC (M)	IMPERIAL
LIVING / KITCHEN	7.10 x 6.38	23'3" x 20'11"
BEDROOM 1	4.61 x 2.75	15'1" x 9'0"
BEDROOM 2	3.64 x 3.26	11'11" x 10'7"
BEDROOM 3	4.00 x 2.84	13'1" x 9'3"

Dimensions are taken from the points indicated ◀ ▶



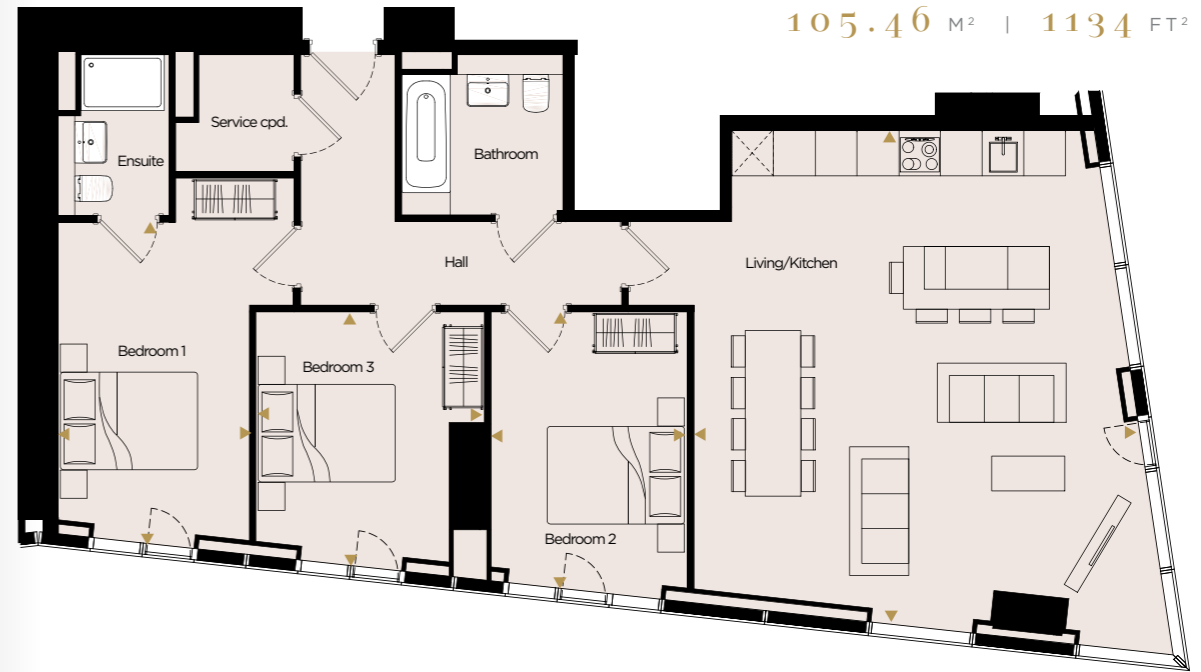
Please note that the position of the purge vent doors varies from floor to floor.

Floor plans shown for Deansgate Square are with approximate dimensions only. Each layout size may vary. All measurements may vary within a tolerance of 5% and are to the maximum room dimensions. The dimensions are not intended for use for carpet/flooring sizes, appliances or furniture. Kitchen layout is indicative only. Please ask Sales Consultant for further information.

Three Bedroom

APARTMENT | 3A.02

OVERALL:
105.46 M² | 1134 FT²



LEVEL	APT NO
MZ.02	65
01.02	64
02.02	63
03.02	62
04.02	61
05.02	60
06.02	59
07.02	58
08.02	57
09.02	56
10.02	55
11.02	54
48.02	53
01.06	52
02.06	51
03.06	50
04.06	49
05.06	48
06.06	47
07.06	46
08.06	45
09.06	44
10.06	43
11.06	42
48.06	41
	40
	39
	38
	37
	36
	35
	34
	33
	32
	31
	30
	29
	28
	27
	26
	25
	24
	23
	22
	21
	20
	19
	18
	17
	16
	15
	14
	13
	12
	11
	10
	09
	08
	07
	06
	05
	04
	03
	02
	01
	M
	G

SIZES	METRIC (M)	IMPERIAL
LIVING / KITCHEN	7.10 x 6.38	23'3" x 20'11"
BEDROOM 1	4.61 x 2.77	15'1" x 9'1"
BEDROOM 2	3.64 x 3.31	11'11" x 10'9"
BEDROOM 3	4.00 x 2.89	13'1" x 9'5"

Dimensions are taken from the points indicated ◀ ▶



Please note that the position of the purge vent doors varies from floor to floor.

Floor plans shown for Deansgate Square are with approximate dimensions only. Each layout size may vary. All measurements may vary within a tolerance of 5% and are to the maximum room dimensions. The dimensions are not intended for use for carpet/flooring sizes, appliances or furniture. Kitchen layout is indicative only. Please ask Sales Consultant for further information.

Three Bedroom

APARTMENT | 3B.01

OVERALL:
165.26 M²
1777 FT²



Three Bedroom

APARTMENT | 3B.02

OVERALL:
165.26 M²
1777 FT²



LEVEL	APT NO
65	45.06
64	55.04
63	
62	
61	
60	
59	
58	
57	
56	
55	
54	
53	
52	
51	
50	
49	
48	
47	
46	
45	
44	
43	
42	
41	
40	
39	
38	
37	
36	
35	
34	
33	
32	
31	
30	
29	
28	
27	
26	
25	
24	
23	
22	
21	
20	
19	
18	
17	
16	
15	
14	
13	
12	
11	
10	
09	
08	
07	
06	
05	
04	
03	
02	
01	
M	
G	

SIZES	METRIC (M)	IMPERIAL
LIVING / KITCHEN	7.12 x 9.30	23'4" x 30'6"
BEDROOM 1	4.94 x 3.36	16'2" x 11'0"
DRESSING	3.72 x 2.65	12'2" x 8'8"
BEDROOM 2	2.84 x 6.04	9'4" x 19'9"
BEDROOM 3	3.46 x 3.58	11'4" x 11'9"

Dimensions are taken from the points indicated ◀ ▶



Please note that the position of the purge vent doors varies from floor to floor. Floor plans shown for Deansgate Square are with approximate dimensions only. Each layout size may vary. All measurements may vary within a tolerance of 5% and are to the maximum room dimensions. The dimensions are not intended for use for carpet/flooring sizes, appliances or furniture. Kitchen layout is indicative only. Please ask Sales Consultant for further information.

LEVEL	APT NO
65	45.05
64	55.03
63	
62	
61	
60	
59	
58	
57	
56	
55	
54	
53	
52	
51	
50	
49	
48	
47	
46	
45	
44	
43	
42	
41	
40	
39	
38	
37	
36	
35	
34	
33	
32	
31	
30	
29	
28	
27	
26	
25	
24	
23	
22	
21	
20	
19	
18	
17	
16	
15	
14	
13	
12	
11	
10	
09	
08	
07	
06	
05	
04	
03	
02	
01	
M	
G	

SIZES	METRIC (M)	IMPERIAL
LIVING / KITCHEN	7.12 x 9.30	23'4" x 30'6"
BEDROOM 1	4.94 x 3.36	16'2" x 11'0"
DRESSING	3.72 x 2.65	12'2" x 8'8"
BEDROOM 2	2.84 x 6.04	9'4" x 19'9"
BEDROOM 3	3.46 x 3.58	11'4" x 11'9"

Dimensions are taken from the points indicated ◀ ▶



Please note that the position of the purge vent doors varies from floor to floor. Floor plans shown for Deansgate Square are with approximate dimensions only. Each layout size may vary. All measurements may vary within a tolerance of 5% and are to the maximum room dimensions. The dimensions are not intended for use for carpet/flooring sizes, appliances or furniture. Kitchen layout is indicative only. Please ask Sales Consultant for further information.

Three Bedroom

APARTMENT | 3F.01

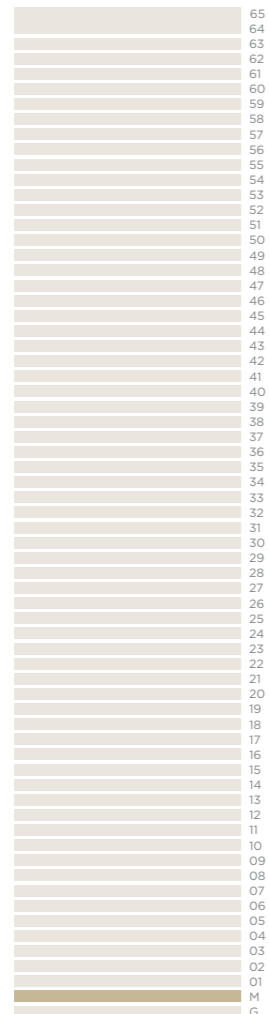
OVERALL:

105.18 M² | 1131 FT²



APT NO
M.Z.03

LEVEL



SIZES	METRIC (M)	IMPERIAL
LIVING / KITCHEN	7.10 x 6.38	23'3" x 20'11"
BEDROOM 1	4.61 x 2.75	15'1" x 9'0"
BEDROOM 2	3.64 x 3.28	11'11" x 10'8"
BEDROOM 3	4.00 x 2.84	13'1" x 9'3"

Dimensions are taken from the points indicated ◀ ▶

OVERALL:



Penthouses

Please note that the position of the purge vent doors varies from floor to floor. Floor plans shown for Deansgate Square are with approximate dimensions only. Each layout size may vary. All measurements may vary within a tolerance of 5% and are to the maximum room dimensions. The dimensions are not intended for use for carpet/flooring sizes, appliances or furniture. Kitchen layout is indicative only. Please ask Sales Consultant for further information.



Penthouse

APARTMENT | PH.01

OVERALL:

285.70 M² | 3072 FT²

SIZES	METRIC (M)	IMPERIAL
LIVING / KITCHEN	10.76 x 15.64	35'3" x 51'4"
STUDY / OFFICE	3.01 x 4.91	9'11" x 16'1"
BEDROOM 1	5.13 x 4.41	16'10" x 14'5"
BEDROOM 2	3.49 x 5.52	11'5" x 18'1"
VIEWING ROOM	2.88 x 3.96	9'5" x 13'0"
BEDROOM 3	3.32 x 6.55	10'11" x 21'5"

Dimensions are taken from the points indicated ◀ ▶



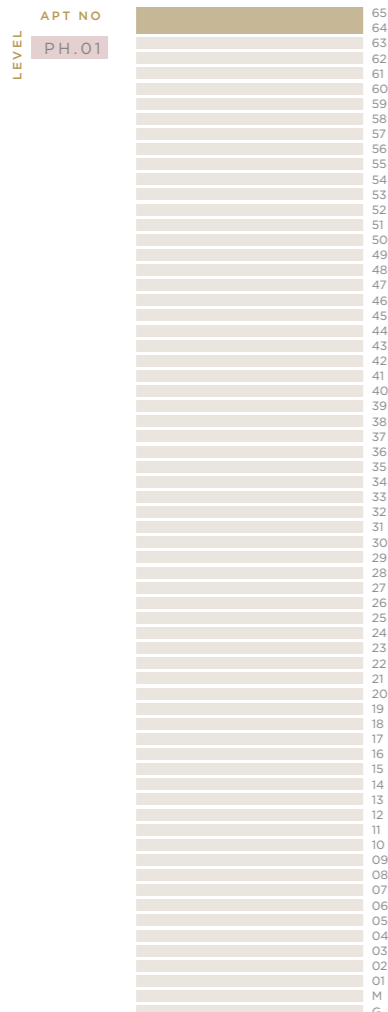
Penthouses do not come dressed, for illustrative purposes only.



FLOOR 64



Please note that the position of the purge vent doors varies from floor to floor. Floor plans shown for Deansgate Square are with approximate dimensions only. Each layout size may vary. All measurements may vary within a tolerance of 5% and are to the maximum room dimensions. The dimensions are not intended for use for carpet/flooring sizes, appliances or furniture. Kitchen layout is indicative only. Please ask Sales Consultant for further information.



Please note that the position of the purge vent doors varies from floor to floor. Floor plans shown for Deansgate Square are with approximate dimensions only. Each layout size may vary. All measurements may vary within a tolerance of 5% and are to the maximum room dimensions. The dimensions are not intended for use for carpet/flooring sizes, appliances or furniture. Kitchen layout is indicative only. Please ask Sales Consultant for further information.

Penthouse

APARTMENT | PH.02

OVERALL:

286.35 M² | 3079 FT²

SIZES	METRIC (M)	IMPERIAL
LIVING / KITCHEN	10.76 x 15.64	35'3" x 51'4"
STUDY / OFFICE	3.01 x 4.91	9'11" x 16'1"
BEDROOM 1	5.13 x 4.41	16'10" x 14'5"
BEDROOM 2	3.49 x 5.52	11'5" x 18'1"
VIEWING ROOM	2.88 x 3.96	9'5" x 13'0"
BEDROOM 3	3.32 x 6.55	10'11" x 21'5"

Dimensions are taken from the points indicated ◀ ▶



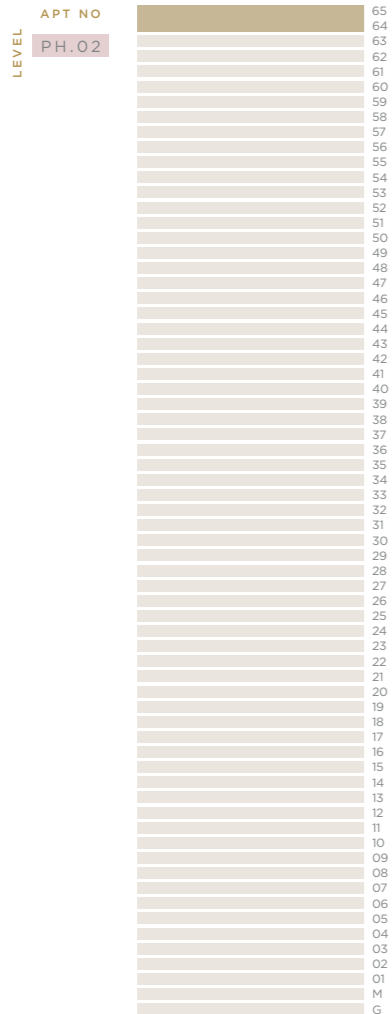
Penthouses do not come dressed, for illustrative purposes only.



FLOOR 65



FLOOR 64



Please note that the position of the purge vent doors varies from floor to floor. Floor plans shown for Deansgate Square are with approximate dimensions only. Each layout size may vary. All measurements may vary within a tolerance of 5% and are to the maximum room dimensions. The dimensions are not intended for use for carpet/flooring sizes, appliances or furniture. Kitchen layout is indicative only. Please ask Sales Consultant for further information.

Please note that the position of the purge vent doors varies from floor to floor. Floor plans shown for Deansgate Square are with approximate dimensions only. Each layout size may vary. All measurements may vary within a tolerance of 5% and are to the maximum room dimensions. The dimensions are not intended for use for carpet/flooring sizes, appliances or furniture. Kitchen layout is indicative only. Please ask Sales Consultant for further information.

Penthouse

APARTMENT | PH.03

OVERALL:

286.44 M² | 3080 FT²

SIZES	METRIC (M)	IMPERIAL
LIVING / KITCHEN	10.76 x 15.64	35'3" x 51'4"
STUDY / OFFICE	3.01 x 4.91	9'11" x 16'1"
BEDROOM 1	5.13 x 4.41	16'10" x 14'5"
BEDROOM 2	3.49 x 5.52	11'5" x 18'1"
VIEWING ROOM	2.88 x 3.96	9'5" x 13'0"
BEDROOM 3	3.32 x 6.55	10'11" x 21'5"

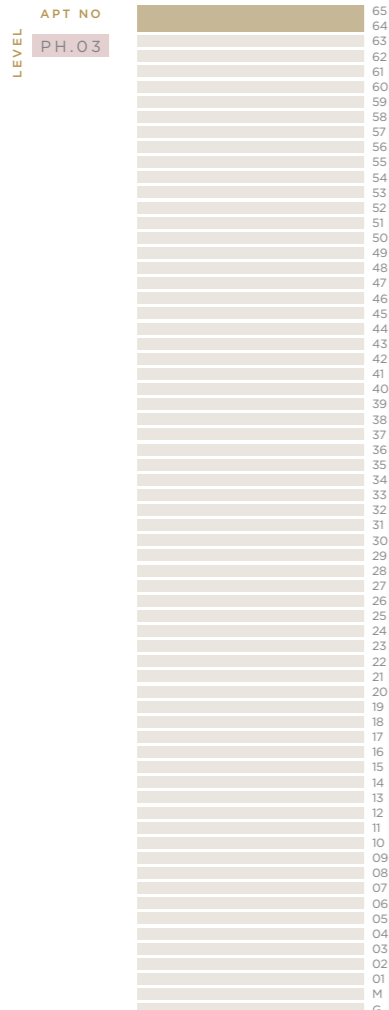
Dimensions are taken from the points indicated ◀ ▶



Penthouses do not come dressed, for illustrative purposes only.



Please note that the position of the purge vent doors varies from floor to floor. Floor plans shown for Deansgate Square are with approximate dimensions only. Each layout size may vary. All measurements may vary within a tolerance of 5% and are to the maximum room dimensions. The dimensions are not intended for use for carpet/flooring sizes, appliances or furniture. Kitchen layout is indicative only. Please ask Sales Consultant for further information.



Please note that the position of the purge vent doors varies from floor to floor. Floor plans shown for Deansgate Square are with approximate dimensions only. Each layout size may vary. All measurements may vary within a tolerance of 5% and are to the maximum room dimensions. The dimensions are not intended for use for carpet/flooring sizes, appliances or furniture. Kitchen layout is indicative only. Please ask Sales Consultant for further information.

Penthouse

APARTMENT | PH.04

OVERALL:

295.74 M² | 3180 FT²

SIZES	METRIC (M)	IMPERIAL
LIVING / KITCHEN	10.76 x 15.64	35'3" x 51'4"
STUDY / OFFICE	3.01 x 4.91	9'11" x 16'1"
BEDROOM 1	5.13 x 4.41	16'10" x 14'5"
BEDROOM 2	3.49 x 5.52	11'5" x 18'1"
VIEWING ROOM	2.88 x 3.96	9'5" x 13'0"
BEDROOM 3	3.32 x 6.55	10'11" x 21'5"

Dimensions are taken from the points indicated ◀ ▶



Penthouses do not come dressed, for illustrative purposes only.

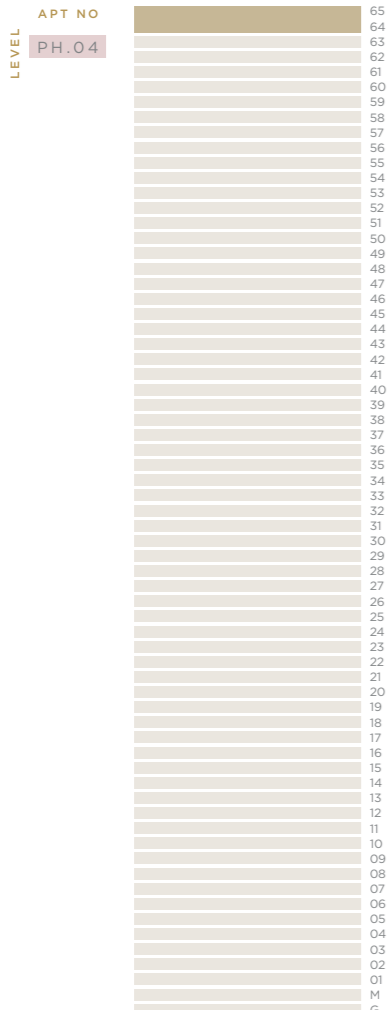
FLOOR 65



FLOOR 64



Please note that the position of the purge vent doors varies from floor to floor. Floor plans shown for Deansgate Square are with approximate dimensions only. Each layout size may vary. All measurements may vary within a tolerance of 5% and are to the maximum room dimensions. The dimensions are not intended for use for carpet/flooring sizes, appliances or furniture. Kitchen layout is indicative only. Please ask Sales Consultant for further information.



Please note that the position of the purge vent doors varies from floor to floor. Floor plans shown for Deansgate Square are with approximate dimensions only. Each layout size may vary. All measurements may vary within a tolerance of 5% and are to the maximum room dimensions. The dimensions are not intended for use for carpet/flooring sizes, appliances or furniture. Kitchen layout is indicative only. Please ask Sales Consultant for further information.

RENAKER

THE NORTH WEST'S LEADING PROPERTY DEVELOPER

IN COMING TOGETHER, ITS BUSINESS LEADERS DRAW UPON A UNIQUE BLEND OF COMPLEMENTARY SKILLS GAINED FROM DECADES OF EXPERIENCE WITHIN LEADING INDUSTRY ORGANISATIONS.

Renaker is now firmly established as the North West's leading property developer with a proven track record in design, build and delivery with more than 4000 new homes currently under construction.

Renaker has a unique and refreshing approach, operating with honesty and integrity in a straightforward manner which receives a positive response from all stakeholders.

We firmly believe that for the business to be successful, we must operate in a forward-thinking manner, be responsive to change and to be able to act quickly. Throughout the business, we adopt a "can do" attitude delivering sustainable new communities in an enthusiastic and efficient manner.

Our vision is to transform the urban landscape, unlocking potential and delivering quality schemes which encourage a sense of community and are attuned to the needs of the end user.

Sustainability is always a key consideration and, from the early stages of the planning process, we ensure that longevity is built in: meeting not just the needs of today but the demands of tomorrow. We deliver what we promise.

RENAKER



Please note that the position of the purge vent doors varies from floor to floor. Floor plans shown for Deansgate Square are with approximate dimensions only. Each layout size may vary. All measurements may vary within a tolerance of 5% and are to the maximum room dimensions. The dimensions are not intended for use for carpet/flooring sizes, appliances or furniture. Kitchen layout is indicative only. Please ask Sales Consultant for further information.



MARKETING SUITE:

Great Jackson Street, Manchester M15 4PA

CALL: 0161 711 0605

(+44 161 711 0605)

EMAIL: hello@deansgatesquare.co.uk

OPEN: 7 days a week 10am - 5pm

HOW TO FIND THE MARKETING SUITE:

From Manchester head out of the city on Deansgate which will then turn into the A56 Chester Road. Go past Atlas Bar on your left and The Knott on your right, before taking your second left onto Great Jackson Street. The marketing suite is situated 150 yards down the road on the right.

From the A57(M) Mancunian Way (North) come off at the A56 Altrincham/Trafford Park junction. Go around the roundabout and take the third exit - as if getting back onto the Ring Road. Immediately stay in the left hand lane and take the second left onto Garwood Street. Take a left onto Great Jackson Street and follow the road until you see the marketing suite on your left.

From Princess Road head north into the city on Medlock Street. With Home on your right hand side, turn left onto City Road East. Follow this road round for approx 400 yards, and you will find the marketing suite on your left hand side.

Deansgate

S Q U A R E

A N E W L E V E L



The information in this document is indicative and is intended to act as a guide only as to the finished product. Accordingly due to Renaker's policy of continuous improvement the finished product may vary from the information provided. These particulars should not be relied upon as statements of fact or representations. This information does not constitute a contract or warranty. Applicants are advised to contact Renaker to ascertain the availability of any particular property. All computer images are indicative only.

Floor plans shown for Deansgate Square are with approximate dimensions only. Each layout size may vary. All measurements may vary within a tolerance of 5% and are to the maximum room dimensions. The dimensions are not intended for use for carpet/flooring sizes, appliances or furniture. Kitchen layout is indicative only. Please ask Sales Consultant for further information. August 2021.